



BL7SDI 7" LCD TFT Widescreen Monitor

Boland Communications 16 Rancho Circle Lake Forest, Ca. 92630 USA – (800) 918-9090 – (949) 465-9911
www.bolandcom.com



Features

- 1280x800 Resolution IPS LCD Screen
- HDMI Loop Through
- HDMI in & out
- YPBPR in & out
- Video in & out
- 3G-SDI in & out (CL76SDI Model)
- Check Field (Mono / R / G / B)
- Peaking (Red outline)
- False Color
(Adjustable under luminance & over luminance warning)
- Clip Guides
(Adjustable Threshold)
- Aspect Ratio (FULL / 16:9 / 4:3)
- DSLR Scaling (FULL Screen / 16:9 / 3:2 / None)
- User-Defined Image Ratio
(H-Start / H-Size / V-Star / V-Size)



- Tally System
- Movable Pixel-To-Pixel
(Left / Right / Up / Down Movable)
- Side-By-Side Freeze Frame
(Windows 1: 16:9 Mode / Windows 2: 4:3 Mode)
- Guides (4:3 & 16:9 Framing Safe Area)
- 5 User-Defined Group
(Automatically records parameters adjustment, Adapted to a variety of shooting situations)
- H/V Delay (H Delay / V Delay / H&V Delay)
- Under Scan
- 4 kinds DV Battery Plate for choice:
 - 1) NWNP-F960 (SONY "L" Type Series) (Standard)
 - 2) NWLP-E6 (Canon 5D)
 - 3) NWD54s (Panasonic "D54" Series)
 - 4) NWBP945 (Canon "900" Series)



Model	CL76SDI	CL76HO-X
Input	3G-SDI x 1	NONE
	HDMI x 1	
	YPBPR (Component) x 1	
	VIDEO (Composite) x 1	
Output	3G-SDI x 1	NONE
	HDMI x 1	
	YPBPR (Component) x 1	
	VIDEO (Composite) x 1	
Screen Size	Diagonal 7 inch TFT LCD	
Resolution	1280 x 800	
Backlight	LED	
Number of colors	262K	
Active Area (mm)	150.72(H) x 94.2(V)	
Pixel Pitch (mm)	0.11775(H) x 0.11775(V)	
Brightness	400 cd/m2	
Contrast	800:1	
View Angle	85°(L) / 85°(R) /85°(U) /85°(D)	
Operating Volts	DC6-24V (XLR DC Connection)	
Power consumption	8w	
Operating Temp	0 to +50?	
Storage Temp	-20 to +60?	
Dimension (mm)	187.5(H) x 142(W) x 41(H)	
Weight (g)	550g	

Specifications		3G SDI	1920x1080p @50 / 50.94 / 60Hz
HD SDI	Signal Support		1035x720p @ 59.94 / 60 Hz
			1280x720p @ 50 / 59.94 / 60 Hz
SD SDI	Signal Support		1920x1080i @ 50 / 59.94 / 60 Hz
			1920x1080psf @ 23.98 / 24, 25 / 29.97 / 30 Hz
			1920x1080p @ 23.97 / 24 / 25 / 29.94 / 30 Hz
HDMI	Signal Support		720x480i @ 60Hz
			720x576i @ 50Hz
YPBPR	Signal Support		1920x1080p @50 / 50.94 / 60Hz
			720x480i & 720x480p @ 59.94 / 60 Hz
			720x576i & 720x576p @ 50 Hz
			1280x720p @ 50 / 59.94 / 60 Hz
VIDEO	Signal Support		1920x1080i @ 50 / 59.94 / 60 Hz
			1920x1080psf @ 24 / 25 / 29.97 / 30 Hz
			1920x1080p @ 23.97 / 24 / 25 / 29.94 / 30 / 50 / 59.94 / 60 Hz
			720x480i @ 60 Hz
			720x576i @ 50 Hz
			1280x720p @ 23.97 / 24 / 25 / 29.94 / 30 Hz
			1280x720p @ 50 / 59.94 / 60 Hz
			1920x1080i @ 50 / 59.94 / 60 Hz
			1920x1080psf @ 24 / 25 / 29.97 / 30 Hz
			1920x1080p @ 23.97 / 24 / 25 / 29.94 / 30 Hz
			1920x1080p @50 / 59.94 / 60 Hz
			NTSC-M, NTSC-J, NTSC 4.43
			PAL B/G H I D, PAL M, PAL N
			SECAM



.....1280 x 800 Resolution.....



.....1024 x 600 Resolution.....

• With 1280 x 800 Resolution LCD Screen,It can display images as vivid as your imagination. The screen where you see is remarkably vibrant, detailed, and sharp.



• With IPS LCD Display Technology, The view angle is 170°(H) / 170°(V) .So enjoy the display as every angle.

Peaking Function

The operator adjusts the focus control until the red outlines on the desired area are clear, indicating optimal focus. For the best results, be sure the

subject is properly exposed. Enjoy taking your photos!



Peaking Function OFF
Normal



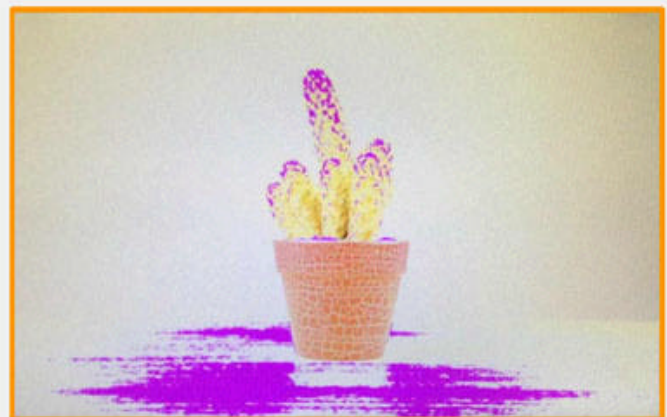
Peaking Function ON
(Red outline) (Original photo will be black&white)

Clip Guide

This offers adjustable upper Clip Guide Levels to accurately display overexposed images in any shooting condition. The operator simply assigns the upper IRE to their Preference and any exposure over the set IRE limit will flash in a vivid purple, indicating only the over exposed area.



Over Exposure



Over Exposure with Clip Guides

False Color

The false color feature utilizes a full spectrum of assigned color indicators, ensuring flawless shot exposure. As the camera Iris is adjusted, the subject of the images will change color basic on specific brightness values indicating optimal exposure. See included chart for color assignments.



Correct Exposure



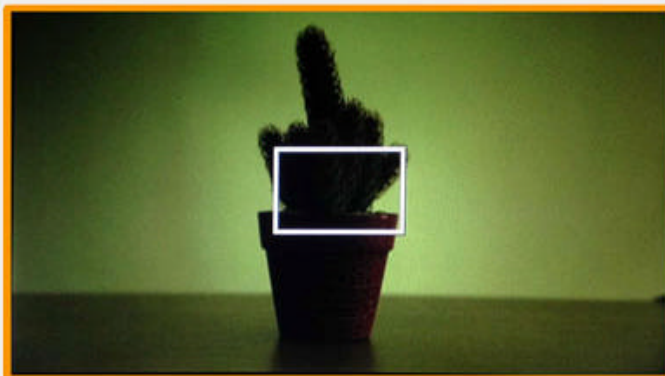
Correct Exposure with False Color Filter



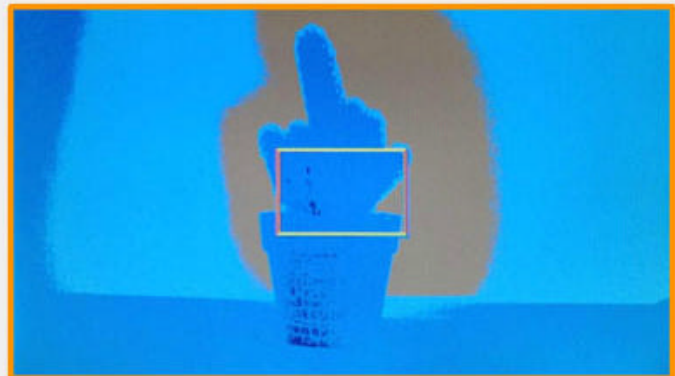
Over Exposure



Over Exposure with False Color Filter



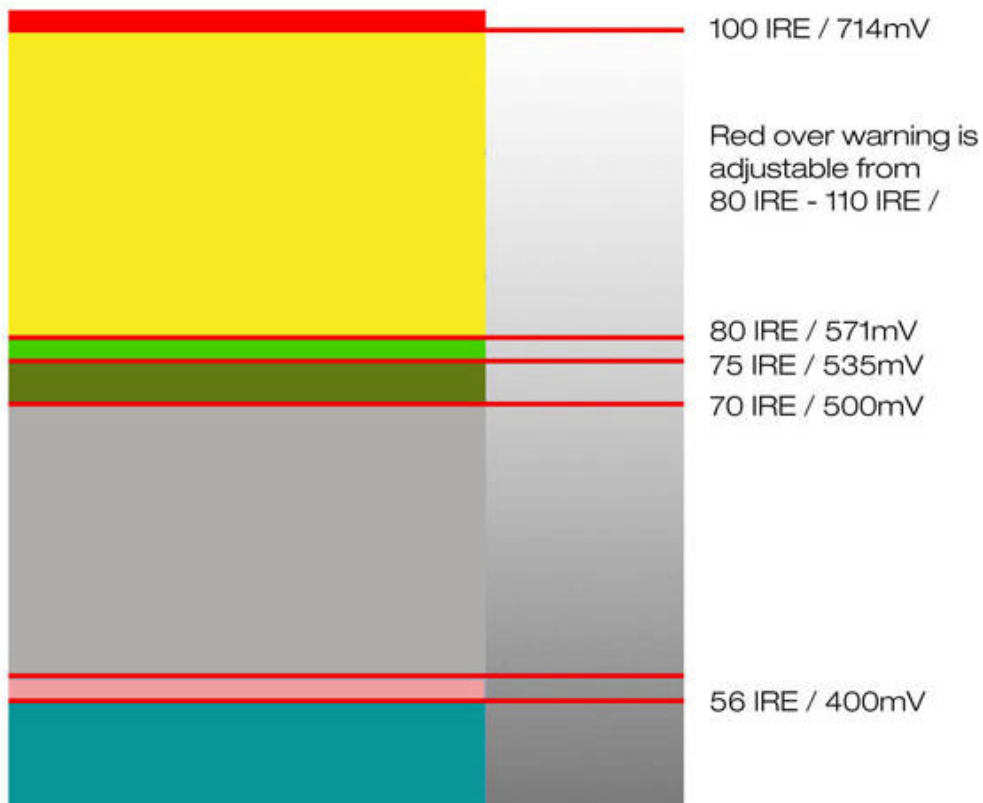
Under Exposure



Under Exposure with False Color Filter

False Color Key

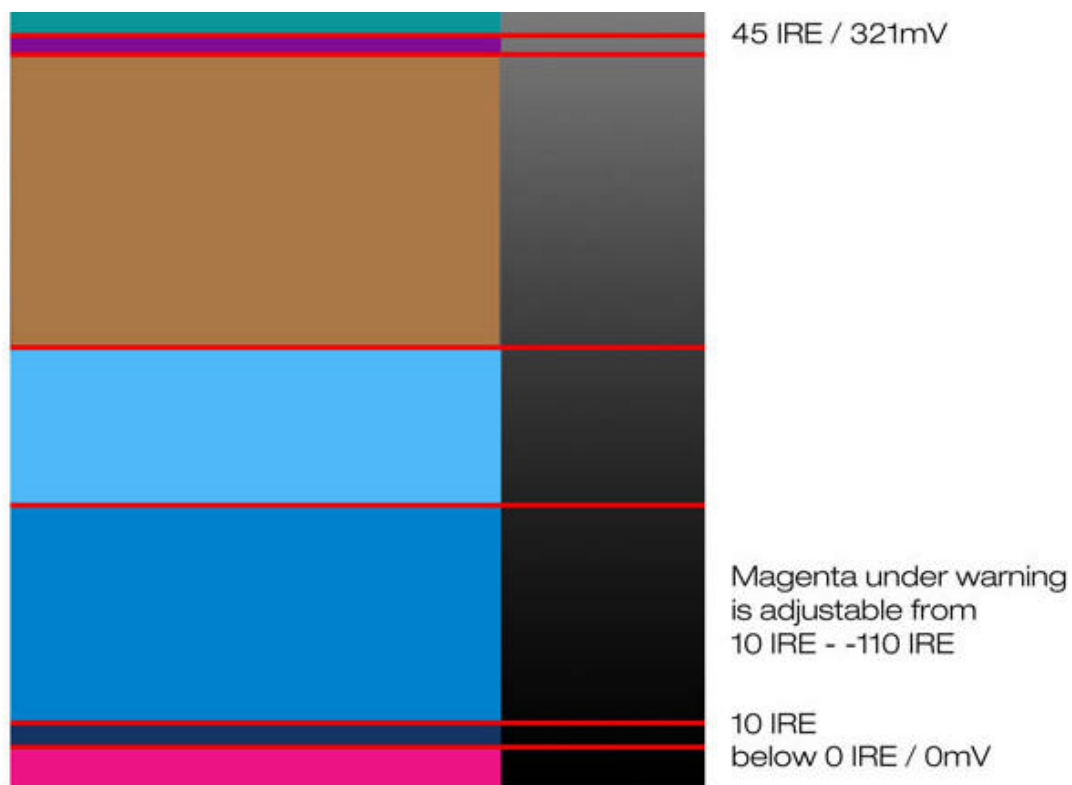
Use the adjustable warning to prevent over exposures in your video



Use the 70 - 80 IRE indicators to assist in setting exposure for white objects.

Use the 56 IRE indicator to assist in setting exposure for skin tones

Use the 45 IRE indicator in assist in setting exposures when using a gray card



Use the adjustable warning to prevent under exposures in your video

Tally System

Front: Indicator light (green or red or yellow) will work On the edge of LCD display

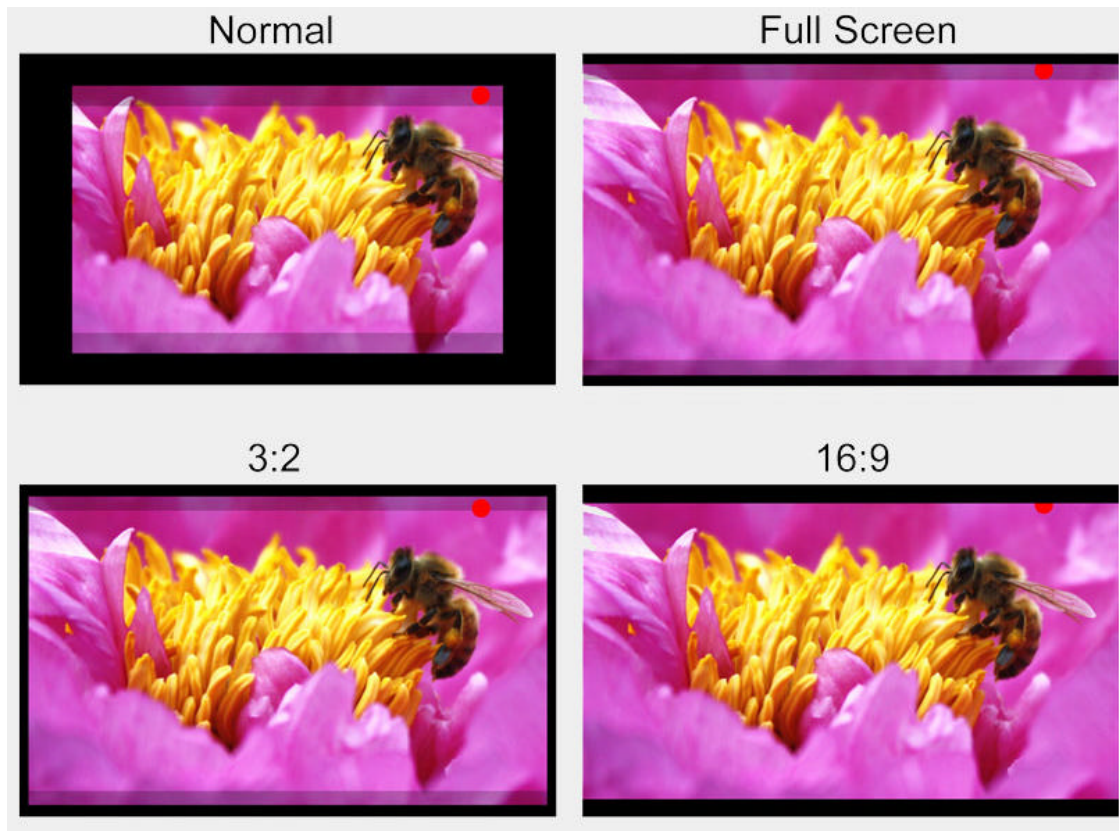
Rear: Indicator light (green or red or yellow) will work at the same time on the rear side.



DSLR Scaling Function

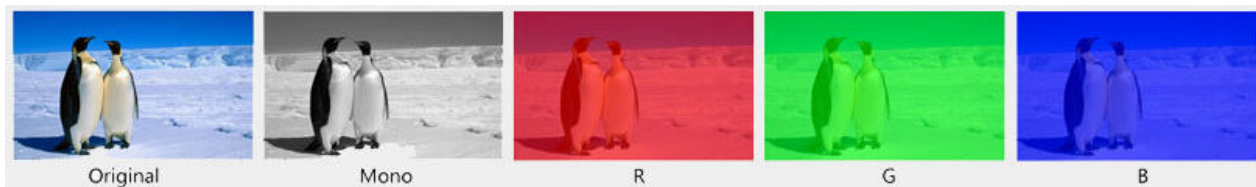
DSLR Ratio Adjustment allows user to scale video that does not completely fill the monitors screen when connected via HDMI "Record" mode

on certain Canon DSLR. This feature allows user to scale their DSLR video output,fill the screen,and eliminate black pillar bars with a variety of options to choose from. There has 4 kinds mode for choosing : NORMAL, 3:2, 16:9, and FULL SCREEN.



Check Field

4 Kinds Mode : Red,Green,Blue,Mono.



LUMA UNDER WARN & LUMA OVER WARN

Adjustable Under Exposure and Over Exposed Warning feature gives the operator full control of the False Color brightness values.By setting the preferred IRE exposure limits,the operator is warned when the image exposure is exceeding or falling under the preset IRE limit,providing customizable,full image exposure control.

Windows 1 & Windows 2

The function displays a side by side comparison of the incoming video signal.Pushing the F1/2 button one time will enter the mode.Each time the F1/2 button is pushed it will freeze the current frame on the right hand side of the display while the left continues to display the live signal.Pressing the exit button will exit the windows mode.Use Windows 1 for 16:9 signals and Windows 2 for 4:3 signals.

Pixel To Pixel

The LCD Panel in this display has a native display of 1024x600 pixels. A signal of any other resolution is scaled to fit this native resolution. There maybe time when it is desired to view the incoming signal without scaling. Enabling Pixel To Pixel Mode turns off the scaling and display a 1024x600 pixel window of the original image. Each pixel of the panel displays one pixel of the original image. The user may use arrow buttons(buttons 2-5) on the monitor face to move the window left,right,up,and down to see the desired portion of the image.

MENU SETUP

There has 5 USER MODE for choosing:USER1,USER2,USER3,USER4,USER5. In any USER MODE,it will record every changes of all the items (as Page 4 show).The user setting will remain in memory indefinitely and can be erased by using the reset option in the main menu.

Main Menu

Items	Default	Range	
GUIDES	GUIDES FULL	OFF	[90% / 80% / 4:3 / OFF]
	GUIDES 16:9	OFF	[90% / 80% / 4:3 / OFF]
	GUIDES 4:3	OFF	[90% / 80% / OFF]
	G BACKGROUND	NORMAL	[NORMAL / HALF / BLACK]
	CROSSHAIR	OFF	[OFF / ON]
	RETURN		
VIDEO CONFIG	BRIGHTNESS	50	[0-100]
	CONTRAST	50	[0-100]
	CHROMA	50	[0-100]
	SHARPNESS	10	[0-100]
	TINT	50	[0-100]
	COLOR TEMP	?	[5600K / 6500K / 9300K / MANUAL] * MANUAL: R:128 / G:128 / B:128
	RETURN		
SYSTEM CONFIG	OSD-LANGUAGE	ENGLISH	[ENGLISH / CHINESE / JAPANESE]
	OSD-DURATION	15	[5-60]

	MENU SETUP	USER1	[USER1 / USER2 / USER3 / USER4 / USER5]
	BACKLIGHT	80	[0-100]
	DSLR AUTOSCALING	OFF	[DSLR FULL / DSLR 16:9 / DSLR 3:2 / OFF]
	SYSTEM RESET	?	
	RETURN		
FUNCTION SETUP	LUMA UNDER WARN	-1	[-10 ~ 105]
	LUMA OVER WARN	101	[85 ~ 110]
	FUNCTION 1	CHECK FIELD	CHECK FIELD / PIXEL / WINDOWS 1 / WINDOWS 2 HV DELAY / GUIDES / CROSS HAIR / PEAKING FALSE COLOR / CLIP GUIDES / UNDERSCAN DSLR SCALING
	FUNCTION 2	PEAKING	
	FUNCTION 3	FALSE COLOR	
	FUNCTION 4	PIXEL	
	RETURN		
EXIT			

* User-defined image ratio OSD

Use "Aspect/EXIT" button to select "USER" Mode, then press "MENU" Button for 3-5 seconds, you will enter the OSD as below:

Mode	Default	Range
H-START	0	[-186 ~ +270]
H-SIZE	0	[-270 ~ +270]
V-START	0	[-24 ~ +200]
V-SIZE	0	[-200 ~ +48]
EXIT		

* LUMA UNDER WARN & LUMA OVER WARN just can be used when False Color or Clip Guides function run.

* R,G,B Just can be adjusted when color Temp is MANUAL.



Monitor



Cloth Sun Shade



Protect Bag



Power Adapter



Shoe Mount



Battery Plate

Optional Accessories



NWD54s



NWBP945



NWLP-E6



Anton Type



V-Mount Type

- * NWLP-E6 Type Battery Plate: For Canon 5D Batteries
- * NWD54s Type Battery Plate: For Panasonic D54 Series Batteries
- * NWBP945 Type Battery Plate: For Canon "900" Series Batteries
- * NWNP-F960 Type Battery Plate: For Sony "L" Type Series Batteries
- * Anton Type Battery Plate
- * V-mount Type Battery Plate