
DMC DMT-DD

User's Guide

DMC Co., Ltd.

Driver Version: v4.3.11.19, Product Version: v2.05.11.21 (11-30-18)

- Note:** DMT-DD software is a drivers set for **boland** PCap screens connected by Serial (RS-232) or USB. There are two driver install packages, courtesy DMC, on the **boland** website* for:
Win XP, 7, 8, and 8.1 (11-30-18)
Win 10** (11-30-18)
- Note:** References, in this document, are for **boland** PCap monitors which use the **DUS controller**.
- Note:** Certain default settings are required for XP operation. See pages 26 and 43.
- Note:** For Serial operation, preset your intended Com Port to 57.6 kbs, 8N1. See pinout below.
- Note:** After all installation is complete, run the noise-cancelling routine, TPOffset, on page 40.
- Note:** **boland** monitors use a straight-thru, pin for pin, RS-232 cable, e.g., pc's pin 2 goes to monitor's pin 2, that is, a null-modem connection is not required. (A null modem DB9 M-F Null Modem adaptor plug can be used to fix reversals).

*http://www.bolandcom.com/downloads, Touchscreens, PCap_DMC

**For Win 10 computers, an MS driver update is sometimes required (FTDI driver for COM port). 110919mb

The software described in this document is provided based on the Software License Agreement, and can be used only when you agree with the contents of the agreement.

Copyright:

Copyright © 2018 DMC Co., Ltd., Tokyo, Japan

Notes inside, pertaining to particular installations, added by Boland Communications, Lake Forest, CA USA, 2020

About the trademarks:

Microsoft and Windows are the registered trademarks of Microsoft Corporation in the United States.

--List of contents--

1. Structure and Outline	3
1.1. Structure	3
1.2. Outline.....	3
1.3. Remarks.....	3
2. System Requirements.....	4
2.1. System Configuration.....	4
2.2. Install Prerequisites.....	4
2.3. Applied controllers.....	4
2.4. Remarks.....	5
3. Install.....	6
4. Uninstall.....	11
5. Start-up of Touch Screen Driver Setting Tool	13
6. Setup Procedures of Touch Screen Driver.....	14
6.1. Procedures to operate the touch screen driver	14
7. Device Addition.....	16
7.1. Touch Panel Device List.....	16
7.2. Install.....	18
7.3. Uninstall	23
7.4. Disablement of COM Port Search.....	25
8. Basic Setting.....	26
8.1. Software Setting.....	27
8.2. Touch Input Setting	32
8.3. Edge Setting	34
8.4. Touch Sound.....	35
8.5. Right-click Setting	39
8.6. Hardware Setting	40
8.7. Hardware Information.....	42
8.8. Configuration File.....	43
9. Monitor Setting.....	45
10. Touch Setting.....	48
10.1. Touch Screen Configuration.....	50
11. Mouse Setting.....	51
12. Tool Setting.....	52

1. Structure and Outline

1.1. Structure

DMT-DD consists of

- Setting Tool (Touch Screen Properties)
- Configuration Files
- Driver

1.2. Outline

System Outline

DMT-DD provides the functions necessary to operate a touch screen monitor.

The functions are

- Install and Uninstall of the touch screen driver
- Configuration of the touch screen driver
- Monitoring of the touch screen driver

All the settings can be configured with this tool.

1.3. Remarks

- (1) The DMT-DD is for our touch-panel controller series. It is not intended for operation with the other touch-panel controllers and the products similar to them.
- (2) For how to use DMT-DD, read this guide well. Do not use any other methods with the DMT-DD software.
- (3) DMT-DD is not intended for the model of computer and operating system other than the supported ones.
- (4) Avoid using this software with other mouse emulation software or with similar functions installed. In such a problematic environment the software may malfunction.
- (5) When the previous version is already installed, please be sure to install this software after uninstalling it. If overwrite installation is carried out, the software may malfunction.
- (6) DMC will not be liable for any loss caused by the use/install of this software. Please back up your system beforehand.

2. System Requirements

2.1. System Configuration

(1) OS

Windows XP/7/8/8.1/10, 32bit / 64bit, in Home, or greater, editions

(Note) System-builder version of Windows 8/8.1/10 is not supported.

Installer files are different for Windows10 and other operating systems.

(2) Connection Interface

USB / Serial ([Serial](#), on [boland Monitors](#), is RS-232)

(3) Monitor

Multi-display supported.

(Note) If TSC controller is to be used in a multi-display environment, the OS needs to be Windows 7 or greater versions.

2.2. Install Prerequisites

(1) Software

OS	Required Software
Windows XP / 7 / 8 / 8.1	Microsoft .Net Framework 3.5
Windows 10	Microsoft .Net Framework 4.6

(2) Hard Disk

Approximately 10MB of free space + data file capacity.

The install destination will be as below.

32bit: [System drive] \ Program Files \ DMT-DD

64bit: [System drive] \ Program Files(x86) \ DMT-DD

2.3. Applied controllers

Controller	VID / PID	Connection
DUS series (FW-Ver7)	0x0AFA / 0x07D2	USB / Serial
DUS series (FW-Ver8)	0x0AFA / 0x07D3	
DUSx100 series	0x0AFA / 0x07D5	
MTR series	0x0AFA / 0x03EC 0x0AFA / 0x03ED 0x0AFA / 0x03EE 0x0AFA / 0x03EF	
TSC series	0x0AFA / 0x03E8	

Refer to DMC website or contact us for details of each controller.

<http://www.dmccoltd.com/english/>

2.4. Remarks

- (1) Touch input on multi-monitor under Windows7 environment requires the graphics driver to be WDDM1.0 or greater version and support DirectX9.
- (2) Operation will be single-touch mouse input under Windows XP.
- (3) [Limited Touch Support] will be indicated in the [System] screen under an Windows8/8.1/10 environment.

3. Install

Do not connect a touchscreen monitor via USB cable during this install phase.

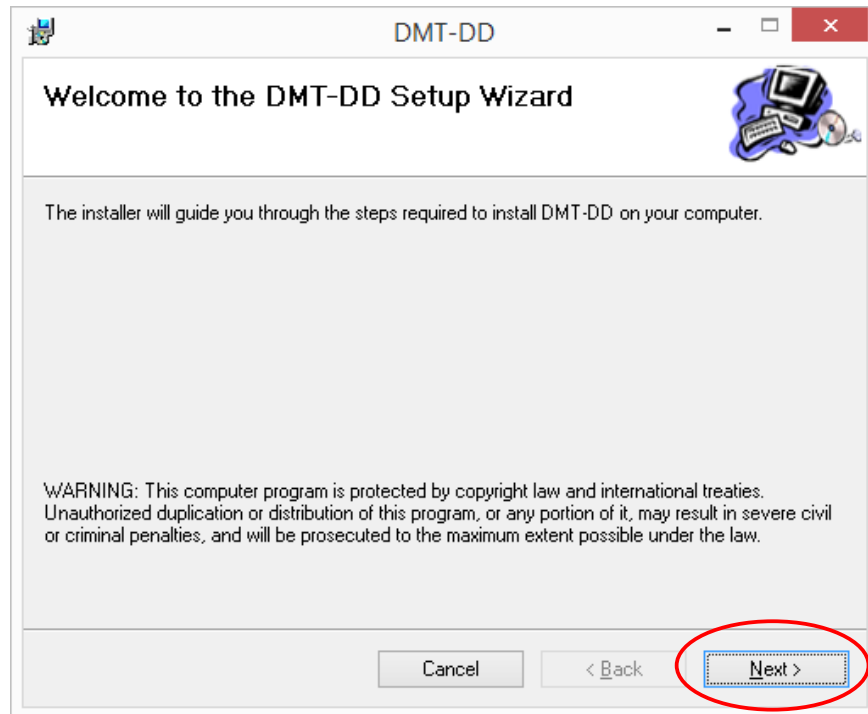
Double-click either* **[DMT-DDSetup.msi]** or **[DMT-DDSetup_ms.msi]**.

*The file to be executed differs according to the operating system:

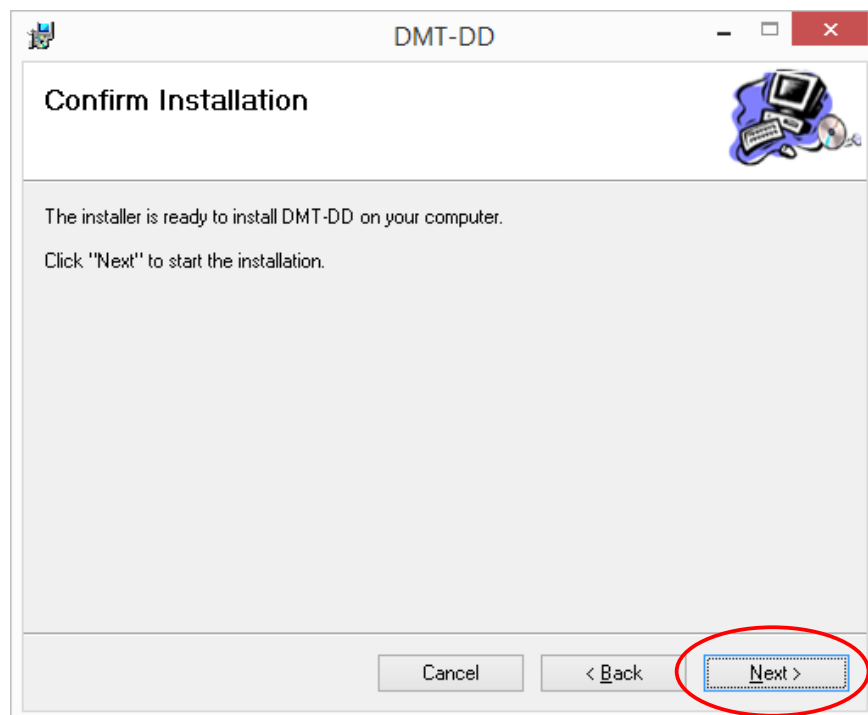
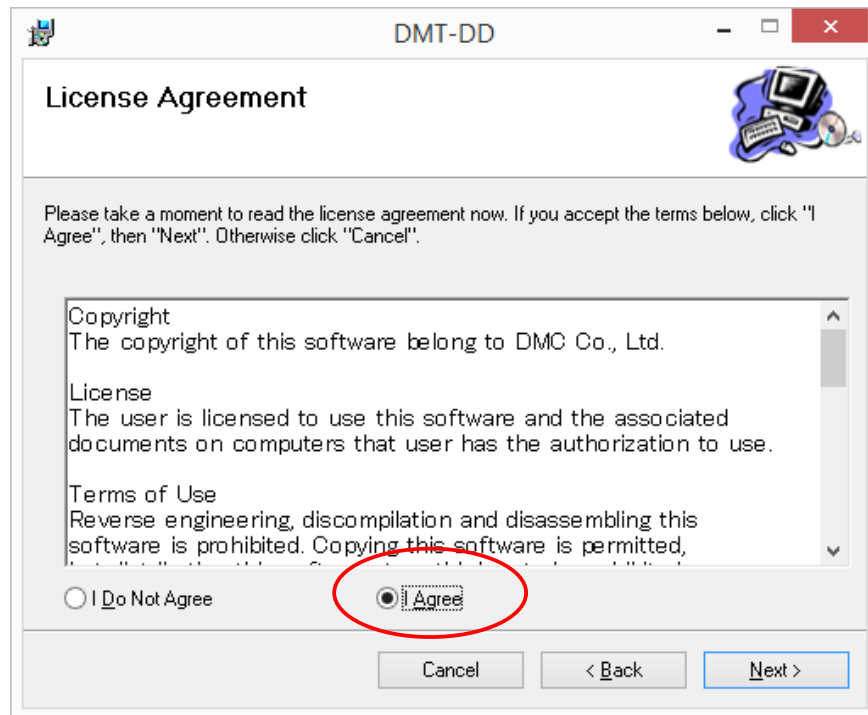
Double-click **[DMT-DDSetup.msi]** if the OS is WindowsXP/7/8/8.1.

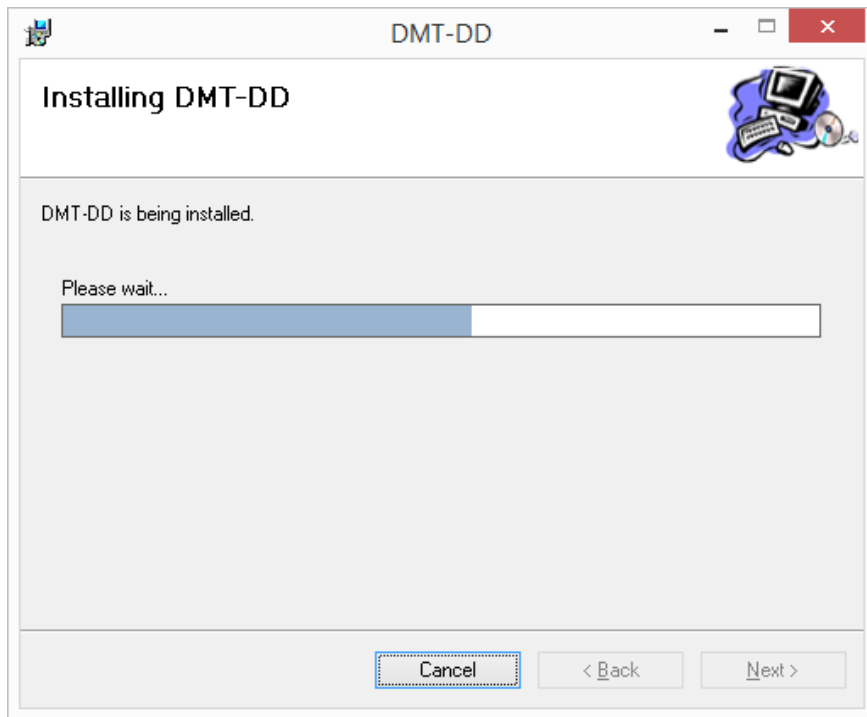
Double-click **[DMT-DDSetup_ms.msi]** if the OS is Windows10.

Setup wizard will start. Click [Next] for install.

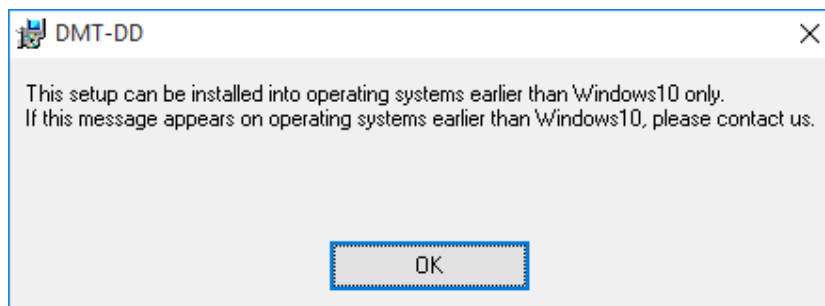
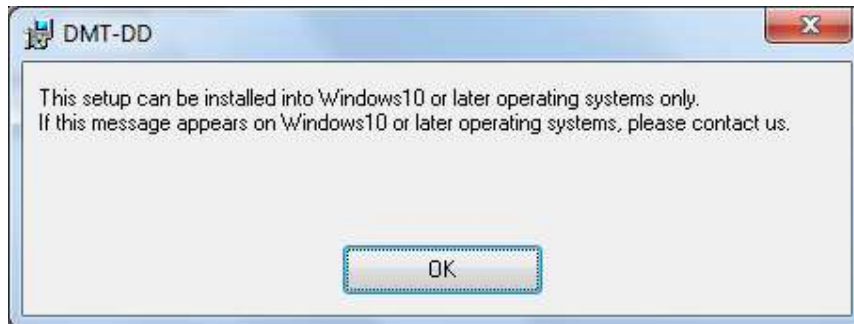


Read the License Agreement and select [I Agree], then click [Next].



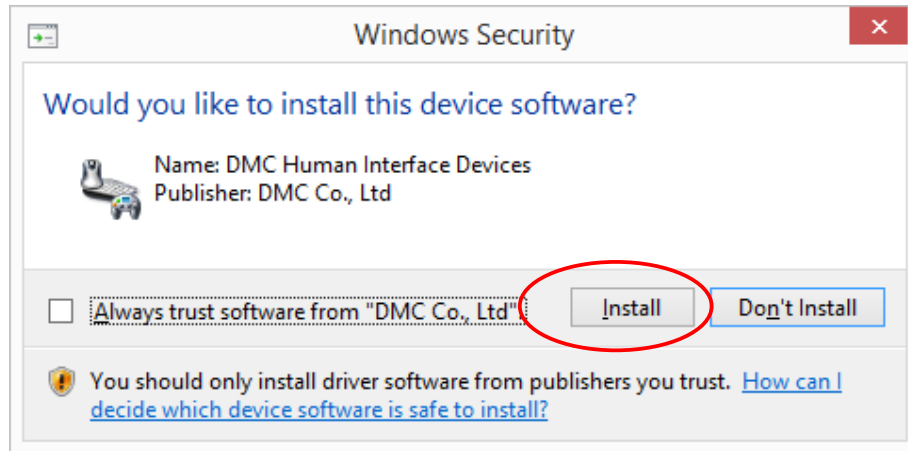


(Note) If an installer that does not support the operating system is executed, the following messages will appear, and the install will not be completed. Try again and make sure to execute the installer that supports the operating system.



A dialog like one below may appear several times during the installation.

Windows 7 or up OS:

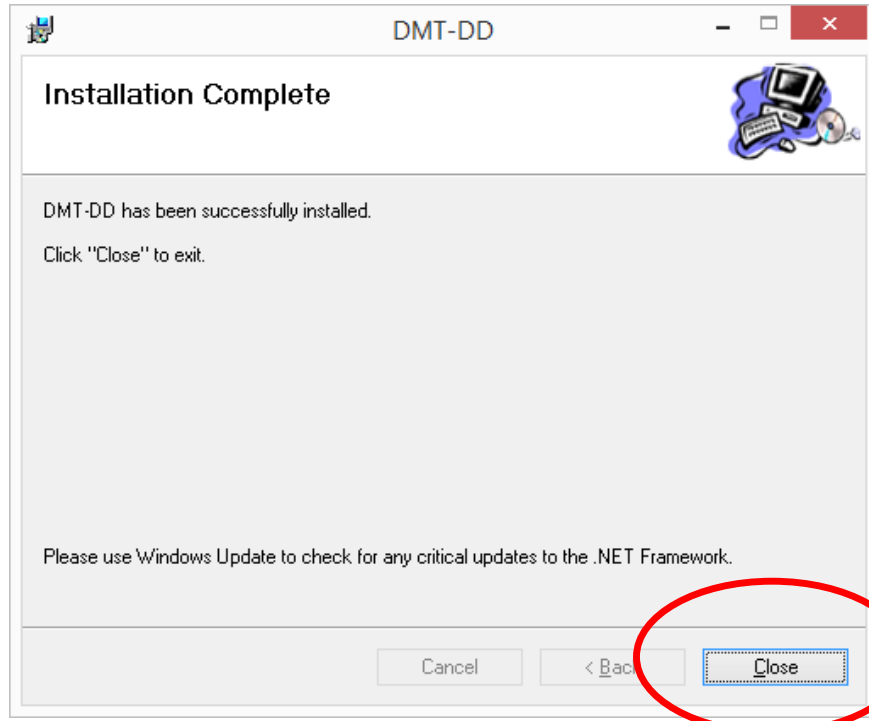


Click [Install]

Windows XP:



Click [Continue]



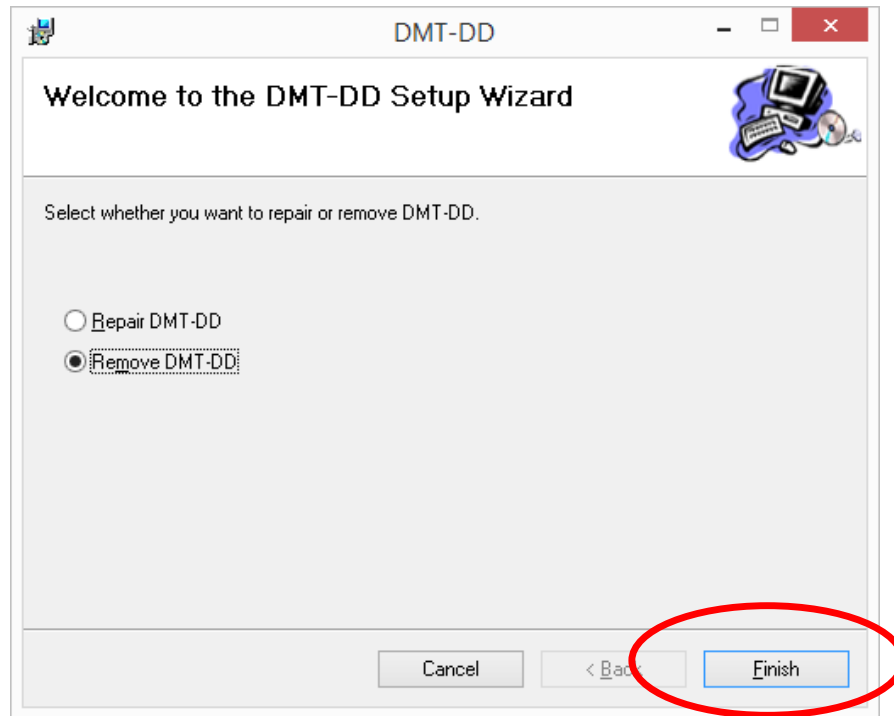
Once install is complete, click [Close].

Install is complete at this point.

4. Uninstall

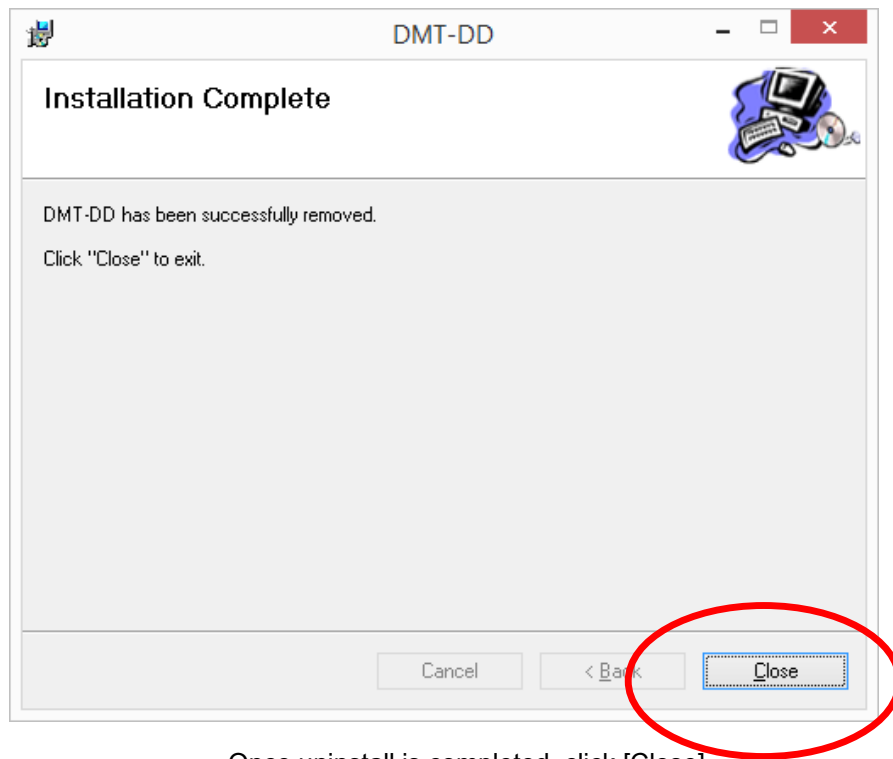
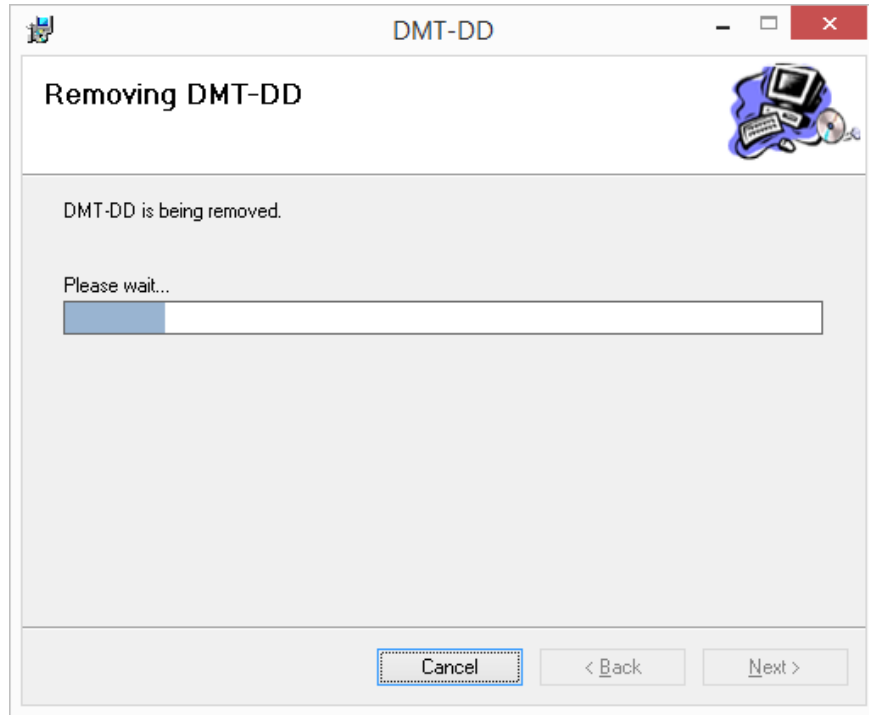
Double-click either [DMT-DDSetup.msi] or [DMT-DDSetup_ms.msi], whichever was used at install. Menu for repairing/removing DMT-DD.msi. will appear. Select [Remove DMT-DD], and click the [Finish] button.

*Uninstall may fail if the Resident Function was previously enabled. Make sure to disable the Resident Function before uninstalling (page 52).



(Note) If you uninstall DMT-DD, the installed driver will be uninstalled automatically.

(Note) If uninstall fails, try uninstallation again after executing [Repair DMT-DD].



Once uninstall is completed, click [Close].

Uninstall is complete at this point.

5. Startup of Touch Screen Driver Setting Tool

If the software install was successful, a shortcut for [DMT-DD] will be created on the desktop.



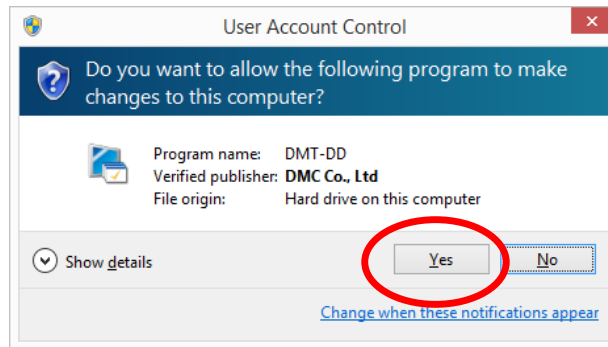
Either double-click the shortcut or execute it from the program file:

32bit: [System Drive] \ Program Files \ DMT-DD \ bin \ DMT-DD.exe

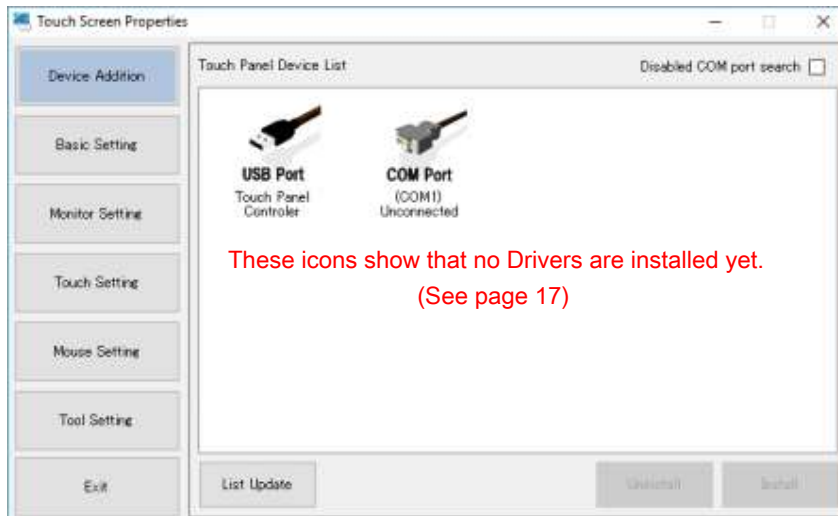
64bit: [System Drive] \ Program Files(x86) \ DMT-DD \ bin \ DMT-DD.exe

•Windows 7 or up OS

This setting tool needs **administrative privilege will be required** because it will install the driver. In some settings of UAC (User Account Control), the dialog like below will appear. If this dialog appears, click [Yes].



Once start-up is completed, the Device Addition screen will appear.



6. Overview of Setup Procedures for Touch Screen Drivers

6.1. Procedures to setup each touch screen driver connection

To use the touch screen driver, the procedures below are required for each monitor. Refer to the corresponding pages in this manual for details of the selections to be made in each step.

1. Driver Install (refer to section 7-2, Install, on page 18)

Perform a Driver installation for each connection type in the Device Addition screen.

2. Configuration File Selection (refer to [8-8. Configuration File], page 43)

Select a configuration file in the Basic Setting screen.

***The default input mode after driver installation is touch input. Make a change only if mouse mode is desired, which is **REQUIRED** for Win XP.**

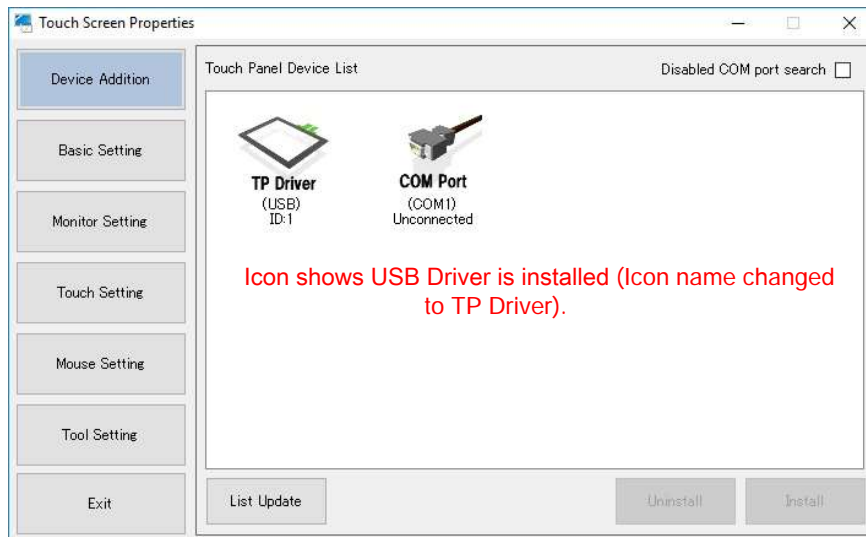
In order to make normal touch input in Windows 7 or above, the Tablet PC Settings described below must be performed.

3. Tablet PC Setting* (refer to [10-1, Touch Screen Configuration])

Open Tablet PC Settings from Touch Setting screen, and execute [Setup] under [Configure].

* This procedure is not necessary for mouse input.

Once the installation is completed successfully, the icon of touch screen driver, its connection method, and ID, will appear.

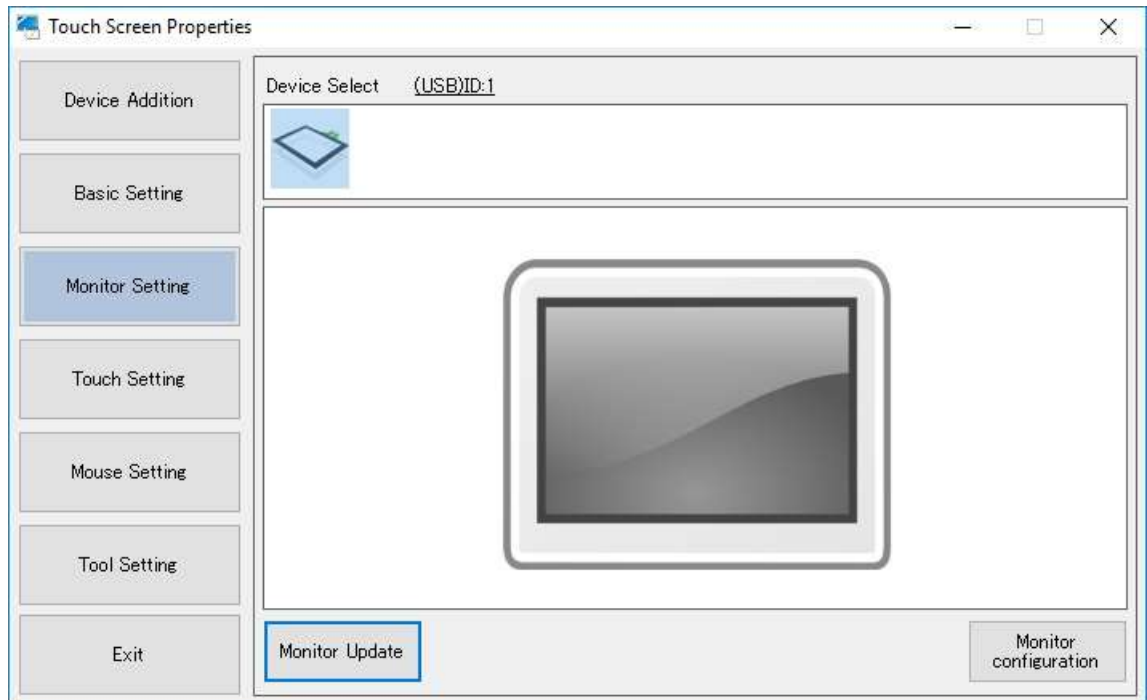


■ **Additional Setting Procedure for Multi-display Environment**

IF the driver is to be used under multi-display environment, the following setting must be performed after installation.

1. Monitor Configuration (refer to [9.Monitor Setting])

Execute [Monitor configuration] in [Monitor Setting] screen.



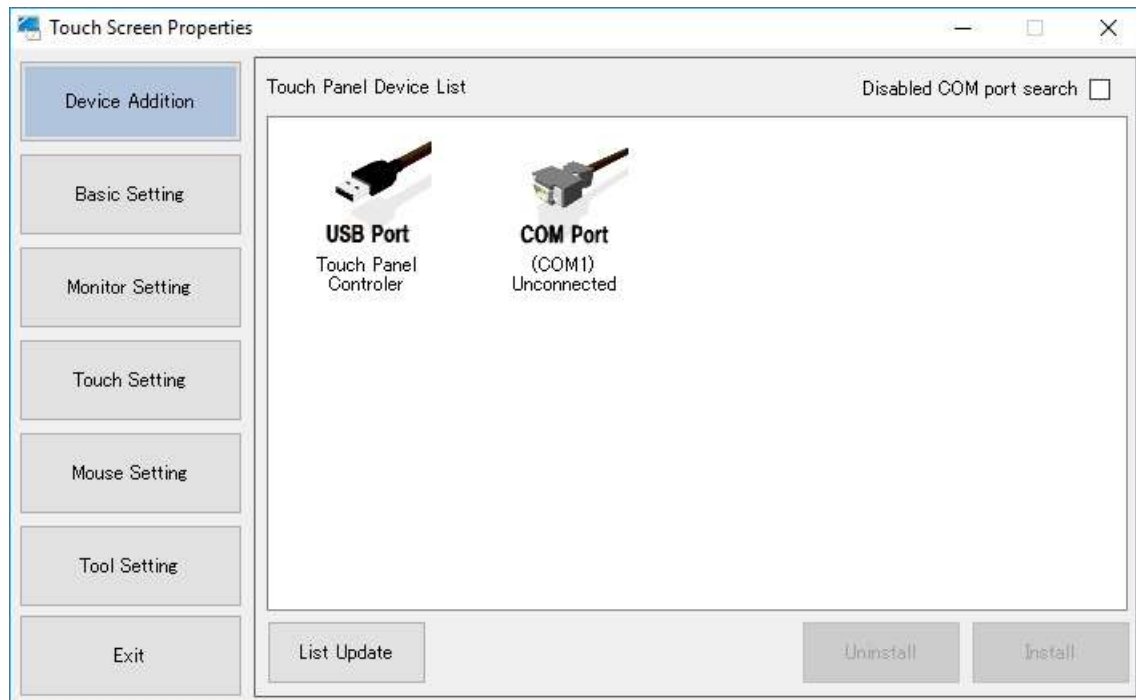
*If monitor is replaced with a new one, execute [Monitor configuration] again.

If USB port or COM port connection is changed, execute [Monitor configuration] again.

7. Device Addition

7.1. Touch Panel Device List

The connected USB touch screen controller and/or connectable COM port will be indicated.



The connected DUS touch screen controller, connectable COM port, and installed driver will appear in icons.





The list will be automatically updated at connecting/disconnecting of the USB touch screen controller.

*There will be no automatic update during install and uninstall.

The list can be updated manually as well, by clicking the [List Update] button.

***The distance between the icons depends on the OS setting of icon distance.**

The icons to appear on the Touch Panel Device List are as below.

Icon	Connection Type	Note
 <p>USB Port Touch Panel Controler</p>	<p>USB</p>	<p>This icon will not appear if a driver is already installed.</p>
 <p>COM Port (COM1) Unconnected</p>	<p>COM Port VCP Port</p>	<p>This icon will not appear if a driver is already installed.</p>
 <p>TP Driver (USB) ID:1</p>	<p>Installed Driver USB driver</p>	<p>This icon indicates that a driver is already installed on the touch screen connected via USB.</p>
 <p>TP Driver (COMx) ID:1</p>	<p>Installed Driver COM driver</p>	<p>This icon indicates that a driver is already installed on the touch screen connected via USB, COM, or VCP.</p>

7.2. Install

This section is about installing a USB or Serial (RS-232) touch screen driver.

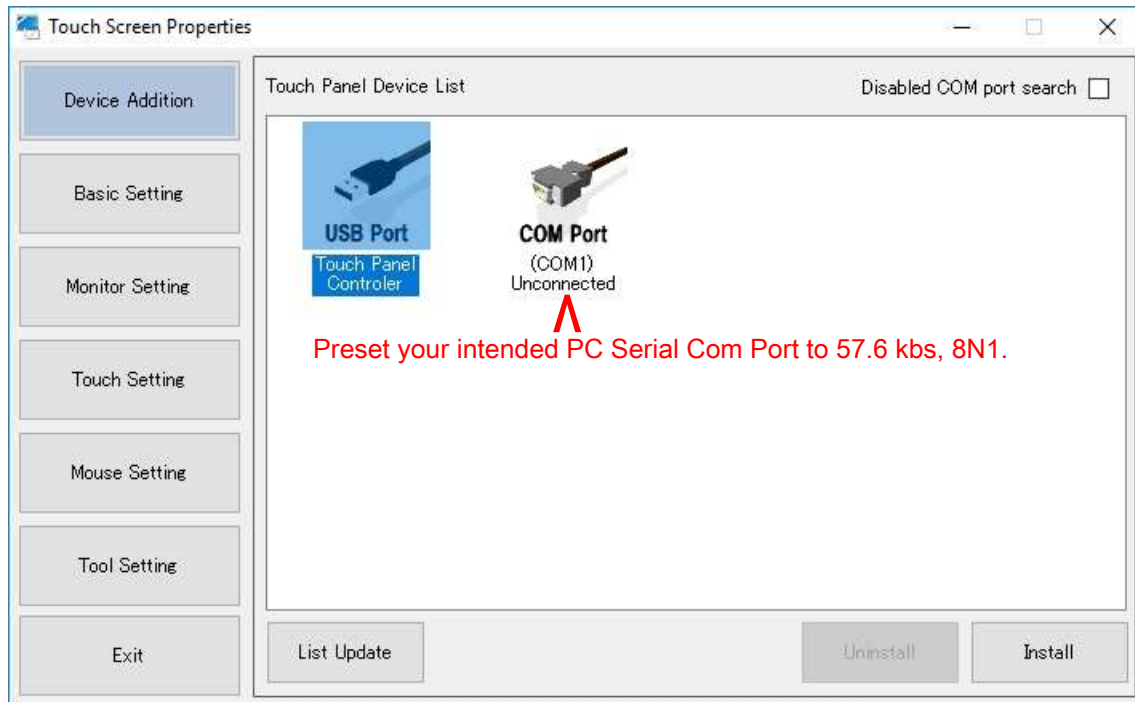
Follow the procedures below for installation.

Connect the touchscreen monitor now before clicking the install button.

(If DMT-DD is installed, the connection is USB, and the OS is Windows 7 or later, the USB driver will be installed automatically as soon as the plug connects.)

NOTE: There is no data activity on an RS-232 line or port until AFTER the connection with the DMC driver is made.*

1. Select the device intended to be installed.



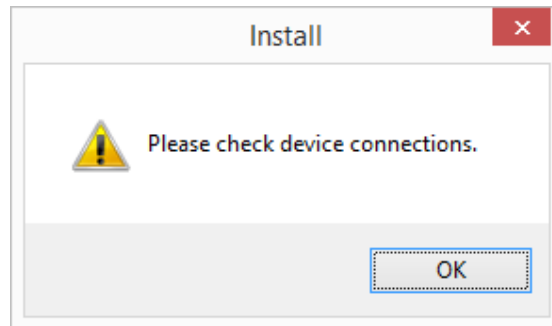
***which defeats utilities (like PuTTY's) ability to find which port the monitor is plugged into.**

Select the device from the Touch Panel Device List for install, and click [install].
Or touch the touch screen you intend to install. The controller connected to the touched touch screen will be selected.

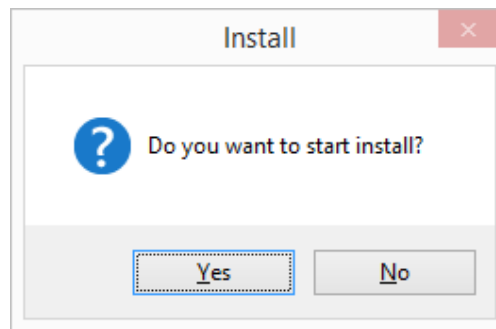
The installable devices are as below.

Controller	VID / PID	Connection
DUS series (FW-Ver7)	0x0AFA / 0x07D2	USB / Serial
DUS series (FW-Ver8)	0x0AFA / 0x07D3	
DUSx100 series	0x0AFA / 0x07D5	
DUSx200 series	0x0AFA / 0x07D7	
MTR series	0x0AFA / 0x03EC 0x0AFA / 0x03ED 0x0AFA / 0x03EE 0x0AFA / 0x03EF	
TSC series	0x0AFA / 0x03E8	

To setup a serial driver, the install will not start if a connection with the monitor cannot be established before the **Install** button is clicked. You will receive this error message:



2. If there is serial communication, this confirmation dialog will appear. Select [Yes].



3. The dialog below will appear at the initial install.

Windows7 or above

Select [Install].



WindowsXP

Select [Continue Anyway].

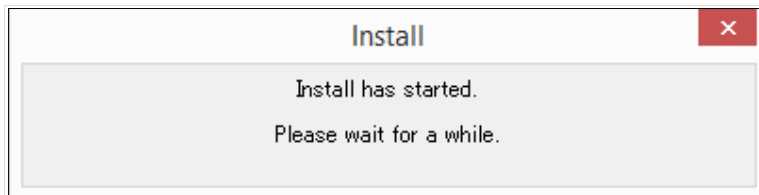


The screen above may appear several times. Click [Continue Anyway] each time.

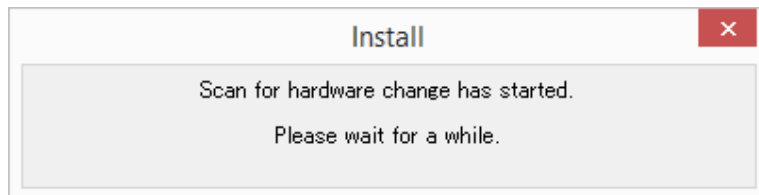
Under WindowsXP environment, the screen below may appear during install.
The install will be performed automatically. Do not click anything.



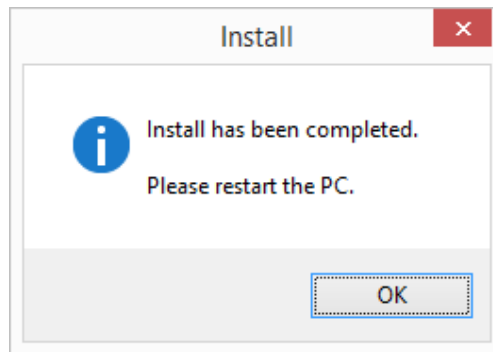
4. Install will begin, and the indication below will appear. Please wait for a while.



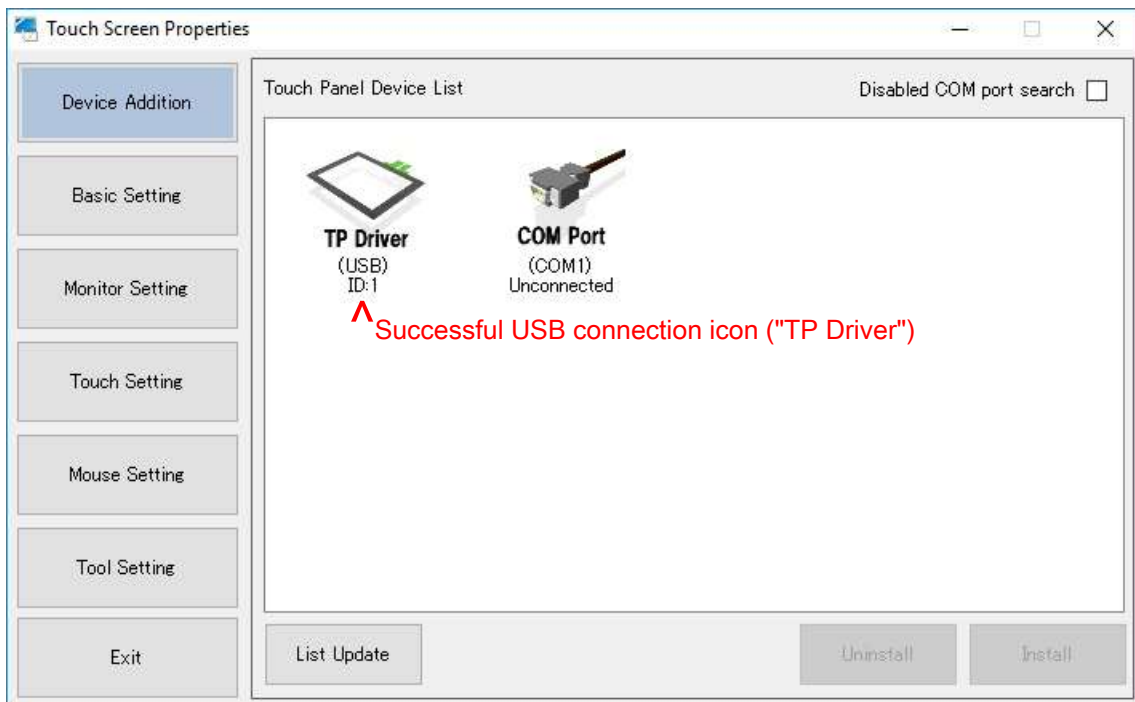
5. Device will be checked once install is completed. Please wait for a while.



6. Once install is completed, the dialog below will appear. Click OK.



7. Install completion



Once install is completed, [TP Driver] will appear in the [Touch Panel Device List] above. Restart the PC after the install completion.

The install is completed at this point.

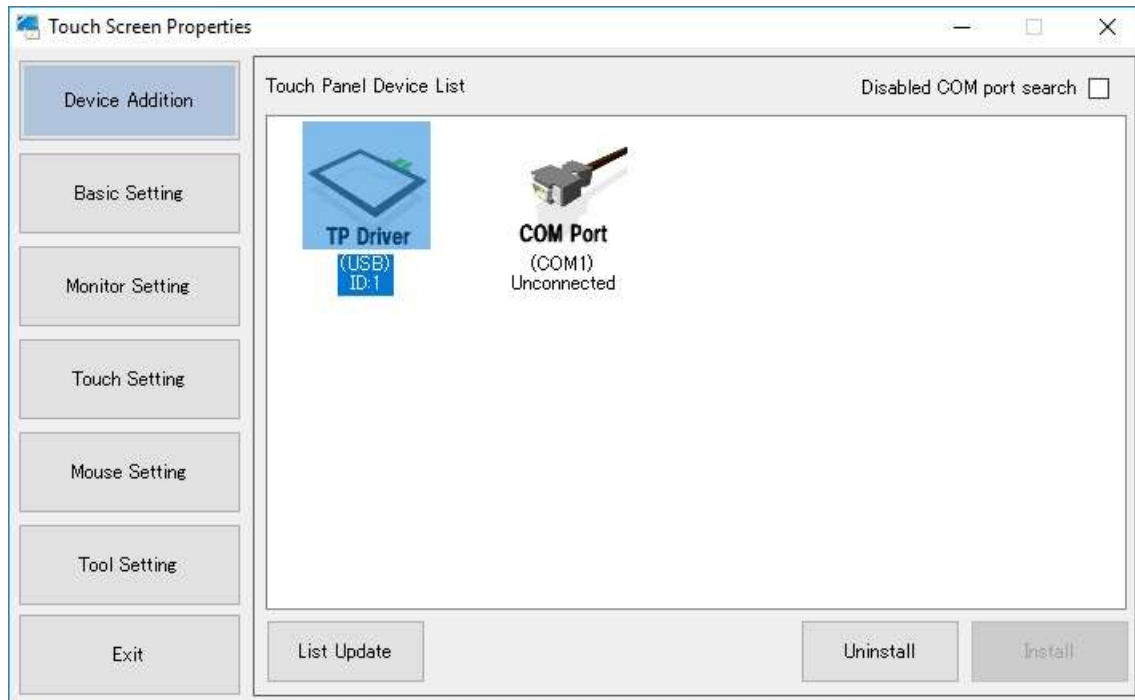
Note: For Windows10, although monitor is connected, operation will be single-touch until the PC is rebooted.

7.3. Uninstall

Uninstall the touch screen driver, and install Windows standard driver.

Follow the steps below for uninstall.

1. Select the device intended to be uninstalled.



Select the driver icon on the [Touch Panel Device List], and click [Uninstall].

Or touch the touch screen you intend to uninstall. The driver software related with the touched touch screen will be selected.

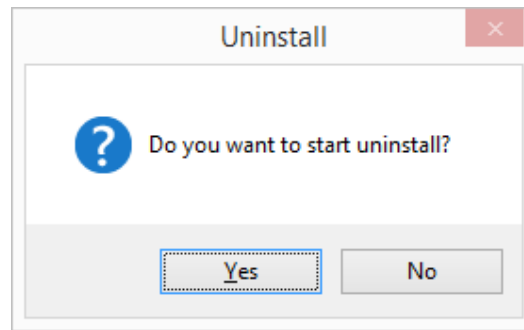
<Note>

■How to uninstall the driver for TSC controller used via USB communication

USB connection driver for TSC controller cannot be uninstalled from the setting tool "Touch Screen Properties". (Even if driver uninstallation is conducted, the same touch driver will be reinstalled by PnP of the USB cable because Windows has no standard driver for the TSC controller).

If you wish to uninstall the driver, uninstall the whole DMT-DD from Windows "Control Panel". TSC driver will be uninstalled once DMT-DD is uninstalled.

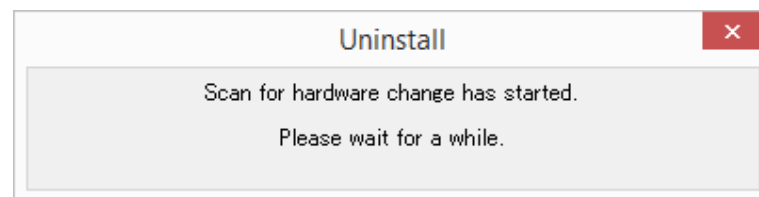
2. The confirmation dialog will appear. Select [Yes].



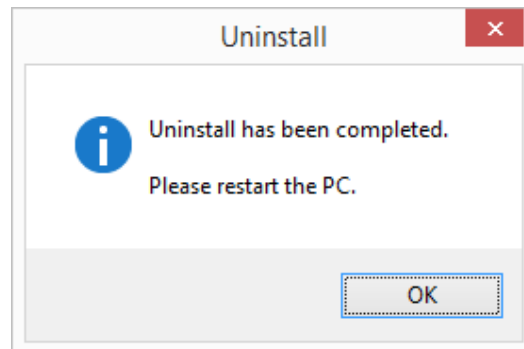
3. The device is being uninstalled. Wait for a while.



4. Uninstall has been completed. The device is being checked. Wait for a while.

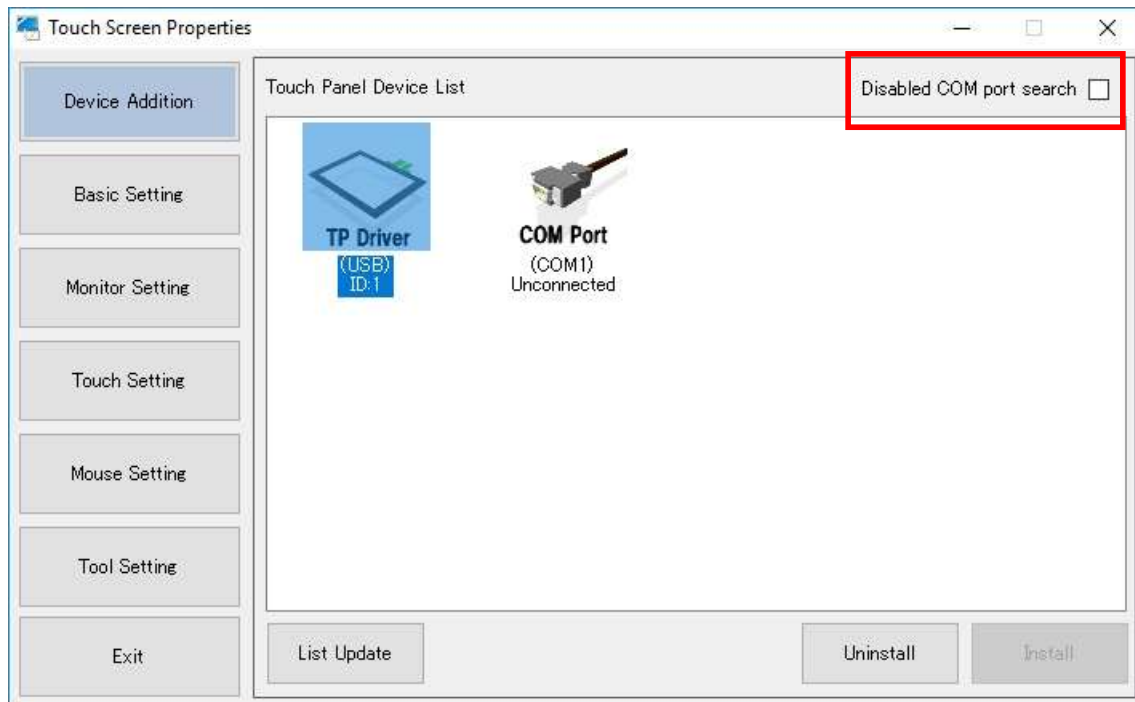


5. Uninstall has been completed. Click [OK] and restart the PC.



Uninstall is completed at this point.

7.4. Disabling COM Port Search



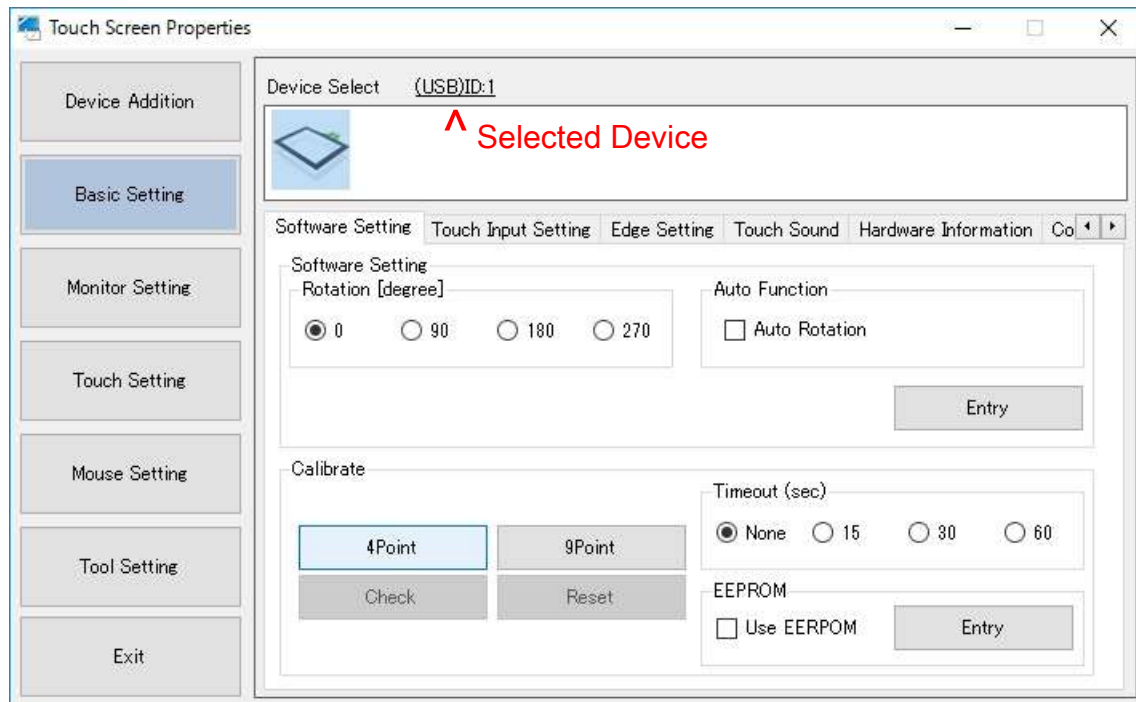
■Disabling COM port search

When [Disabled COM port search] is checked, the driver will not search for touch controllers connected to the COM ports. When unchecked, the driver will send a command to each COM port, and confirm the connection of a touch controller if there is a reply to the sent command.

NOTE: Driver for COM port cannot be installed if [Disabled COM port search] is checked.

Default: Unchecked.

8. Basic Setting

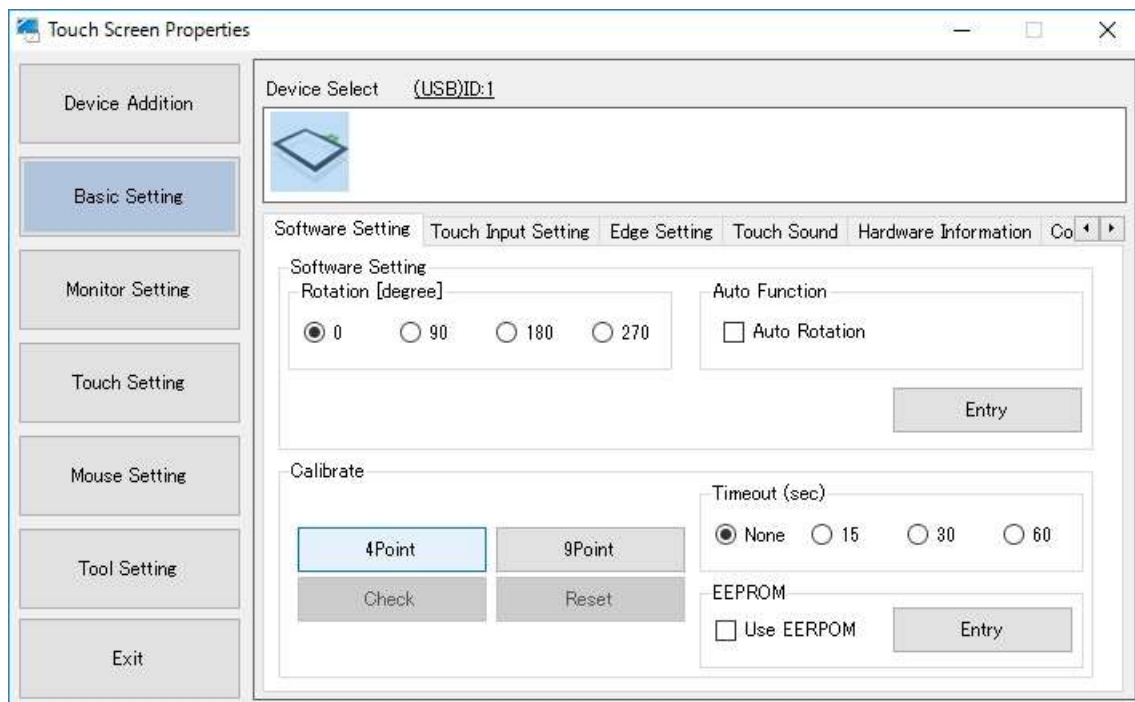


You may make settings and maintenance for the driver and controller individually.

Select the driver or touch screen controller from [Device Select]. Or touch the touch screen you intend to configure settings on. The driver or touch screen controller related with the touched touch screen will be selected.

For **Win XP**, you **must choose** mouse.mfd (page 43), and you **may choose Beep** (p35: Hardware, Touchdown, [Entry]).

8.1. Software Setting



You can configure settings on the driver or touch screen controller being selected.

•Rotation

X-axis and Y-axis coordinates will be outputted in rotation of 0, 90, 180, and 270 degrees. The default setting is [0 degree].

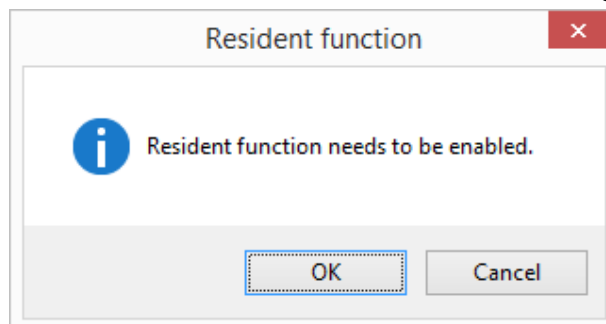
■Auto Rotation

If checked, Auto-rotation function performed by resident function will be enabled.

This function is for mouse operation only (refer to 8-7).

For more details, refer to the section 12.[Tool Setting] in this manual.

If “Auto-rotation” is checked when resident function is disabled, the following dialog will appear.



This function is not enabled by default.

•**Calibration** (Calibration does not apply to **boland** PCap monitors [which use a DUS controller])
(But, you **CAN** adjust Edge Setting, on page 34 [try: 25,25,25,25,25,25,25,25].)

•Calibrate

Software calibration can be performed.

The software calibration will be necessary if MTR and/or TSC controller for a resistive touch screen is used. The software calibration will adjust the touched points and cursor positions.

The calibration data will be written into the registry. If [Use EEPROM] is checked, the calibration data will be saved in the EEPROM on the touch controller.

Select the driver, then touch [4Point] or [9Point] under [Calibrate].

Setup of monitor configuration (and Tablet PC Setting if touch input is necessary) needs to be completed before executing this function.

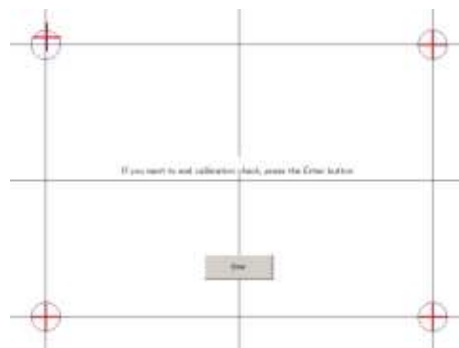
•Reset

If you want to reset the calibration result, execute Reset.

•Check

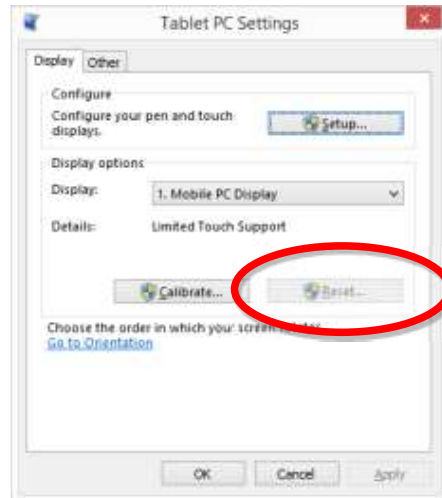
Calibration result can be checked. The ideal points will be indicated with blue while the touched correction points will be indicated in red.

The touched correction points (red crosses) do not have to be same as the ideal points (blue) because the displayed correction points are raw data.

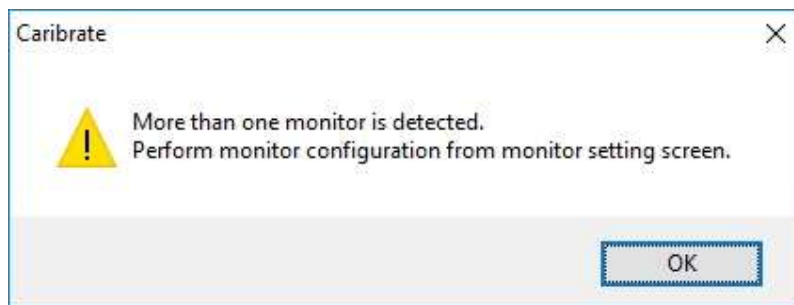


Press [Enter] to finish the check.

Note) If you want to perform calibration with this function, do not use the Windows standard calibration function. If settings are already performed with Tablet PC Settings, reset is required beforehand. Make sure that [Reset] button is grayed out as the following figure,



Note) If [Monitor configuration] has not been performed, the following dialog will appear.

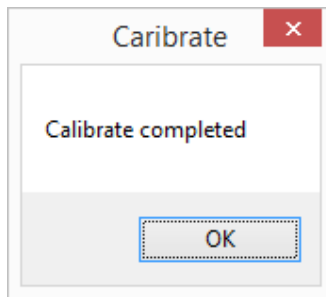


•Calibration method

1. Execute [4Point] or [9Point] under [Calibrate] in Software Setting.
2. The calibration screen will appear on the monitor for the touch screen related to the selected driver.

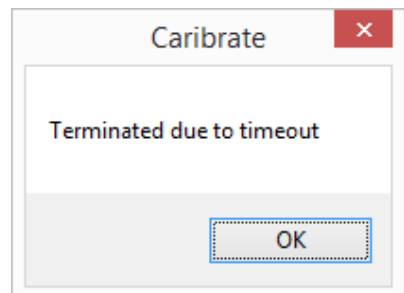


3. Touch the center on the marker on the screen. After it is touched, the next marker will appear. Continue to touch the markers as they appear.
4. After all the marks are touched, the calibration will be finished. The dialog below will appear. Click [OK] to end the calibration.



•Time out (Sec)

Timeout is executed during 4 or 9 points calibration. Timeout period can be selected from among [15], [30], or [60] seconds. If the selected time period elapsed without touch operation, it will time out. Click [OK] after timeout, or wait until another timeout period elapsed. Then, it will return to the status before calibration. *This configuration is common to all the touch screens. Default setting is [None] (Timeout is not performed).



•EEPROM

If the touch controller to be used has EEPROM, the calibration data can be saved into EEPROM. If EEPROM is to be used, check [Use EEPROM] and click [Entry].

*If the touch controller does not have EEPROM, [Use EEPROM] will not appear.

Touch controller with EEPROM

EEPROM

Use EEPROM

Touch Controller without EEPROM (example, DUS)

EEPROM

EEPROM is not found.

The correspondence table of the controllers and EEPROM

Controller	Connection	EEPROM	4point-calibration	9-point calibration	Check	Reset
DUS	USB	×	-	-	-	-
	Serial	×	-	-	-	-
MTR	USB	○	○	△*2	-	○
	Serial	○	○	△*2	-	○
TSC	USB	△*1	○	○	-	○
	Serial	△*1	○	○	-	○

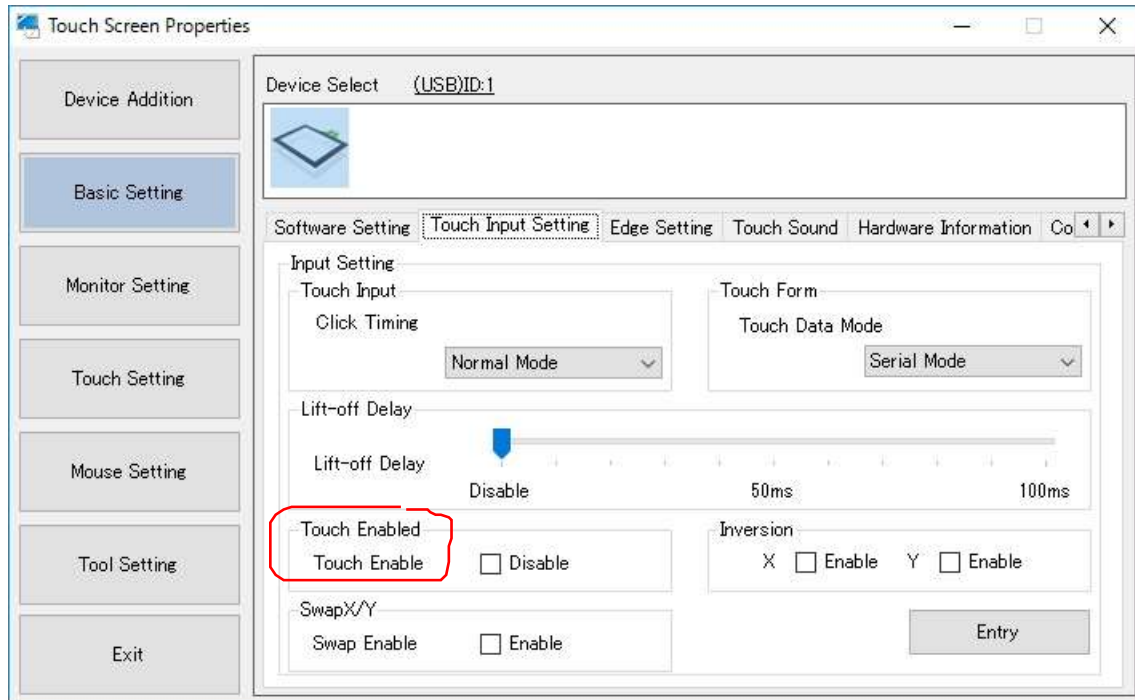
*1 [Use EEPROM] will not appear if the controller does not have EEPROM.

*2 It depends on firmware versions that whether EEPROM is supported or not.

<Note>

Due to the specification of the touch controller, accurate location information may not be acquired when direction of the touch screen is different from the one indicated in the drawing, and [Use EEPROM] is checked. In such case, enable X or Y inversion, then perform calibration.

8.2. Touch Input Setting



■ Touch Input

Touch input setting of the driver selected on the combo box can be configured. After the configuration is made, click [Entry].

◇ Click Timing

● Normal Mode

Touch down will cause touch down, touch up will cause touch up.

● Click at touch up

Click (touch down → touch up) will be caused at the timing of touch up.
Even for touch output (touch.mfd), the pointer will be changed to cursor.

● Click at touch down

Click (touch down → touch up) will be caused at the timing of touch down.
Even for touch output (touch.mfd), the pointer will be changed to cursor.

Default: Normal Mode

<Note> If [Click at touch up] or [Click at touch down] is selected, right click by long touch will not work.

- **Touch Data Mode**

Touch data mode of the driver selected in the combo box can be specified.

Once the setting is changed, click [Entry] after change is made.

Rebooting of PC is necessary after the settings were changed.

Touch Data Mode

Serial Mode

Touch data will be outputted in serial format.

Select this mode for Windows7/8/8.1.

Hybrid Mode

Touch data will be outputted in parallel format.

Select this mode for Windows10.

Default : [Serial Mode]

- **Lift-off Delay**

Delay time of touch-up notification by the driver can be specified.

Once a touching finger is lifted off, touch-up will be notified after the specified time is past.

Delay time can be disabled or specified by 10ms within the range from 10ms to 100ms.

Default: [Disable]

- **Touch Enabled**

Touch input can be disabled if checked.

This function is not enabled by default.

- **X-axis Inversion**

If enabled, X-axis coordinates will be inversely outputted at touches.

This function is not enabled by default

- **Y-axis Inversion**

If enabled, Y-axis coordinates will be inversely outputted at touches.

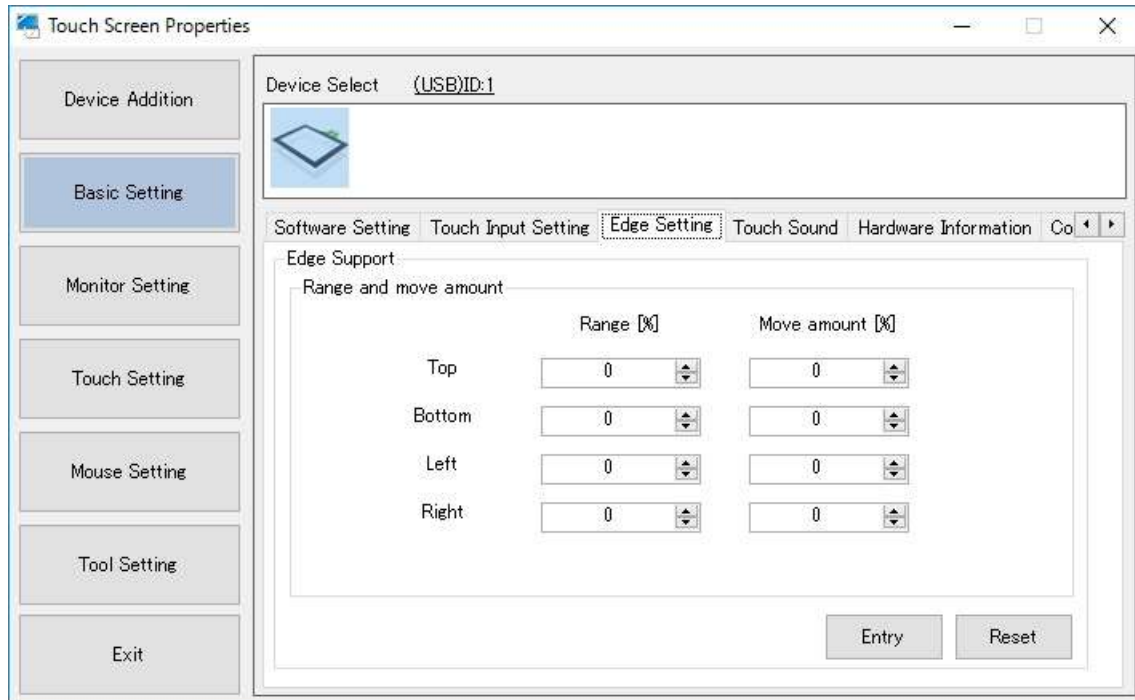
This function is not enabled by default

- **Swap X/Y**

If enabled, X and Y coordinates will be switched.

This function is not enabled by default.

8.3. Edge Setting



Edge setting can increase or decrease move amount of a cursor when it is approaching to edge of the screen. This function may be effective in such cases to make hidden taskbar to appear by moving a cursor into the edge.

■ Range and Moving Amount

Set Range[%] and Move amount[%] of the screen edges (left, right, top and bottom).

Click [Entry] after setting is finished. [Reset] initializes the setting values to 0.

Value range of Range[%]: 0 to 50

Value range of Move amount[%]: -50 to 50

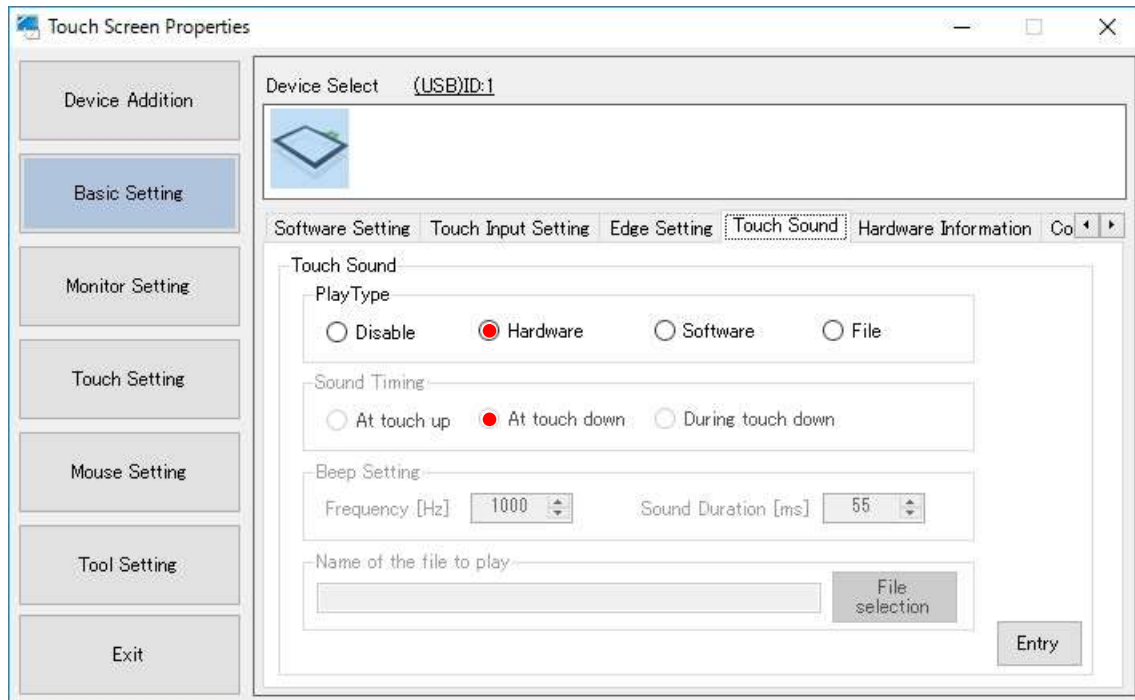
Default: 0

Example:

If taskbar is on the bottom edge of screen, [Range[%] =10 and [Move amount[%]=20 may make it easier to make the hidden taskbar to appear.

Adjust the setting according to the usage environment.

8.4. Touch Sound



Touch sound of the currently-selected driver can be configured. Click [Entry] after configuration.

■ Play Type

- Disabled
No touch sound
- Hardware
BEEP on the motherboard sounds.
*This function depends on the hardware.
- Software
BEEP sounds from the speaker.
- File
Specified wav file will sound from the speaker.

■ Sound Timing

- At touch up
Touch sound will be caused at the timing of touch up.
- At touch down
Touch sound will be caused at the timing of touch down.
- During touch down
Touch sound will be caused all through touch down.

- Frequency (Hz)
 - Touch sound frequency can be configured.
 - The available frequency range is 37 Hz – 32767 Hz.
 - Default: 1000 Hz

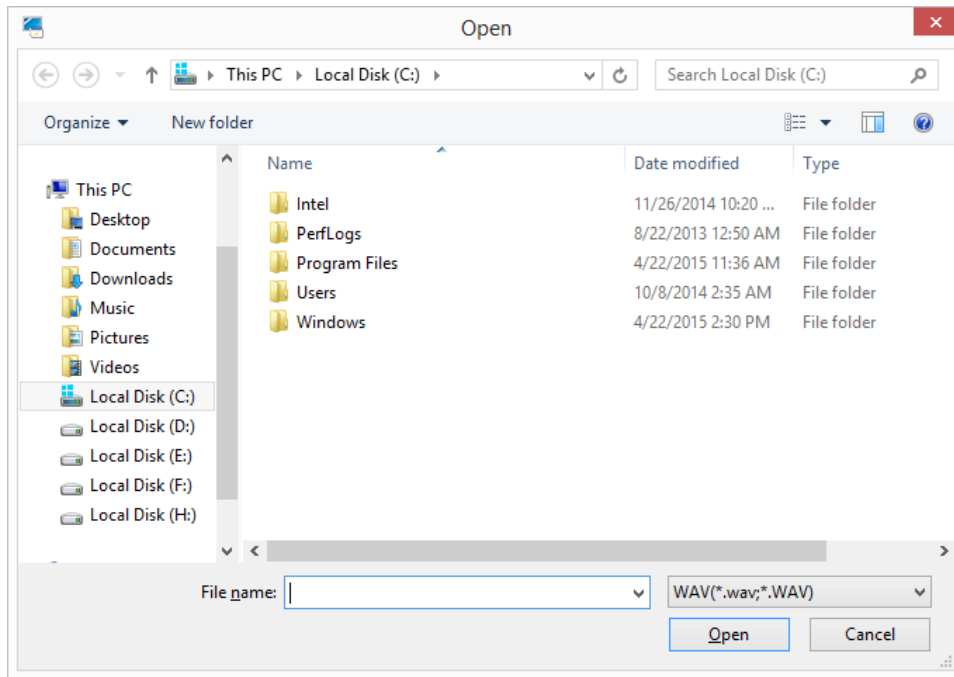
- Sound Duration [ms]
 - Touch sound duration can be configured.
 - The available duration range is 1 ms – 5000 ms.
 - Default: 55 ms

- Name of the file to play
 - Path of the wav file to be played will be indicated.

■File selection (if Play Type is File)

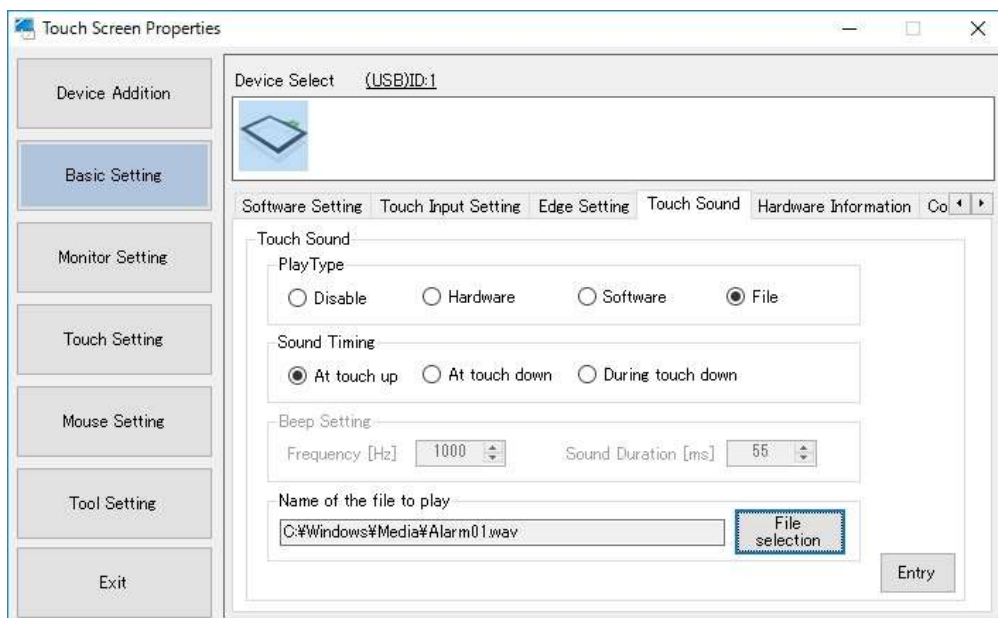
Select the wav file to play.

1. Click the [File selection] button.
2. The dialog below will open.



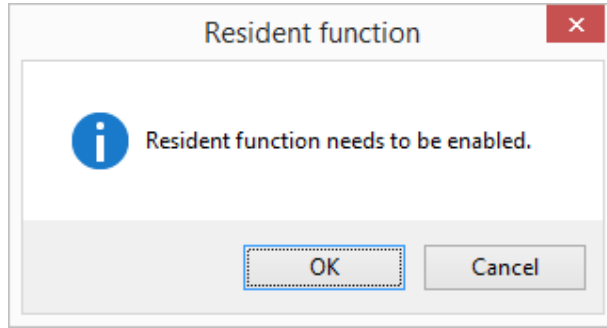
Select a [wav] file.

3. After the selection, path of the selected wav file will be indicated.

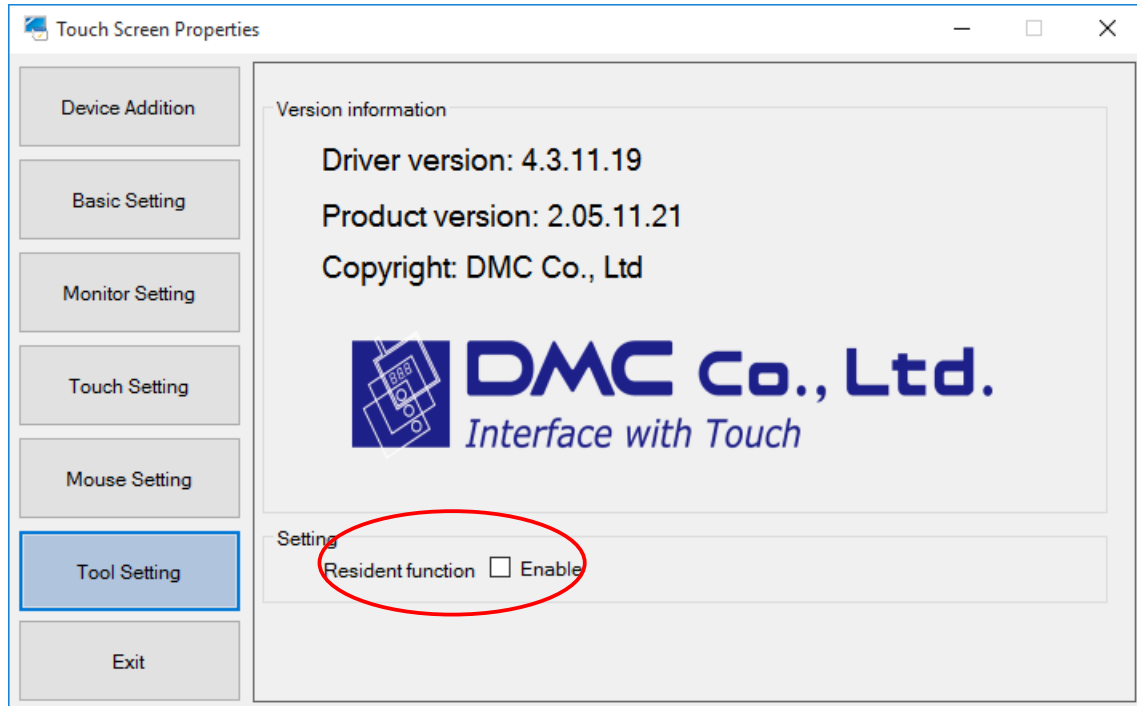


■Touch Sound and Resident function

If you intend to select either [Software] or [File] for touch sound, Resident function needs to be enabled beforehand. If the resident function is disabled, the dialog below will appear at registration.



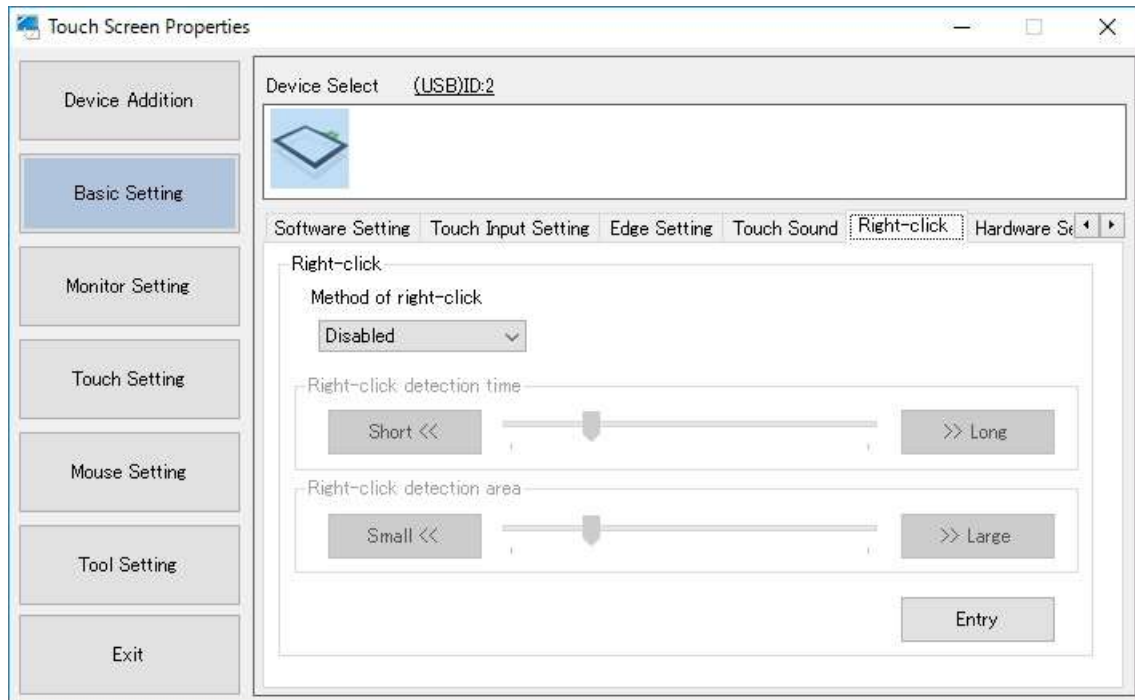
After selecting [OK], Resident function will be enabled, and touch sound will be on. Settings for Resident function can be configured on the [Tool Setting] screen as well.



Refer to the section 12 [Tool Setting] in this document for more details.

8.5. Right-click Setting

This setting screen will appear only if mouse input is available on the selected device.



- Method of right-click
 - Disabled
 - No right-click input
 - Long touch
 - Touch and hold the finger down on the touch screen will cause right-click input
 - 2-point touch
 - Touch the touch screen with two fingers will cause right-click input.
 - *TSC controller is not supported.

Default: Disabled.

- Right-click detection time *This setting is available only if Method of right-click is Long touch.
Right-click will be caused if touch duration passes the specified time.

Default: [300]ms / shortest [100]ms / longest [1000]ms

- Right-click detection area *This setting is available only if Method of right-click is Long touch.
If the touching finger moves (slides) greater than the specified area, right-click will not be caused.

Default: [300] / minimum[100] / maximum [10000]

8.6. Hardware Setting

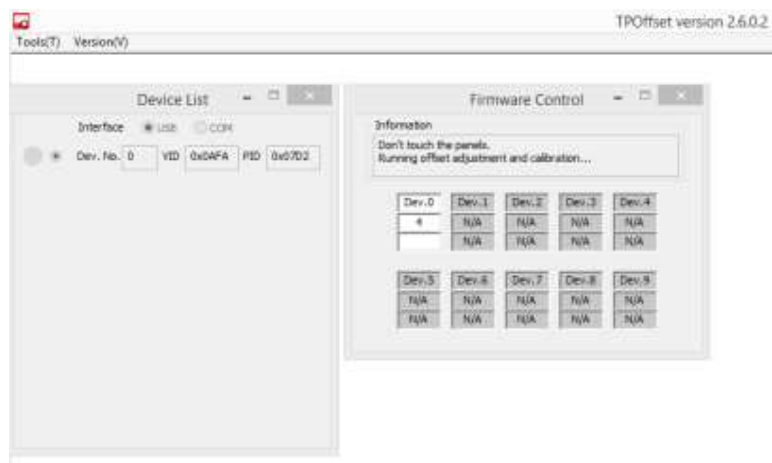
(1) DUS or its compatible controllers



- **Touch Screen Maintenance (TPOffset)**

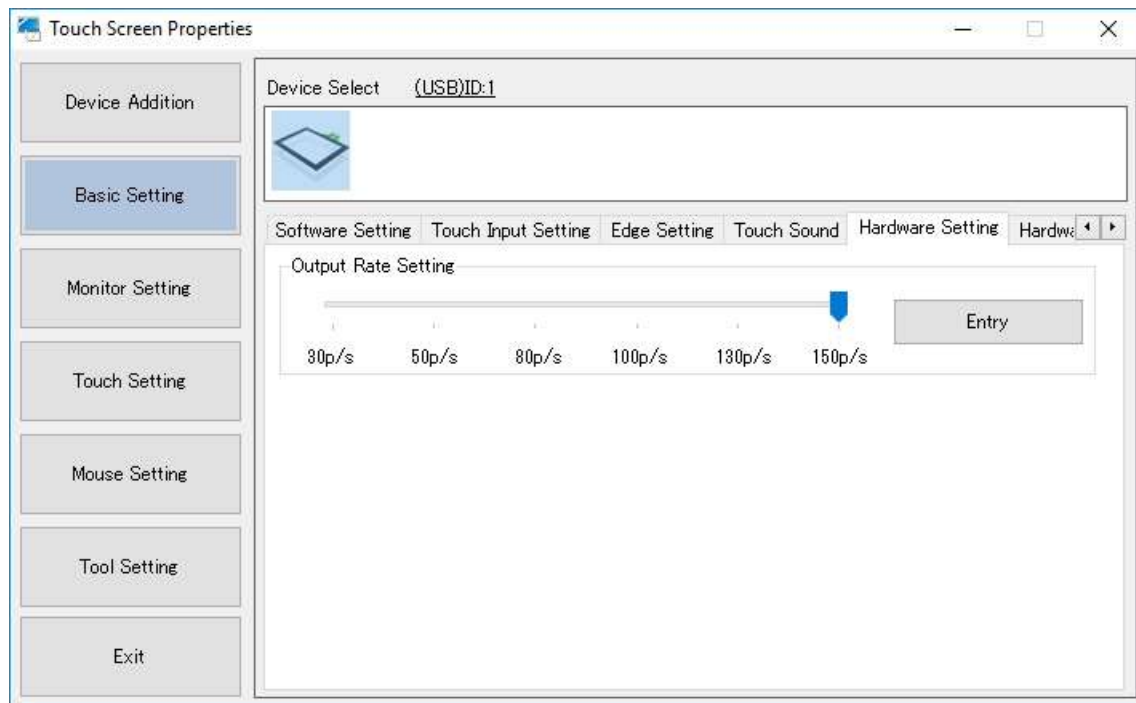
You may make the maintenance on the driver or touch screen controller being selected. Click the [Open] button.

Maintenance Tool Screen



- * The screen will not operate while the maintenance tool is open and running.
- * The setting tool will end automatically.

(2) TSC controllers **(Not Used)**



Operation setting of TSC controller can be performed. Click [Entry] after setting is finished.

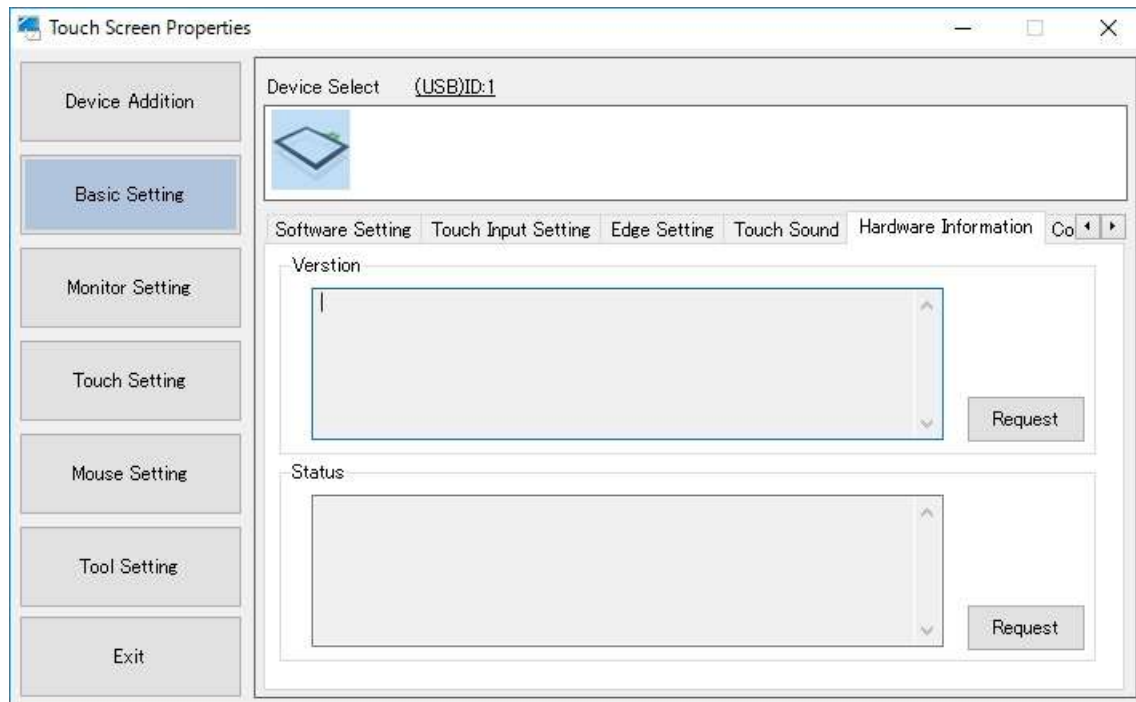
- Output Rate Setting

30 / 50 / 80 / 130 / 150p/s can be set as output rate.

The default is 150p/s, the fastest rate.

*"Hardware Setting" tab will not be displayed for MTR controller.

8.7. Hardware Information



Note: May not return a result in XP Serial

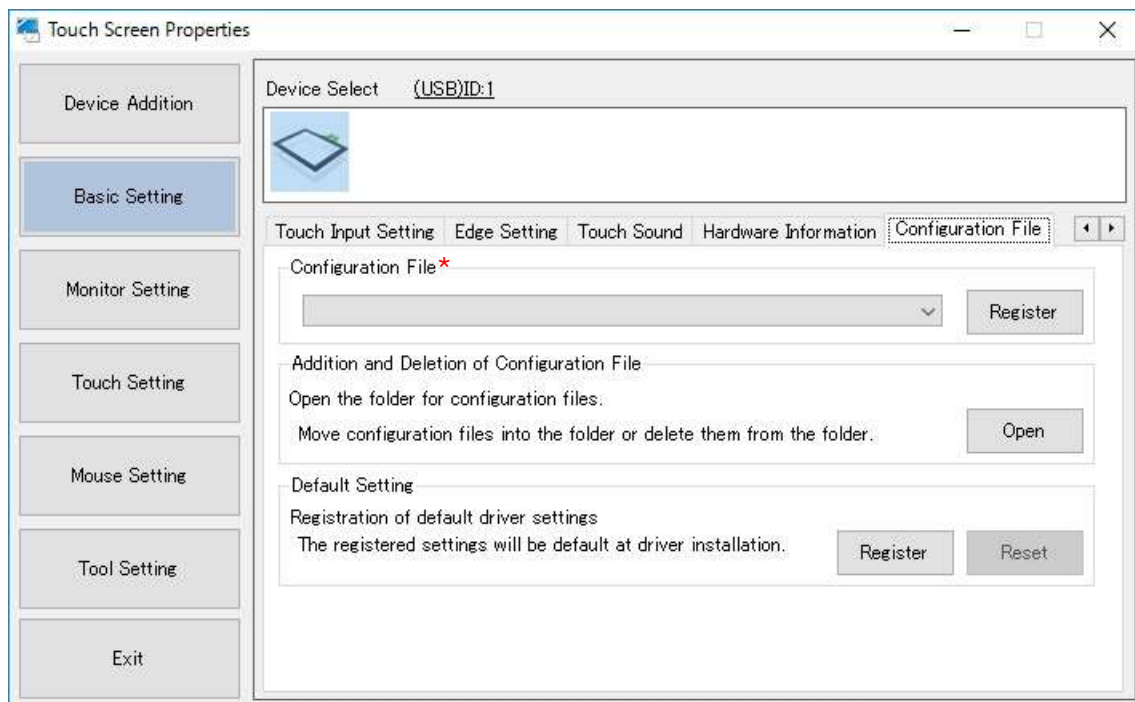
•Version

You may check the version of the controller or touch screen driver being selected. Click the [Request] button, then the controller version of the connected controller will be indicated.

•Status

You may check the status of the driver or touch screen controller being selected. Click the [Request] button, then the current status will be indicated.

8.8. Configuration File



•Configuration File

You may change the configuration file of the driver or touch screen controller being selected. Click the [Register] button after selecting the configuration file.

[Touch.mfd] : for using touch output

[mouse.mfd] : for using mouse output*

The default configuration file is [Touch.mfd].

***Please choose [Mouse.mfd] in the dropdown when you use this monitor on Windows XP.**

•Addition and Deletion of the Configuration Files

The configuration files can be added or removed on Explorer of Windows. Click the [Open] button. This is not usually used.

•Default Setting

The default settings at initial connection will be registered. The setting items for registering the default values are as follows.

The registered settings will be used as the initial values at driver installation.

Software Setting [Inversion], [Rotation], [Touch Enabled], [Auto Rotation], [Calibrate]

Touch input Setting [Touch Input], [Touch Data Mode], [Lift-off Delay], [Touch Enabled], [Inversion],
[SwapX/Y]

Edge Setting [Range], [Move Amount]

Touch Sound [Touch Sound]

Hardware Setting [Output Rate Setting]

Configuration File [Configuration File]

Right-click Setting [Method of right-click], [Right-click detection time], [Right-click detection area]

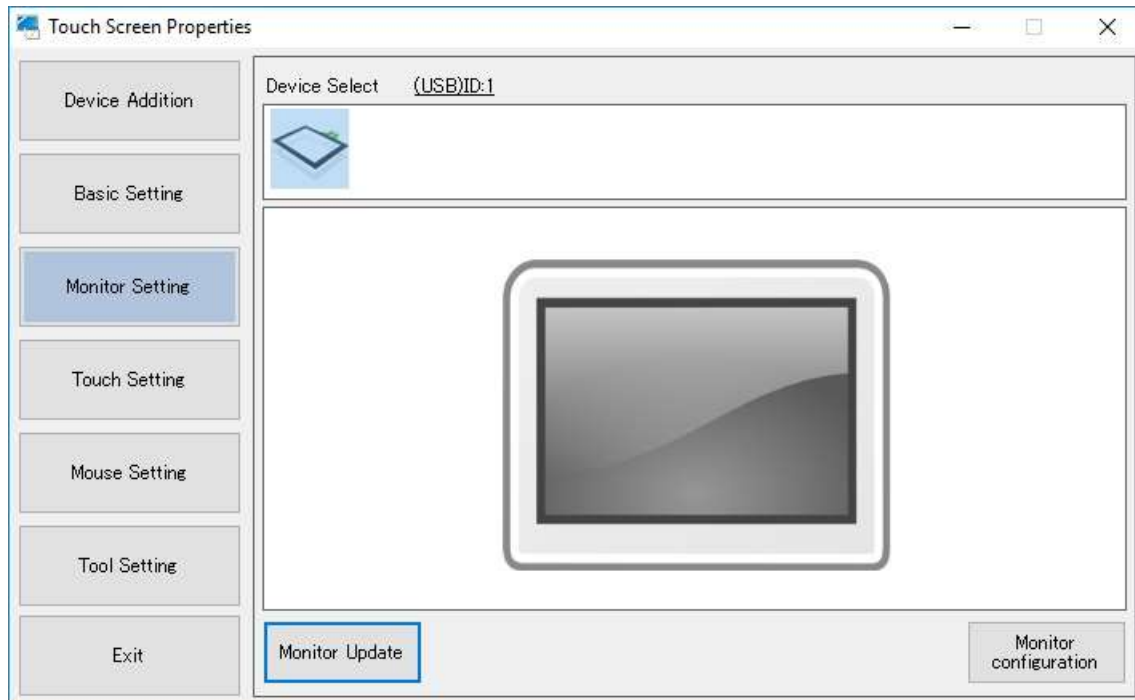
Monitor Setting [Monitor configuration]

If you wish to delete the registered settings, click [Reset.]

Note

Take note of the below if the default values are to be used under multi-monitor environment
Due to individual variability of monitors, calibration setting can be incorrect when default values
are used. In this case, perform calibration for each controller.

9. Monitor Setting



This function must be performed if the driver is used under a dual-display environment.

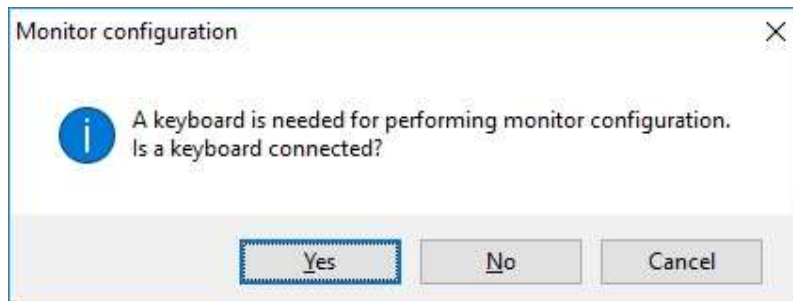
■Monitor Update

Monitor positions on the screen will be updated.

■Monitor Configuration

Monitor configuration can be performed.

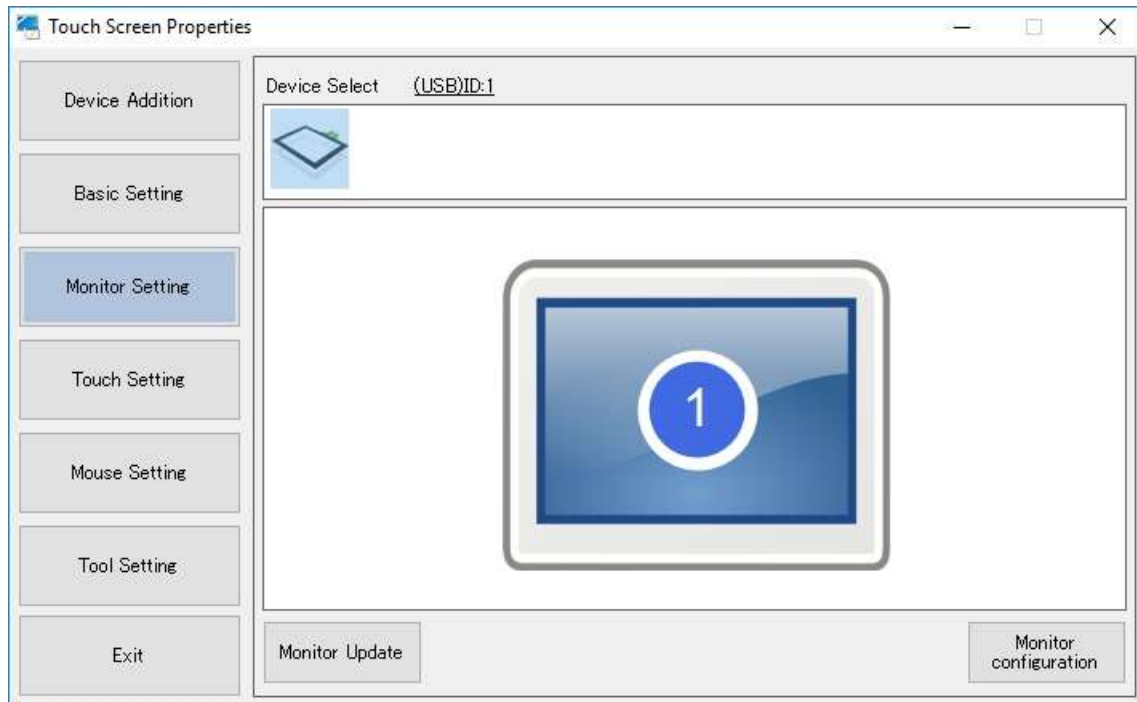
A keyboard is needed to perform monitor configuration.



■Result of Monitor Configuration

Result of [Monitor configuration] can be checked.

The monitor linked to the selected driver will be active, and its driver ID will be displayed.



■How to Perform Monitor Configuration

1. Click the [Monitor configuration] button in the [Monitor Setting] screen.
2. The screen like the following figure will appear, starting on the leftmost monitor to another.



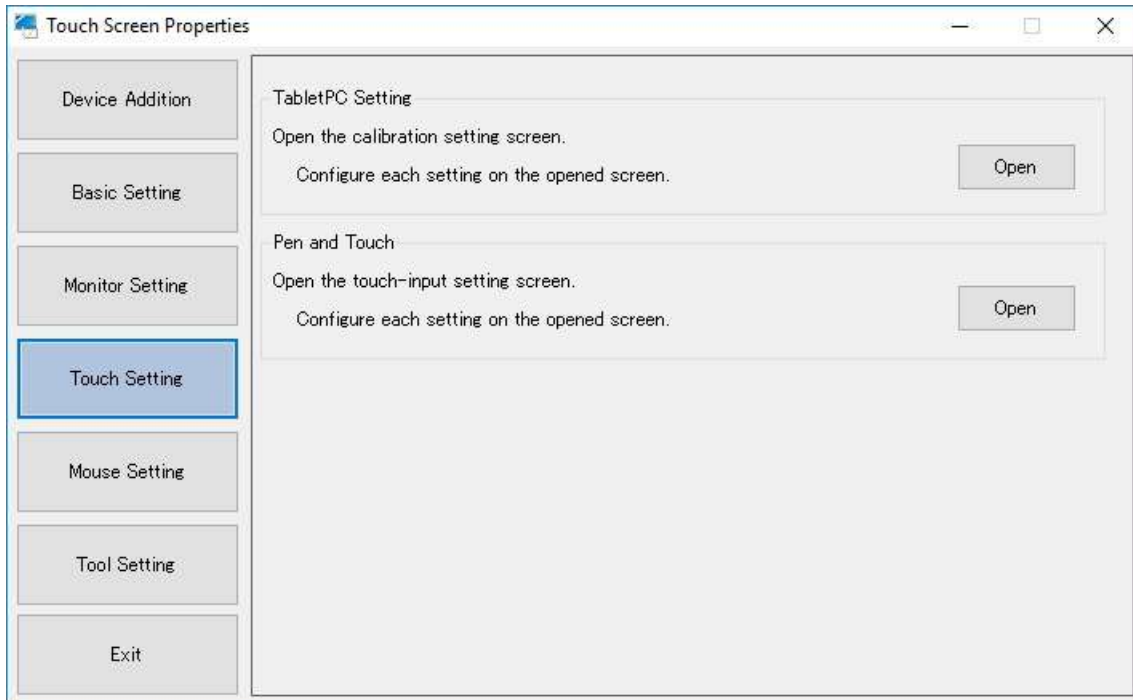
3. Tap the touch screen on this screen twice.
4. The touched touch screen will be indicated on the screen



5. Once the setting for the current monitor is completed, press [Enter].
If there are multiple monitors, the screen on the procedure2 will appear on the next monitor.
6. The setting will be completed after pressing [Enter] on the last monitor,
Press ESC if you want to cancel in the middle.

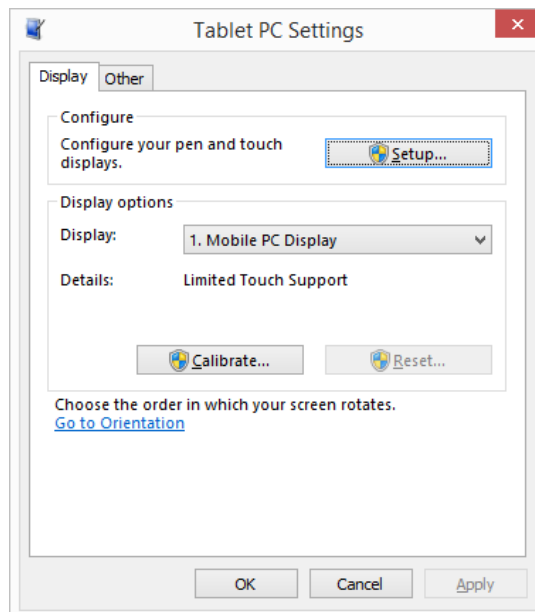
10. Touch Setting

The screen below will appear only under [Windows 7](#) or above.



- Tablet PC Settings

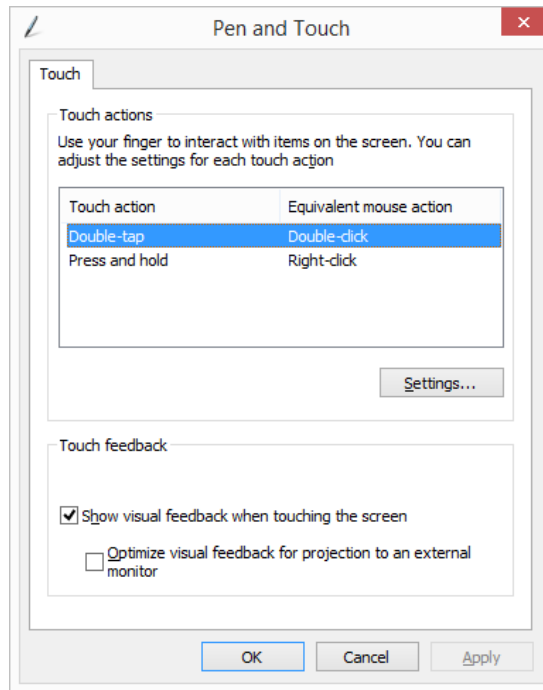
Click [Open], then the Windows standard setting screen will open.



Display configuration and calibration can be performed.

- Pen and Touch

Click [Open], then the Windows standard setting screen will open.

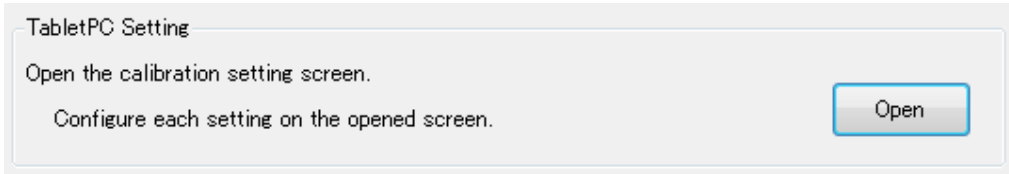


Touch input adjustment and flick/gesturing touch operation setting can be performed.

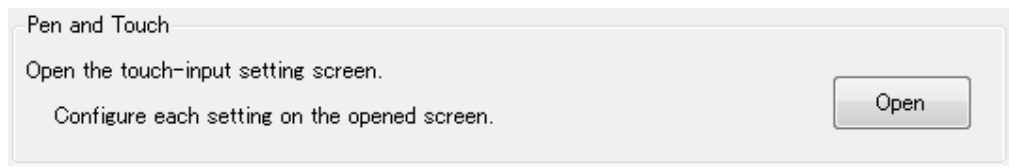
10.1. Touch Screen Configuration

If touch screen is to be used on Windows 7 or above, the following configuration will be required.

1. Click [Open] in [TabletPC Setting].



2. Select [Setup] in [Configure].



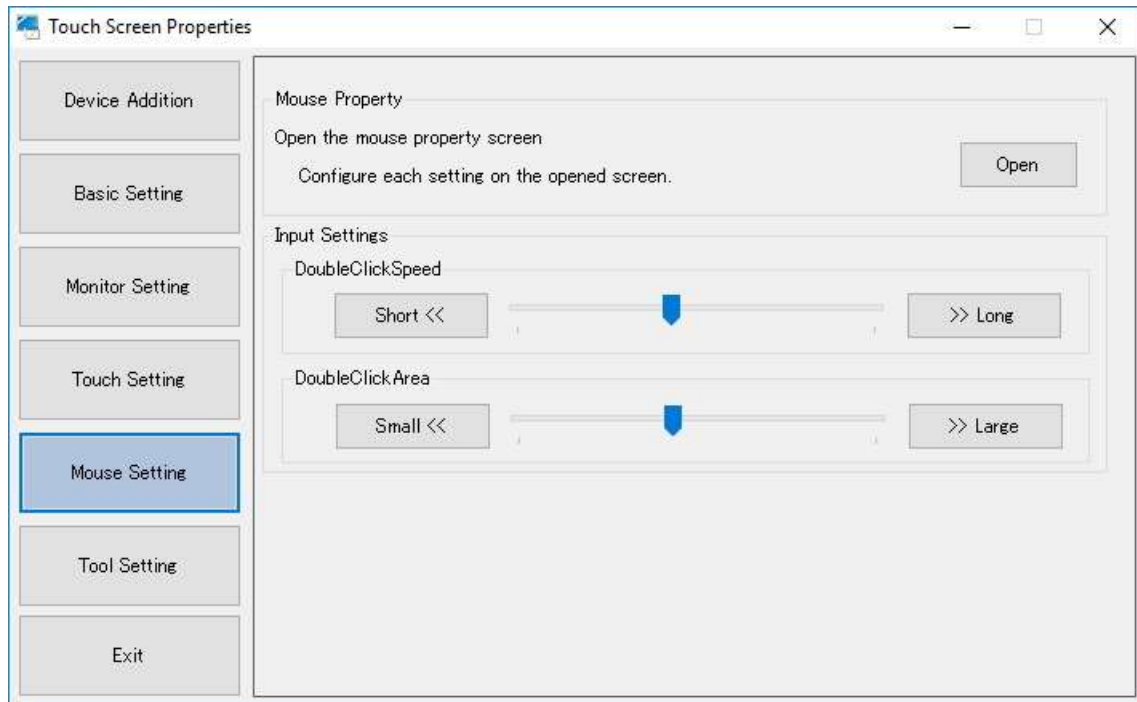
3. Touch the touch screen on which the message below is appearing.



4. Repeat the procedure 3 above as many as number of the displays.

Once the setting above is completed, the cursor will become to appear on the monitors at touch.

11. Mouse Setting



■ Mouse Property

Click [Open] to open the Windows standard mouse property screen.



■ Input Settings

• Double-clickSpeed

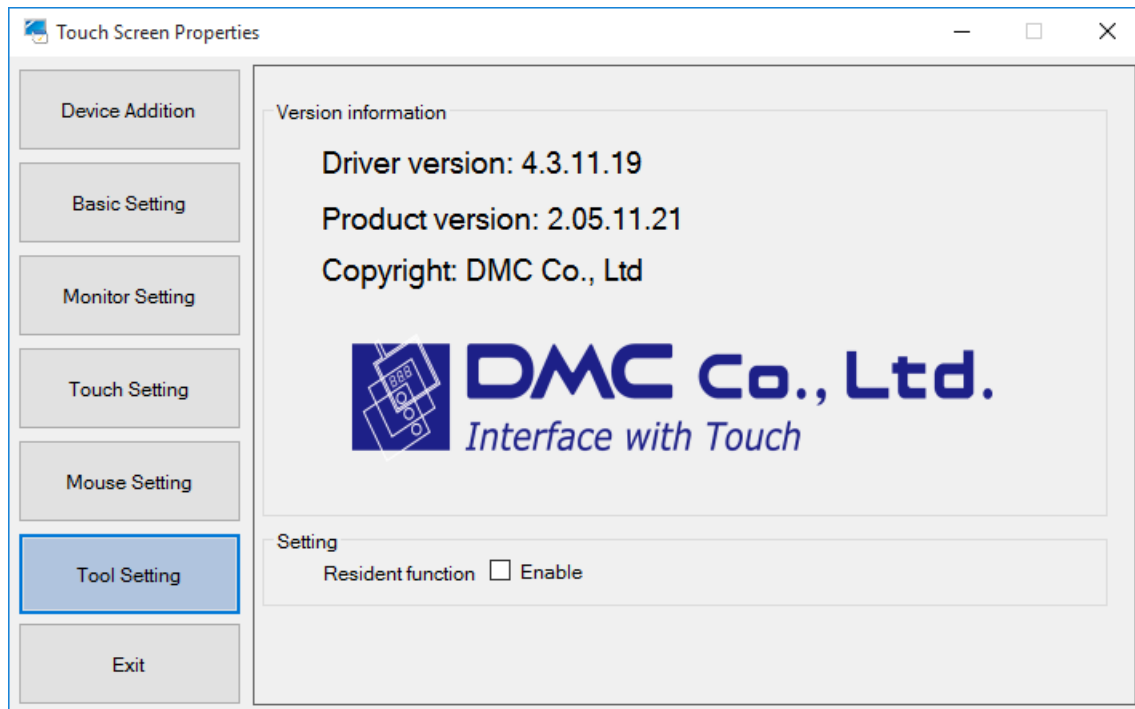
Setting for interval of the time between 2 successive clicks to recognize double-click

• Double-clickArea

Setting for the area to recognize double-click (The area within which 2 successive clicks are recognized as double-click)

12. Tool Setting

Version information and setting will be indicated.



Version information of driver and the setting tool (Touch Screen Properties) can be checked.

■Resident function

Some functions may require registration of resident function.

Configure enable/disable of the resident function in this screen if necessary

■Resident function checkbox

[Checked]

Resident function will be enabled, and the function will be automatically performed at boot-up.

[Unchecked]

Resident function will be disabled.

*The resident function is disabled (unchecked) by default.

Resident function

When resident function is enabled, the following functions can be enabled at each setting screen.

1.Touch Sound

If [Software] or [File] is selected at [Touch Sound] setting, the touch sound configured at the setting will be played at touch.

->For how to configure the touch sound, refer to the section 8-2 [Touch Input Setting] in this manual.

2.Auto Rotation Function

This function is for mouse operation only.

For touch operation, output coordinates will be automatically rotated by Windows. Do not enable this function unless coordinates are not automatically rotated by Windows under an unusual environment.

■Note

If display setting (extend/duplicate) is changed, [Monitor Configuration] at [Device Addition] needs to be performed again. (Refer to the section [9. Monitor Configuration] for details.

DMT-DD v2.05.11.21 User's Guide

December 26, 2018

©2018 DMC Co., Ltd.

This document can be freely distributed, but any alternation to this document is prohibited.

DMC Co., Ltd.

<http://www.dmccoltd.com/english/>

11F Takanaawa Sengakuji Ekimae Building, 2-18-10, Takanaawa, Minato-ku, Tokyo 108-0074, Japan

Phone: +81-3-6721-6736 (English) Fax: +81-3-6721-6732