

DID-SDI Models

Wall Express Control Software

covers version v2.8.1.1

User's Manual

Including Installation

The information given in this document is carefully checked and believed to be reliable. However, Boland takes no responsibility for any failure or product damage caused by the application of this information.

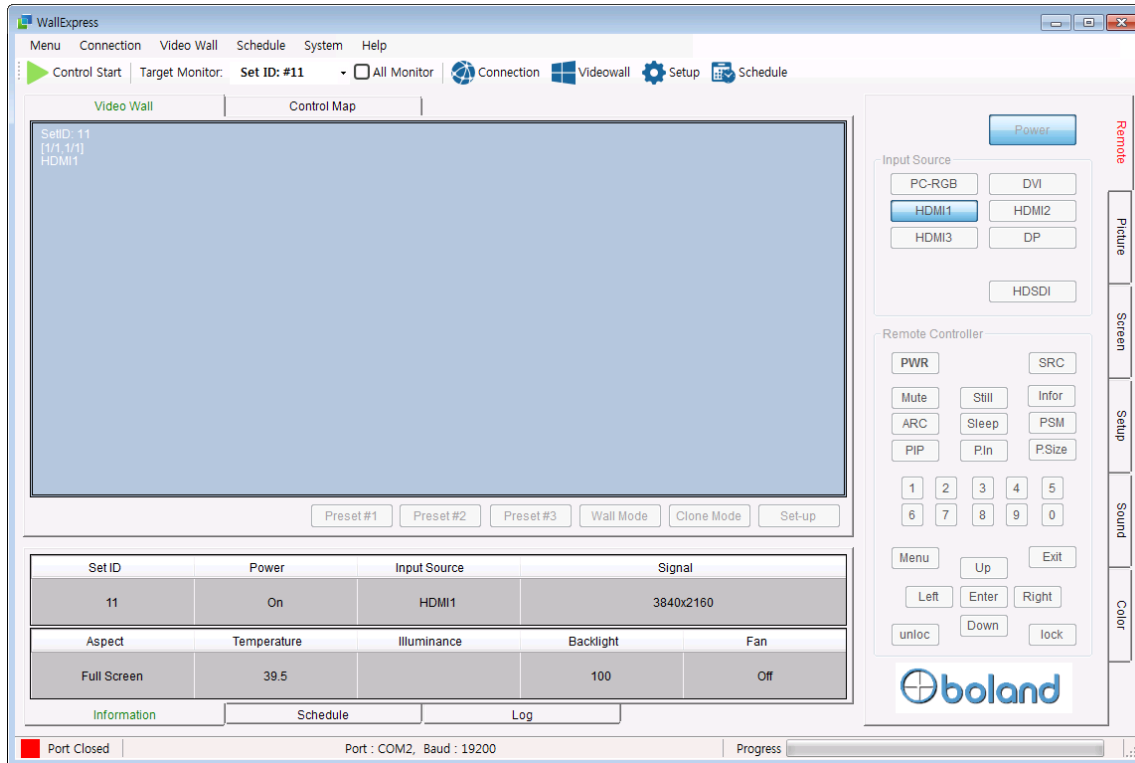
Manual is subject to change without notification.

Contents

Title Page.....	1
1. INTRODUCTION	3
1) FUNCTIONS AND FEATURES	3
2) SOFTWARE SYSTEM REQUIREMENTS	3
3) CAUTION	3
2. INSTALLATION OF WALL EXPRESS.....	4
3. MAIN PAGE OF WALL EXPRESS	5
3-1. MENU BAR	5
1) MENU	5
2) CONNECTION	6
3) VIDEO WALL.....	7
4) SCHEDULE	8
5) SYSTEM.....	9
6) HELP	10
7) RIGHT CLICK CONTROL MAP	10
3-2. MENU BAR 2 - HOT KEY	11
1) CONTROL START.....	11
2) TARGET MONITOR	11
3) ALL MONITOR.....	11
4) CONNECTION	11
5) VIDEO WALL	11
6) SCHEDULE	11
7) SYSTEM.....	11
3-3. CONTROL MAP	12
3-4. STATUS PANES.....	13
1) INFORMATION.....	13
2) SCHEDULE	13
3) LOG.....	13
3-5. MENU BAR 3.....	14
3-6. CONTROL PANES.....	15
EXAMPLE	16

1. Introduction

This PC program is designed to be a user friendly method for controlling a large number of monitors through RS-232C and TCP/IP interfaces



1) Functions and Features

- Create & Edit the monitor System Controller Map.

This is available to save the layout of the System Controller Map as a file format.

- Control a large number of monitors.

By using the Control Panel it is possible to control one or more monitors.

- Status Display

The status of each monitor can be individually displayed.

2) Software System Requirements

- This program only runs on Windows XP sp2 or above.
- and Microsoft .NET framework 4.0 or later.

3) Caution

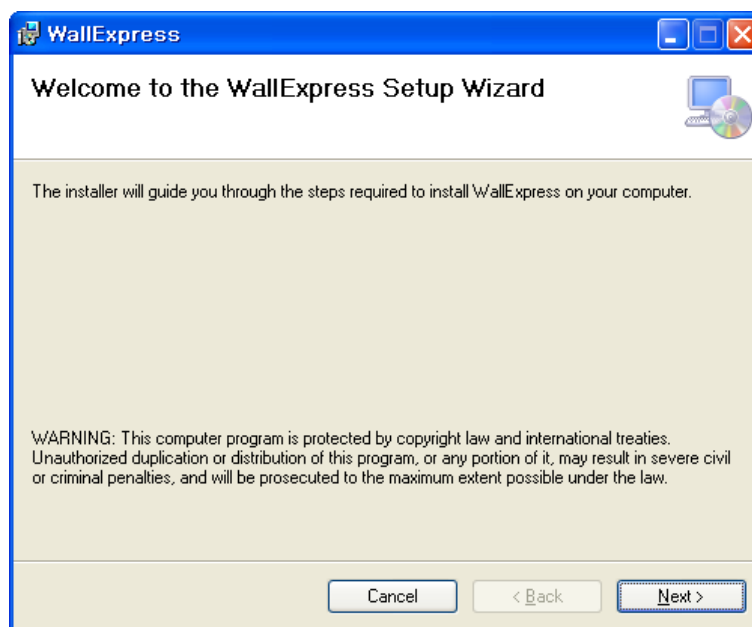
- **Caution:** The Set ID of the program and the Set ID set in the monitor must be the same.

2. Installation of Wall Express Software

- Microsoft .NET Framework v4 must be already installed. (or later)
- Unzip the downloaded WallExpress_v2.8.1.1.zip to a temp directory.

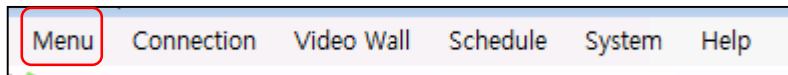
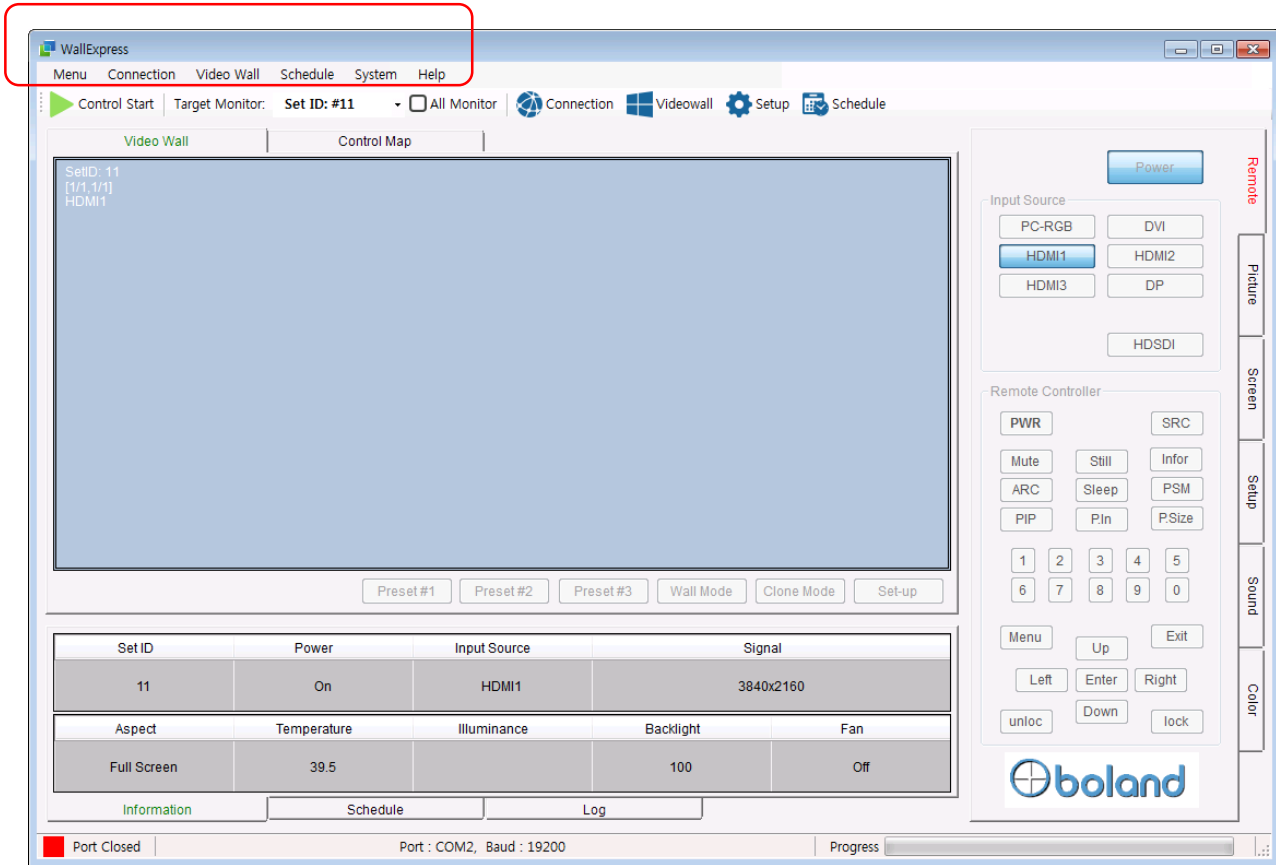


- Double-click on the setup.msi icon.
 - Follow the setup wizard instructions.
 - Setup.msi: Microsoft Installer executable file, uses Setup.exe to install.
-
- To install the program on a PC, select the installer file, and follow the “Wall Express Setup Wizard” instructions.



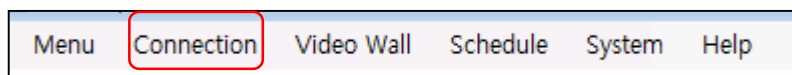
- After installation is completed, a shortcut button will be created on the desktop and in the Start menu.

3. Main Page of Wall Express



1) Menu

- Save: Save the current setting on the program. (User1, User2, User3)
- Load: Default, User1, User2, User3
- Save File: Save the current setup to a file.
VideoWall files (*.vw3)
- Load File: Load the setup of a saved file.
VideoWall files (*.vw3)



2) Connection

- Configuration: To display the serial port and TCP/IP information.
Select the connection method radio button:

Serial Port setting

- Interface: Choose and display the selected connection method. (RS232 or TCP/IP)
- COM Port: Show the connected serial port. (if the RS232 selected it will be enabled)
- Baud rate: Show the serial communication speed. (Must be set to 19200) (if RS232)
- Host IP Address: Show the IP address of the PC where the program is running. (if TCP/IP)
- Target IP Address: Show the IP address of the monitor. (if TCP/IP is selected)
- Search: Searches for the IP address of a connected monitor.

TCP/IP setting

HDMI 1		Resolution : 3840x2160@60Hz
Picture	Network	Enable
Color	Load Network Setting	
Video Wall	DHCP	On
HDR	IP Address	192.168.0.182
Audio	Gateway	192.168.0.1
Heat Control	Subnet	255.255.255.0
Network	Save Current Setting	
Timer		
Other Setting		

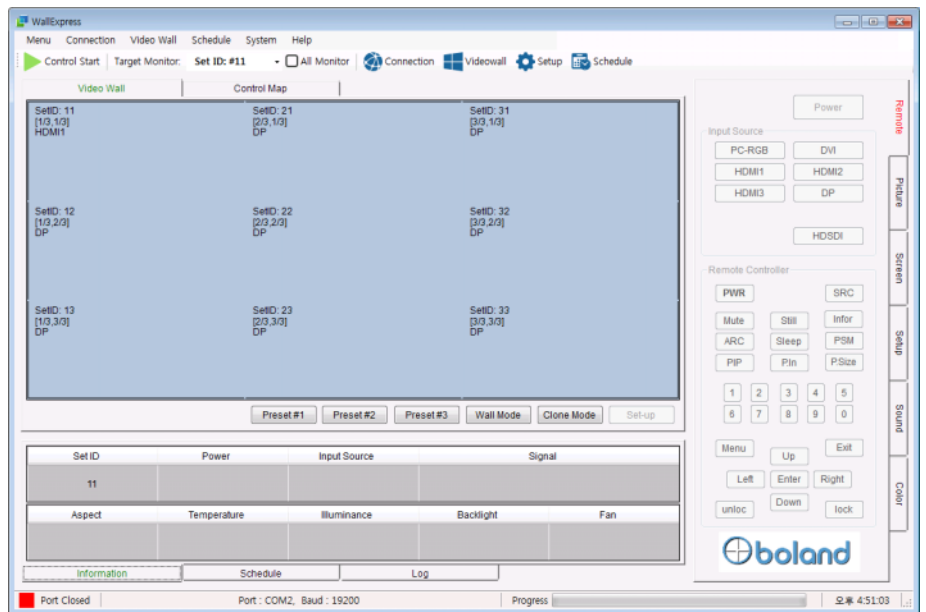
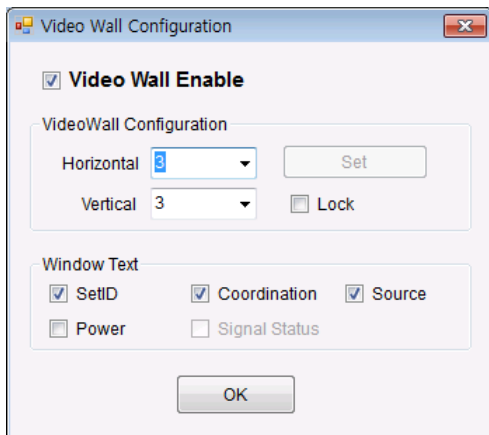
Menu Connection **Video Wall** Schedule System Help

3) Video Wall

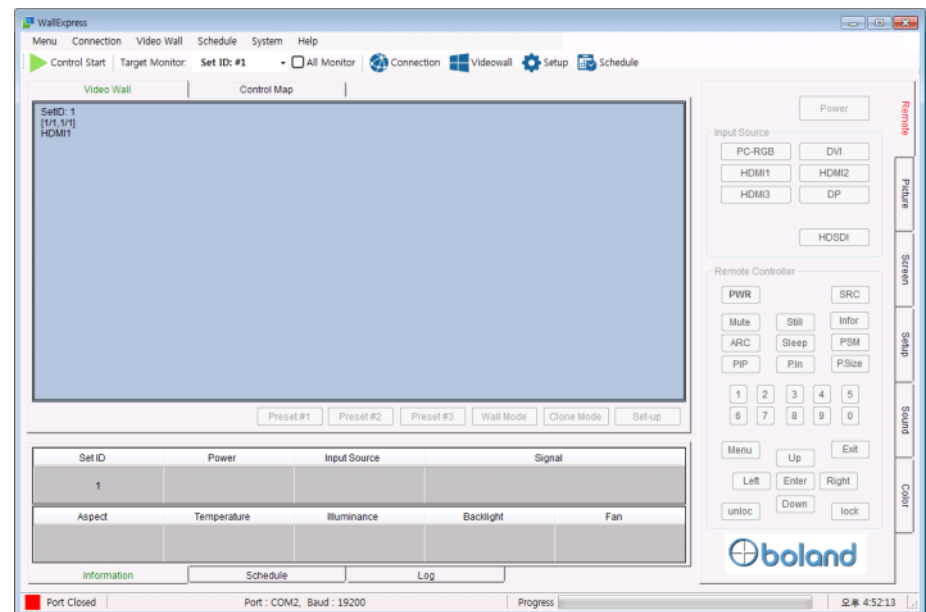
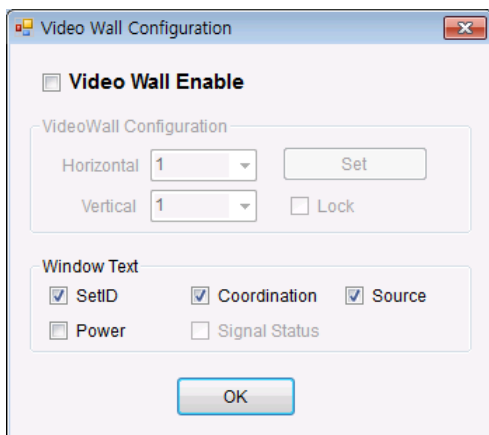
- Configuration: To display configuration of video wall.

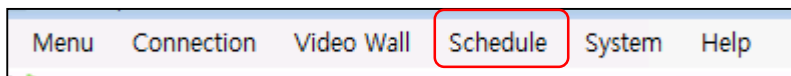
User can select the settings in single mode and multi mode.

- **Caution: The Set ID of the program and the Set ID set in the monitors must be the same.**
- Video Wall Enable Mode



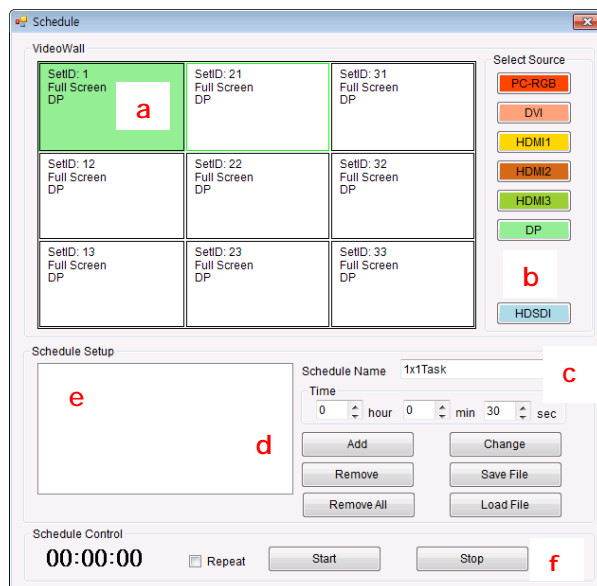
- Single Monitor Mode





4) Schedule

- The user may set the input source and operating time. SET will operate automatically.

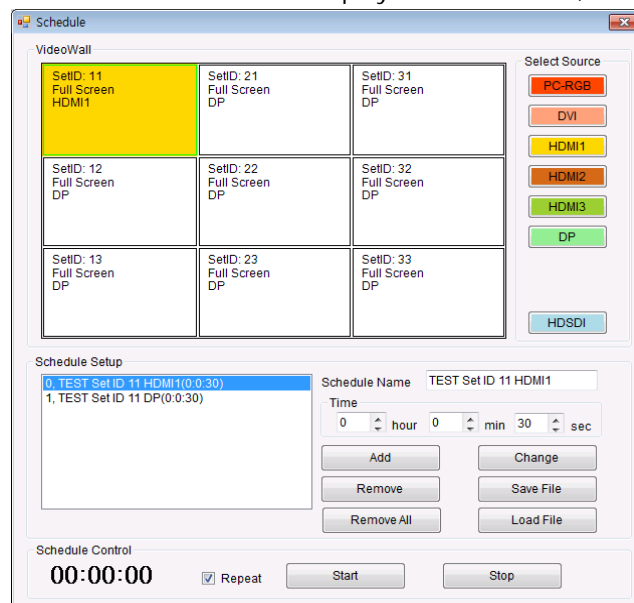


- Select the monitor in the window of video wall.
- Select the input source to drive the monitor.
- Select the time to drive the monitor.
- User can make settings such as adding and removing.
- User can see the set schedule.
- Time display and control buttons display

Example: Set ID 11 - First set HDMI 1 to display for 30 seconds and then DP to display for 30 seconds, Repeat set.

1. Enter the schedule Name - TEST Set ID 11 HDMI1
2. Select monitor for Set ID 11
3. Select source HDMI1.
4. Enter the time to run HDMI1.
5. Click the Add icon to register it in the list.
6. Enter the schedule Name - TEST Set ID 11 DP
7. Select monitor for Set ID 11
8. Select source DP (DisplayPort).
9. Enter the time to run DP.
10. Click the Add icon to register it in the list.
11. Select the repeat item.
12. Click the Start icon.

(The program must be active by clicking control start in the main screen of the program.)



Menu Connection Video Wall Schedule **System** Help

5) System

- Setup: The user can be possible to select the type and specifications of the model.
Model (on the monitor and the program) must be the same.

Model Selection Guide

	Model	Board Type	Board Options
1	DID24-SDI	Linker 2	HD-SDI
2	DID32-SDI		
3	DID49-SDI		
4	DID55U-SDI		
5	DID46SNB-SDI	Linker	HD-SDI
6	DID49SNB-SDI		
7	DID55SNB-SDI		

Setup

Board Type

☐ Minerva ☐ Linker ☒ Linker2 ☐ Lake

Minerva Options

☐ HDMI3

Linker Options

☐ HD-SDI

Linker2 Options

☐ HDMI3 ☐ HDBasedT ☒ HD-SDI

Lake Options

☐ HDMI3 ☐ HD-SDI

Options

☐ Auto Check Status

Auto Checking Period: 5 Sec

OK



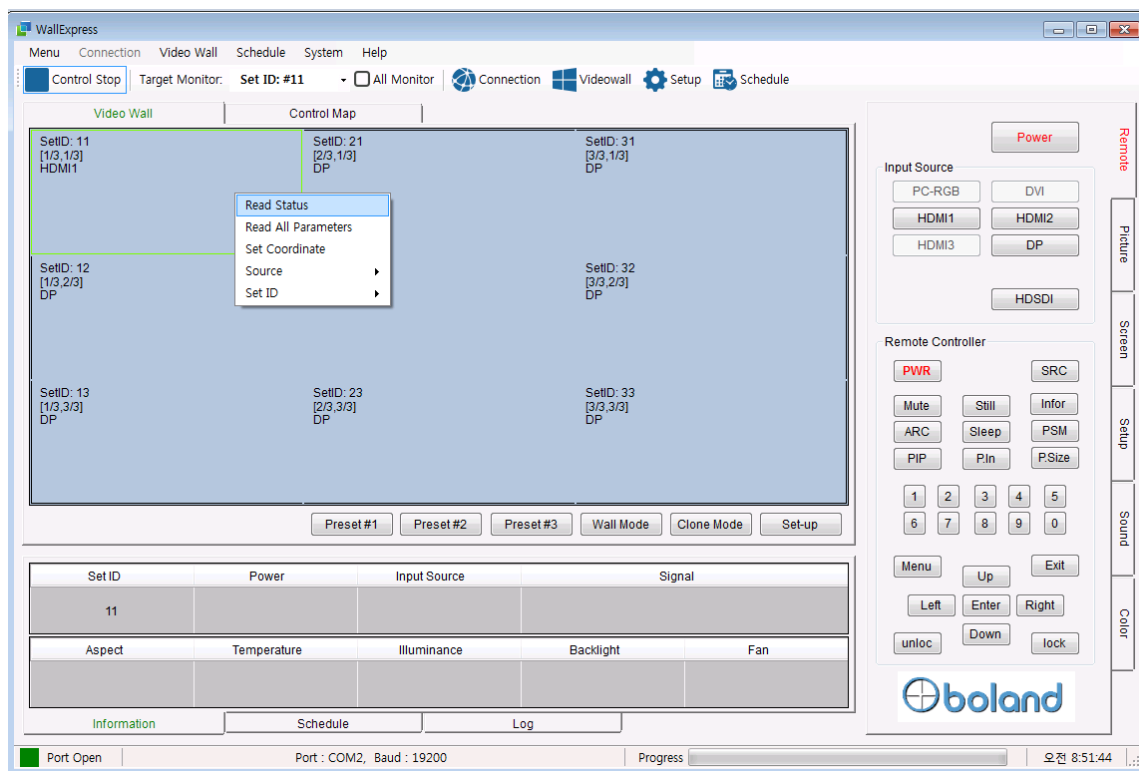
6) Help

- The user can check the information of the program.



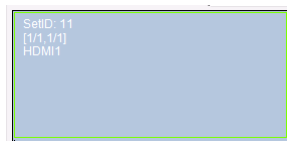
7) Right click Control Map

- Right-click to read information about your monitor or make other simple changes.



MORE >>>

- You can check the configuration of videowall and current input source.



Current source : HDMI 1, [1/1, 1/1]
VideoWall : [1/1, 1/1] ► X max 1, Y max 1, X pos 1, Y pos 1

- You can check the overall condition of the monitor

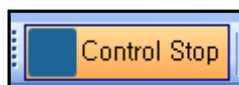
Set ID	Power	Input Source	Signal	
11	On	HDMI1	3840x2160	
Aspect	Temperature	Illuminance	Backlight	Fan
Full Screen	40.0		100	Off



3-2.Menu Bar 2 - HOT KEY

1) Control Start

- After all of the settings, User can start or finish the control.



2) Target Monitor

- Select the SET ID of the controlled monitor.

3) All Monitor

- Use to adjust all of the monitors of the video wall at the same time.

4) Connection

- The same as the Connection item of Menu Bar 1. ([page 6](#))

5) Video wall

- The same as the Video Wall item of Menu Bar 1. ([page 7](#))

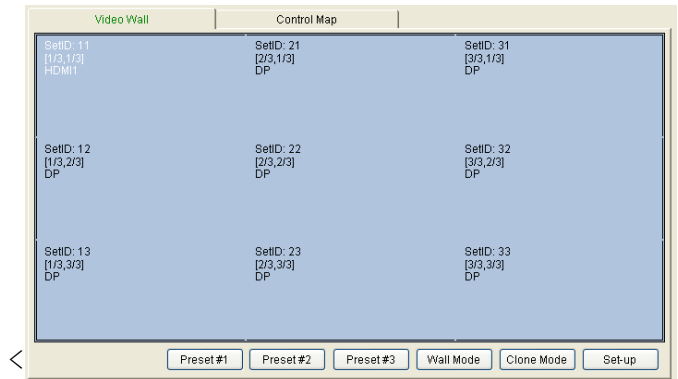
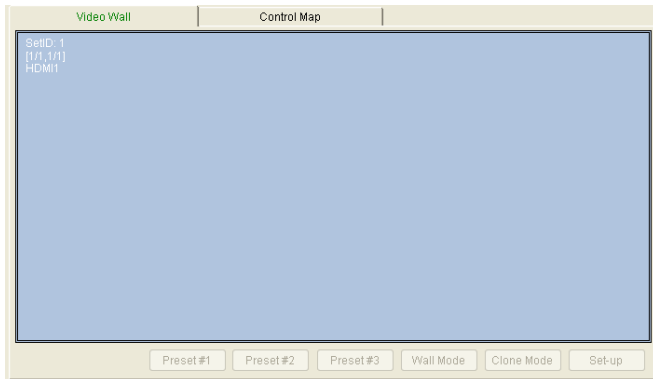
6) Schedule

- The same as the Schedule item of Menu Bar 1. ([Page 8](#))

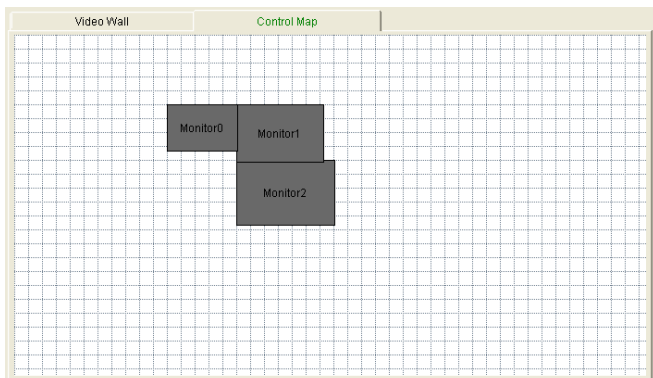
7) System

- The same as the System item of Menu Bar 1. ([Page 9](#))

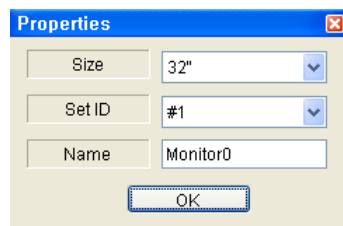
3-3. Control Map



- Video Wall : User can control to the multi set by a simple operation.
 - ➔ This window applied to the video wall setting of the menu items.
 - ➔ Press the right button of the mouse, it can be a simple operation.
(Read Status, Read All Parameters, Set Coordinate, Source, Set ID)



- Control Map : User can edit the control map and control the monitor on this table..
 - ➔ If press the right button of the mouse, you will see popup that you can set.



3-4. Status Panes

1) Information

SetID	Power	Input Source	Signal	
1	On	HDMI1	1920x1080	
Aspect	Temperature	Illuminance	Backlight	Fan
Full Screen	29.5		100	Off

Information Schedule Log

- The user can check the current state of the monitor
→ Press the right button of the mouse in the video wall window, and then select read status.

2) Schedule

0, 3x3Task(0:0:30)
1, 3x3Task(0:0:30)

Schedule Control

00:00:25

☐ Repeat

Information Schedule Log

- The user can check the schedule state of the monitor.
→ Please refer to the schedule function. ([page 7](#))

3) Log

System: Found COM Port [COM1]
System: Found COM Port [COM10]
System: [Port : COM1, Baud : 19200] port opened!
RS232: Get Command(POWER) [02, 0xfe]
RS232: Received Data[F1, 01]
RS232: Get Command(CURRENTSOURCE) [0x02, 0x01]
RS232: Received Data[F1, 02]
RS232: Get Command(SETXMAX) [0x02, 0x44]
RS232: Received Data[F1, 01]

Clear Log

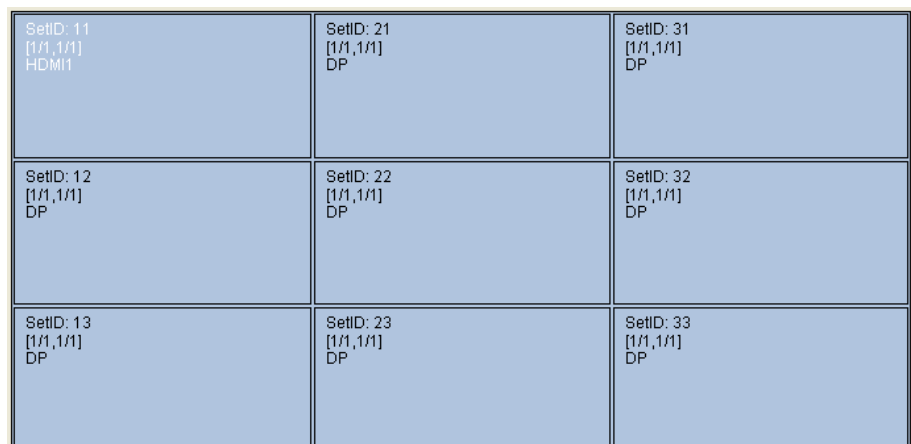
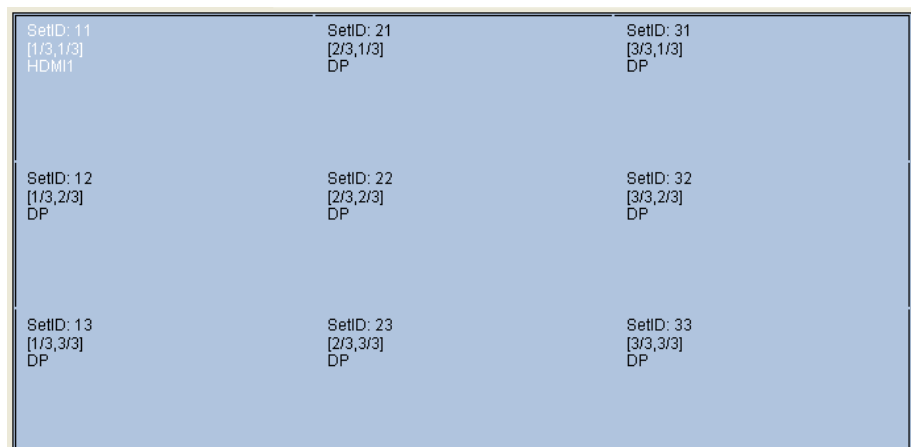
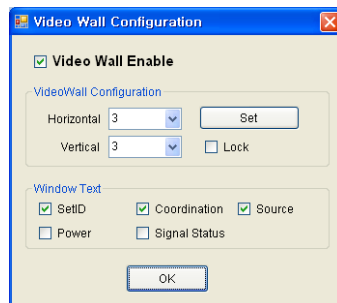
Information Schedule Log

- The user can confirm the record of the execution of the program.

3-5.Menu Bar 3



- Preset: It is used when loading the previously saved setting.
→ Please refer to the Video wall function.
- Wall Mode: Displays the split screen with a pre-configured video wall.
- Clone Mode: Displays all monitors in 1:1 screen.



3-6. Control Panes

- The user easily adjusts these functions:

Remote control

Power

Input Source

VGA DVI

HDMI1 HDMI2

HDMI3 DP

Remote Controller

PWR SRC

Mute Still Infor

ARC Sleep PSM

PIP P.In P.Size

1 2 3 4 5

6 7 8 9 0

Menu Up Exit

Left Enter Right

unloc Down lock

Remote

Picture

Screen

Setup

Sound

Color

Picture

Picture Mode

Mode

Brightness 50

Contrast 50

Color 50

Sharp. 50

Video Picture Mode

Mode

Brightness

Contrast

Color

Sharp.

Color Temperature

Temperature 9300K

PC Temp

Red 200

Green 225

Blue 240

Remote

Picture

Screen

Setup

Sound

Color

Screen

Size Full Screen

PC Auto Adjust

VideoWall

X-Coordinate 1

Y-Coordinate 1

X Max 2

Y Max 2

X Gap 0

Y Gap 0

Dimming

Auto Dimming Off

Dim Level 100

Max Dim Ambient 300 Lux

Min Dim Ambient 100 Lux

Ambient 0 Lux

Remote

Picture

Screen

Setup

Sound

Color

Setup

Set ID #1

Language English

Timer

04:36:24 Set

Time 0 28

On Time 0 0 Off

Off Time 0 0 Off

Lock

Key Lock Off

Remote Lock Off

Power Save Off

Factory Reset

Heat

Fan Control Auto

Fan Active Temp. 50.0 °C

Hysteresis 2.0 °C

Shutdown 85.0 °C

Main 29.5 °C

Aux

Remote

Picture

Screen

Setup

Sound

Color

Sound

Mode

Equalizer

10 kHz

3 kHz

1 kHz

300 Hz

100 Hz

AVC

Balance

Volume 30

Remote

Picture

Screen

Setup

Sound

Color

Color

Color Source 9300K

Factory Color Gain

Red 200

Green 225

Blue 240

Factory Color Offset

Red 0

Green 0

Blue 0

Remote

Picture

Screen

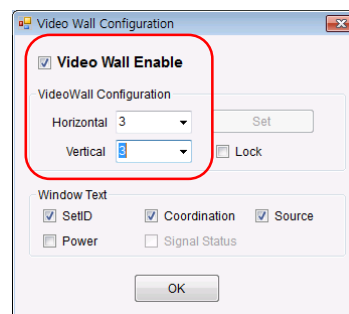
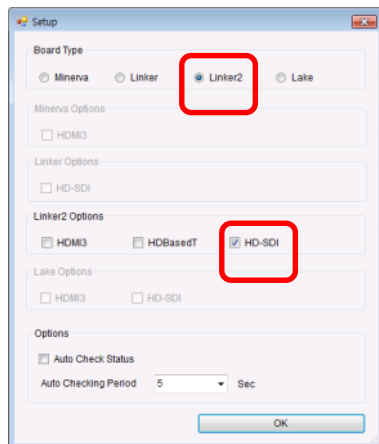
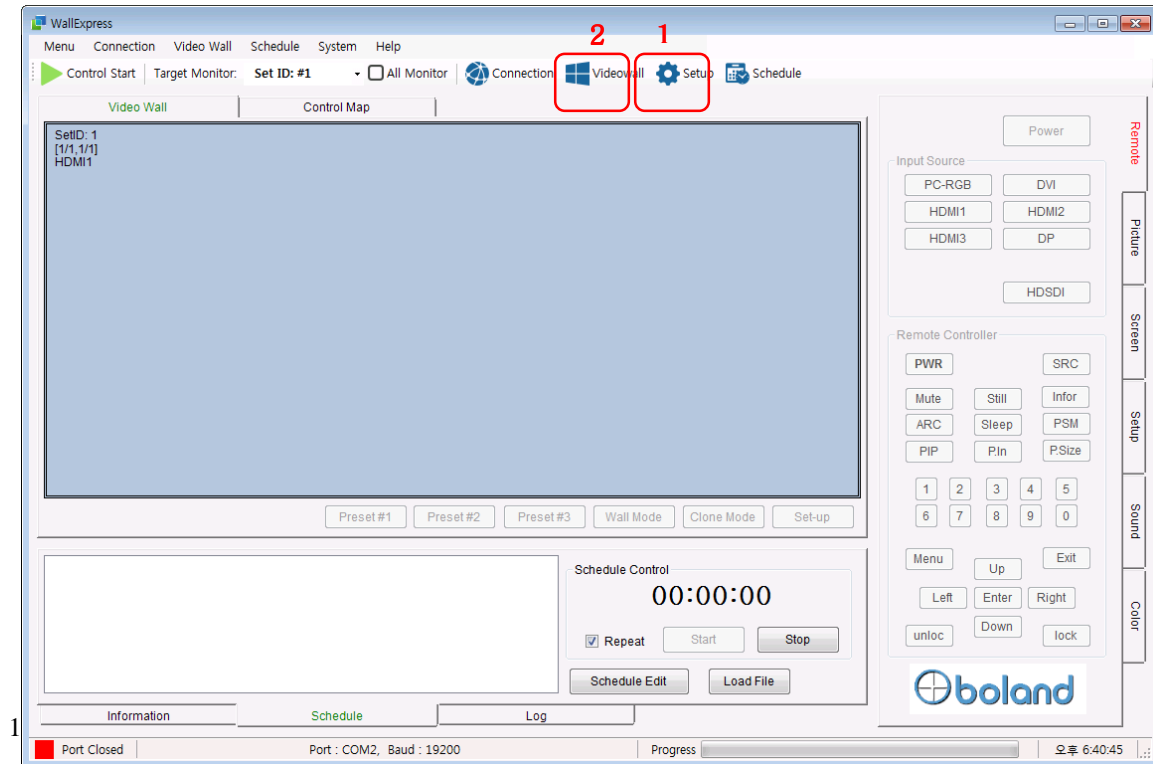
Setup

Sound

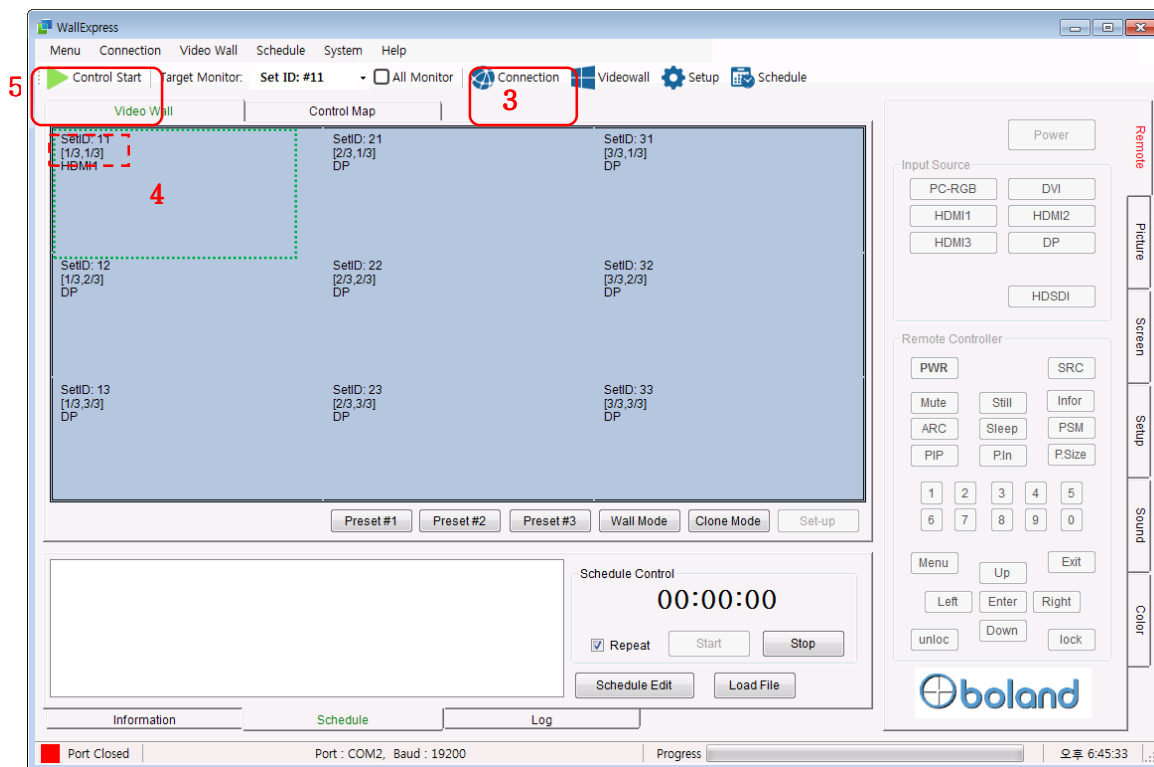
Color

Example

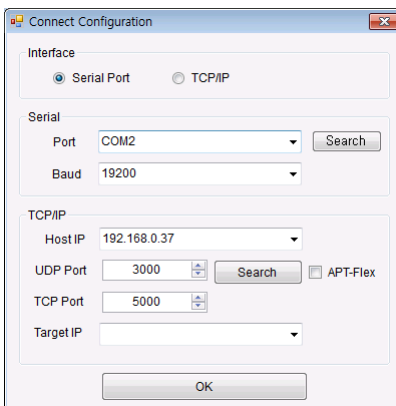
- DID55U-SDI : 3x3 VideoWall Setup



- 1) Setup: Select the model. (Linker 2, SDI)
- 2) Video Wall Configuration: Select the configuration >

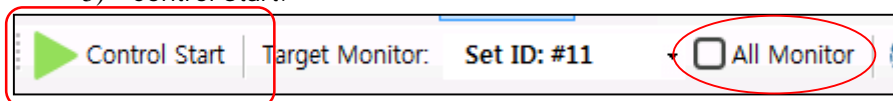


3) Connection: Select the connection type (Serial or TCP/IP).



4) Check SET ID: Check that the Set ID of the monitor to be adjusted and the Set ID on the program match.

5) Control Start.



Tip: To adjust 9 monitors at once in a 3x3 configuration, click the [All monitor] box.
Do not select [All monitor] to adjust only 1 monitor in a 3x3 configuration.

6) Check your connection

Click the right mouse button and select [Read Status] to verify that you receive information from the monitor.