



*High Quality Professional Broadcast Monitors*

# 2023



x4K65HDR5-OLED

x4K55HDR5-OLED

x4K31aHDR5-OLED

x4K27aHDR5-OLED

x4K22HDR3-OLED

x4K16HDR3-OLED

# THE WORLD OF HIGH DYNAMIC RANGE

800-918-9090 | +1-949-465-9911 | [www.bolandcom.com](http://www.bolandcom.com)



*High Quality Professional Broadcast Monitors*

It's all about one single, simple concept: Customer Service.

Forty years ago our organization, starting out as a simple contract broadcast equipment design group, had one vision: to offer the best customer service in the business. We began by manufacturing a number of on screen display products. As our manufacturing volumes grew, so grew our reputation for servicing our customers.

We have always believed that listening to our customer's specific needs was the best way to develop any product. At the 1995 National Association of Broadcasters Show, after significant user feedback, we introduced the first LCD monitor to the broadcast community. It was voted the editor's "Pick of the Show," and has expanded in all directions, focusing on broadcast television and film.

And our single defining element? To this day it is our dedication to customer service. Though we strive to do a lot of things right...improving on old technologies, offering custom display design, crafting specific models and series for specific uses...it's true that all of these things are important, but nothing matters more than taking care of all of our valuable customers.

As you read through our latest offering, we encourage all of you to take note of what you see and like. If you don't see what you need, all you have to do is let us know and we will build it...

We are here for you, just like when we started out some forty years ago. We are here FOR YOU, and welcome all of your feedback, so that you may allow us to serve you for forty more.



**BGM7-4K**  
**Signal Generator**

See page 15



# Table of Contents

4K OLED and LCD with HDR .....	4
1920x1080 with HDR .....	5
Television & Broadcast .....	6
Post Production & Edit .....	7
Mobile Broadcast – O.B. ....	8
Field & Production & On Set .....	9
Camera – Jib – Steadicam .....	10
Teleprompting .....	11
DayBrites .....	12
<i>Ultimate</i> Video Walls .....	13
<i>Ultimate</i> Value SDI Models .....	14
BGM7-4K Signal Generator.....	15
Aviation – Commercial – Military .....	15
7” - 9” Monitors .....	16
10” - 16” Monitors .....	17
17” - 19” Monitors .....	18
20” - 23” Monitors .....	19
24” Monitors .....	20
26” - 31” Monitors .....	21
32” - 42” Monitors .....	22
43” - 49” Monitors .....	23
55” Monitors .....	24
65” - 98” Monitors .....	25
Accessories .....	26
Custom Built Monitors .....	27

# 4K OLED and LCD with HDR

The future is here. And what a beautiful future it is! 4K by Boland is based on clarity, color, and size. Now available in sizes 16", 17", 22", 24", 27", 31", 43", 49", 55", 65", 75" and 98", these models offer Ultra HD resolution of 3840 x 2160 (the 4K31-HDR has a native resolution of 4096 x 2160), and list features like ultra wide viewing angles, multiple digital inputs, upscale conversion of 1080 signal, Gamma Curve and RGB adjust, safe area markers, and multiple color temperatures.

If you need to view your 4K content on a color accurate 4K monitor, with 2020 colorspace, we would be happy to show you a 4K model by Boland.



**LCD Models:**

- 4K17-HDR
- 4K24bHDR
- 4K31HDR-350
- 4K31HDR-1000
- 4K43-HDR
- 4K49-HDR
- 4K55bHDR
- 4K65-HDR
- 4K75-HDR
- 4K98-HDR

**OLED Models:**

- x4K16HDR3-OLED
- x4K22HDR3-OLED
- x4K27aHDR5-OLED
- x4K31aHDR5-OLED
- x4K55HDR5-OLED
- x4K65HDR5-OLED

Specific models shown in the image include:

- x4K65HDR5-OLED
- x4K55HDR5-OLED
- x4K31aHDR5-OLED
- x4K27aHDR5-OLED
- x4K22HDR3-OLED
- x4K16HDR3-OLED

## Commonly Recommended Models



**4K17-HDR**  
See page 18



**x4K31aHDR5-OLED**  
See page 21



**4K55bHDR**  
See page 24



**4K98-HDR**  
See page 25



# 1920x1080 with HDR

An old proverb once suggested “If it ain’t broke, don’t fix it.” We agree with the sage, but perhaps some extra upgrades might come in handy in the ever inventive world of broadcast. Borrowing from our extremely popular 10 bit BVB Series, this latest adaptation known as BHB offers all of the same professional broadcast panels and feature sets as the aforementioned, but gives the operator more flexibility by extending emulated High Dynamic Range and Hybrid Log Gamma curves, and 12G SDI.



BHB55aHDR



BHB24aHDR



BHB12aHDR20



BHBaHDR Ports

## Commonly Recommended Models



**BHB24aHDR**  
See page 20



**BHB42aHDR**  
See page 22



**BHB55aHDR**  
See page 24

# Television & Broadcast

In the world of Broadcast Television, monitors play a critical role. They provide preview for multiple cameras (and program), assist with camera shading, allow the T.D., A.D., Director, and others to frame a shot, and provide multi-viewing control room options for large productions. They can even monitor signal with built-in scopes.

This is all “good stuff,” but professional broadcast monitors by Boland offer even more. Our high quality, hand selected LCD displays are easy on the eyes after 14 hour days; they offer many signal inputs which give peace of mind that any signal can be processed in any situation; and not only do Boland monitors offer 178° of off-axis viewing, but they do so with perfect, calibrated colorimetry.

From CBS in Los Angeles to CNN in New York to ZDF in Germany, broadcasters worldwide count on Boland for reliability, multi-functioned ease of use, and a large range of sizes and options.

## Rack System Monitors



*Late Night Talk Show Control Room*



*Sports Venue Control Room Operations*



BHB07x2-HDR



BHB09x2-HDR

## Commonly Recommended Models



**4K24bHDR**

See page 20



**x4K27aHDR5-OLED**

See page 21



**x4K31aHDR5-OLED**

See page 21

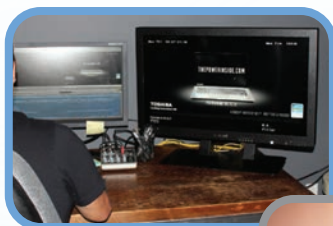


**4K55bHDR**

See page 24

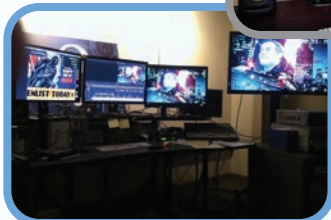
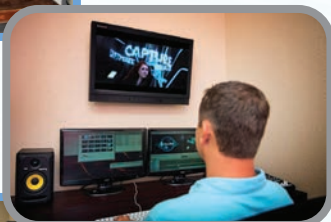


# Post Production & Edit



*Zoic Studios,  
Culver City*

*NewTek Post Facility,  
San Antonio*



*World Poker Tour,  
Los Angeles*



*Team Detroit,  
Detroit*

Color is Critical! These words, more than any other, describe the Boland models suggested for Post Production. Lots of colorists use lots of different sized monitors. They work in diverse color space, on various types of projects, for different entertainment mediums. Their work is varied. It is unique depending on scope. But there is one criteria important to all: Accurate Color.

To be certain that Color is Correct is a universal demand in the post production community, and Boland offers multiple models to ensure this requisite need is met.

From our BHB24aHDR with crisp and conscientious blacks, to our Rec. 709 49" large screen monitors (used to edit critically acclaimed "House of Cards"), to our portable 17" units that feature 10 bit panels and processing and support DCinema and wide gamuts...for all of these critical elements, Boland is a great candidate for your next Post Production, Color Accurate monitor.

Not sure where to start? Check out our BHB24aHDR or BHB17aHDR. They all support 4:4:4 signal and present outstanding quality.

## Commonly Recommended Models



**x4K22HDR-OLED**

See page 19



**x4K27aHDR5-OLED**

See page 21



**x4K31aHDR5-OLED**

See page 21



**4K65bHDR**

See page 25



# Mobile Broadcast – O.B.



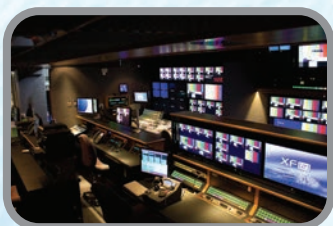
*Encore, Game Creek Video,  
Hudson*



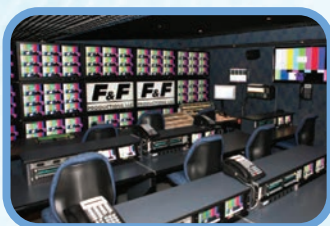
*Double Eagle, NEP,  
Pittsburgh*

Mobile broadcast is tough. There is no rest for the weary, and often times trucks and vans get no rest at all (and neither does the crew for that matter). Being on the road 24/7/365, a mobile broadcaster demands equipment that can endure thousands and thousands of miles. With respect to monitors, Boland is proud to build models for the best of the best.

If you are building a truck, van or flypack, and need monitors for multi-viewing, shading, or as throw-downs, we would be proud to design some tough and dependable monitors for your specific needs. With the most responsive customer service in the industry, and custom models made to order, Boland will keep you rolling down that highway knowing that monitoring will never be a worry when you come to the next stop in the line.



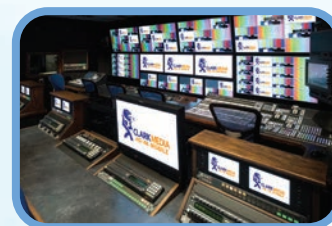
*Sadie,  
Harb Productions,  
Knoxville*



*GTX-17,  
F&F Productions,  
Clearwater*



*Revolution,  
All Mobile Video,  
Bogota*



*Clark Media,  
Bethlehem*

## Commonly Recommended Models



**PVB20\_TE**  
See page 19



**4K24HDR\_TE**  
See page 20



**x4K27aHDR5-OLED**  
See page 21



**PVB32\_TE**  
See page 22

*TE stands for Truck Edition.*



# Field & Production & On Set

The New Standard...it's as simple as that. In the field, on location in the Blue Ridge Mountains, or sequestered on a stage hidden somewhere in Hollywood, when the shoot is going down, you need accurate, dependable, calibrated monitoring to evaluate the shot and understand what the camera already knows. For almost 20 years, Boland has been an innovator for on-set monitoring. Our professional displays offer a whole host of features not found in other so-called "professional" monitors. For example, many of our models feature 10 bit color depth (1.06 billion colors), full scopes packages, 3G SDI + Dual Link, support for 2K resolution and 4:4:4 signal, and tempered scratch-resistant glass.

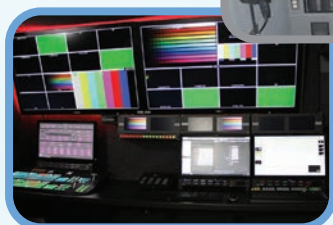
From Paramount, FOX, Universal, and Sony to the World Series, The Grammys, The Oscars, and Spiderman number thirty seven, Boland is proud to build reliable and accurate monitors for production.

Check out our BHB and PVB Series in 17", 24", and 32". All offer 1920x1080 resolution with 2K support, 16 channel audio, and are pre-calibrated at the factory. Or for the discerning eye (and D.I.T cart), perhaps you would be interested in the new 4K31-HDR! With 1000nts and High Dynamic Range... who could ask for more.



*E.N.G.  
Field Van*

*L3 Communications,  
Santa Rosa*



*Fly Pack Rental Unit,  
Glendale*



*Digital Film Studios,  
Burbank*

## Commonly Recommended Models



**BHB16aHDR DayBrite**  
See page 17



**BHB17aHDR**  
See page 18



**4K24bHDR**  
See page 20



**x4K27aHDR5-OLED**  
See page 21



# Camera – Jib – Steadicam



Are you following Pacino with a PRO rig? Tracking the shot around the bend at the Indianapolis 500? Maybe filming from a crane for a company like Google or Yahoo? If any of these situations sound familiar, you probably already know about the Boland models that are perfect for steadicam and camera operators, jib and crane professionals.

Available with 4:3 or 16:9 aspect LCDs (with LED backlights), in regular brite or DayBrite varieties, and in sizes ranging from 7" to 32", these special monitors from Boland offer up to 1500 nits of brightness, extra wide off-axis viewing, adjustable safe area frame markers, and a whole host of other professional features not often found on other broadcast monitors.

All of these models feature HD SDI, HDMI/DVI, and Composite inputs, as well as Rec. 709 color calibration, Gamma and Color Temperature onboard adjustments.



## Commonly Recommended Models



**BVB07-HDR-DayBrite\***

See page 16

**\*Now with Image Flip**



**BVB09-HDR-DayBrite\***

See page 16

**\*Now with Image Flip**



**BHB12aHDR20**

See page 17



**BHB16aHDR-DayBrite**

See page 17



# Teleprompting

Teleprompter rigs must have one critical characteristic: dependability. When talent has been cued and the director calls for action, the teleprompter operator and his / her equipment must be ready to go. And without a reliable prompting monitor, it's anyone's guess whether the script will be ready to roll.

For two decades, Boland has manufactured dependable, high quality teleprompting models with built-in scan reverse, in 4:3 native aspect, in 8", 10", 12", 15", 17", and 19" sizes. DayBrite (1500 nts) or standard brightness...you make the call. Our monitors are used on-set at CNN, for television shows like The View, The Talk, American Idol, and the Bachelor, by multiple international heads-of- state, and by American Presidents.



CNN Studios, D.C.



MBC News Studios, Korea



CNN, NYC

See the brand new  
low cost "TP Series" of  
Teleprompting models.



Available Models:  
TP8DB, TP10DB, TP12DB,  
TP15DB, TP17DB, TP19DB



DayBrite Teleprompter On Location

## Commonly Recommended Models



**TP10 DayBrite**  
See page 17



**TP12 DayBrite**  
See page 17



**TP15 DayBrite**  
See page 17



**TP19 DayBrite**  
See page 19



# DayBrites

You're flying in a chopper in the middle of Vegas, and the camera and the map can't be seen because of the glare.

You're on location in Miami shooting a new crime picture, and the director can't see the action because the monitor itself is 100% clipped by the Florida sunshine.

You're a steadicam operator, and your movie star keeps disappearing from your follow monitor because it's so bright outside.

Sound familiar? We can help. The leading DayBrite monitors in the industry are made by Boland, and we are proud that our DayBrites are used with great satisfaction by folks like steadicam operators Mike McGowan and Brant Fagan, law enforcement agencies like Houston and Phoenix Police Departments, and even multiple Presidents of the United States (reading from the White House Rose Garden).



*Mountain Coast Productions, Denver*



*Exterior Episodic,  
New Orleans*

Our DayBrites are available in a 4:3 aspect, in sizes 8", 10", 12", 15", 17" and 19". They are also available in a 16:9 aspect, in sizes 7", 9", 12", 16", 20", 24", and 32". And all come with just about any signal input and monitor feature you may need.

Not sure exactly which monitor is the best for your use? Please call us any time...we are happy to help...

**WOW**

*See the low cost "TP Series" of DayBrite models*

## Commonly Recommended Models



**BVB07-HDR-DayBrite**  
See page 16



**BVB09-HDR-DayBrite**  
See page 16



**BHB16aHDR-DayBrite**  
See page 17



**BHB24aHDR-DayBrite**  
See page 19



# Ultimate Video Walls

*Large spaces to fill, but a limited video wall budget? We are here to help.*

Dazzle your audience with *Ultimate* Video Walls from Boland. Available multiple in custom configurations, or in standardized pre-determined set-ups, these 49" and 55" units feature **the slimmest bezels** in the industry, providing a seamless video presentation for either indoor or high ambient light conditions.

3G SDI is now a standard input, and sizes are available from 24" to 98".



## Ultimate Series of Standard Video Walls (includes all accessories)

	LCD Size	Model #
Video Wall 2x2	46" LCD's	DID46SNB-2X2
Video Wall 3x3	46" LCD's	DID46SNB-3X3
Video Wall 2x2	49" LCD's	DID49SNB-2X2
Video Wall 3x3	49" LCD's	DID49SNB-3X3
Video Wall 2x2	55" LCD's	DID55SNB-2X2
Video Wall 3x3	55" LCD's	DID55SNB-3X3
Video Wall Mounts - Adjustable In/Out	for all sizes	Option VWM
Ultimate 'Individual Video Wall Tiles	55"	DID55SNB-M
Ultimate 'Individual Video Wall Tiles	49"	DID49SNB-M
Ultimate 'Individual Video Wall Tiles	46"	DID46SNB-M

# Ultimate Value SDI Models

From our Ultimate Series of monitors, these models come in a wide variety of sizes and are very easy to operate. Popular in museums, arenas, shopping malls, corporate facilities and boardrooms, the Ultimate Series are a fantastic value conscious alternative to help engage an audience. Each monitor features 3G SDI signal input, and additionally can display 4K video via an HDMI 2.0 port. Because buttons are loaded on the rear of the chassis, these units provide a reduced bezel cabinet size, perfect for those installations where real estate is a premium!



**VALUE**

DID75-SDI



**VALUE**

DID49-SDI



**VALUE**

DID32-SDI

Available Models:

DID24-SDI  
DID27-SDI  
DID32-SDI  
DID43-SDI  
DID49-SDI  
DID55-SDI  
DID75-SDI  
DID98-SDI



DID-SDI Ports



# Signal Generator



BGM7-4K

Boland Generator Monitor is a combo for end-end circuit testing. Perfect for truck bays, transmission rooms, and workbenches.

- Quick-release in a 3 RU 1/2 rackmount and DC (12v) powered, it goes from fixed to portable instantly.
- Both Generator output and brite calibrated Monitor section input support all formats of SDI: SD/HD/UHD/4K from 480i60 up to (4096) 2160p60, including 23/24/25/29/59/60 frame rates. Single & Quad links via BNC and SFP are supported.
- Extended features include TCP/IP control, patterns and Media Player, 16 channel audio, WFM/Vec/16 Bar Graph display, markers, TC, hex view displays. With Genlock input.

## Aviation – Commercial – Military

Boland Monitors are a perfect fit for airborne applications. Lightweight, with protected screens, Boland commercial-grade units offer flexible input configurations, wide power latitude, and support for all global video formats. Touch screens and LED back lights are available for NVG - compatible applications. Available in sizes 24" to 98."



### Commonly Recommended Models



**BHB12aHDR20-DayBrite**

See page 17



**BHB16aHDR-DayBrite**

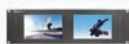
See page 17



**TP19 DayBrite**

See page 19

# 7" - 9" Monitors



	BL7SDI x2	BVB07-HDR DayBrite	BVB07x2-HDR DayBrite	TP08DB DayBrite	BVB09-HDR DayBrite	BVB09x2-HDR DayBrite
16:9 Native	X	X	X		X	X
4:3 Native				X		
Daylight Viewable		X	X	X	X	X
4k Resolution						
12G SDI						
3G SDI	X	X	X	X	X	X
QUAD Link SDI						
HDMI/DVI	X	X	X	X	X	X
Analog Inputs	X	X	X	X	X	X
Markers	X	X	X		X	X
Focus Assist	X	X	X		X	X
False Color	X	X	X		X	X
Waveform & Vectorscope	X	X	X		X	X
Selectable Aspect Ratios		X	X	X	X	X
Audio Meters		X	X		X	X
Audio De-embed		X	X		X	X
HDR 2084 & HLG						
2020 Color Space						
Rec 709 / D65		X	X		X	X
DCinema-P3						
3D LUT						
Gamma Correct		X	X		X	X
4:4:4						
10 bit LCD						
Scan Reverse - Image Flip		X	X	X	X	X
UMD / IMD						
SFP Socket						
Truck Edition- Plain Front Bezel				X		
Ultra Thin Bezel						
Battery Mount & Power Adaptors Available		X	X	X	X	X
Rack Mount Available	X	X	X	X	X	X
Stand Available		X	X	X	X	X
Value Model / Low Cost	X			X		



# 10" - 16" Monitors



BL10-SDI	TP10DB DayBrite	BHB12aHDR20 DayBrite	TP12DB DayBrite	PVB15	TP15DB DayBrite	BHB16aHDR12 DayBrite	x4K16HDR3- OLED
X		x		X		x	X
	X		X		X		
	X	x	X		X	x	
							X
							X
X	X	x	X	X	X	x	X
							X
X	X	x	X	X	X	x	X
X	X	x	X	X	X	x	
		x		X		x	X
		x		X		x	X
		x		X		x	X
		x		X		x	X
X	X	x	X	X	X	x	X
		x		X		x	X
		x		X		x	X
		x				x	X
							X
		x		X		x	X
		x				x	X
		x				x	X
		x		X		x	X
							X
							X
	X		X		X		
		x		X		x	X
		x				x	X
	X						
X	X	x	X	X	X	x	X
X	X	x	X	X	X	x	X
X	X	x	X	X	X	x	X
X	X		X		X		

# 17" - 19" Monitors



	4K17bHDR	BHB17aHDR	LVB17	LVB17-G COVERGLASS	PVB17	TP17DB DayBrite	TP19DB DayBrite
16:9 Native	X	X	X	X	X		
4:3 Native						X	X
Daylight Viewable						X	X
4k Resolution	X						
12G SDI	X						
3G SDI	X	X	X	X	X	X	X
QUAD Link SDI	X						
HDMI/DVI	X	X	X	X	X	X	X
Analog Inputs		X	X	X	X	X	X
Markers	X	X	X	X	X		
Focus Assist	X	X			X		
False Color	X	X			X		
Waveform & Vectorscope	X	X			X		
Selectable Aspect Ratios	X	X	X	X	X	X	X
Audio Meters	X	X			X		
Audio De-embed	X	X			X		
HDR 2084 & HLG	X	X					
2020 Color Space	X						
Rec 709 / D65	X	X	X	X	X		
DCinema-P3	X	X					
3D LUT	X	X					
Gamma Correct	X	X	X	X	X		
4:4:4	X	X		X	X		
10 bit LCD	X	X					
Scan Reverse - Image Flip		X				X	X
UMD / IMD	X	X	X	X	X		
SFP Socket	X						
Truck Edition- Plain Front Bezel						X	X
Ultra Thin Bezel							
Battery Mount & Power Adaptors Available	X	X	X	X	X	X	X
Rack Mount Available	X	X	X	X	X	X	X
Stand Available	X	X	X	X	X	X	X
Value Model / Low Cost			X	X	X	X	X



# 20" - 23" Monitors



BHB20aHDR DayBrite	PVB20	PVB20_TE	x4K22HDR3-OLED	LVB21	LVB23
X	X	X	X	X	X
X					
			X		
			X		
X	X	X	X	X	X
			X		
X	X	X	X	X	X
X	X	X		X	X
X	X	X	X	X	X
X	X	X	X		
X	X	X	X		
X	X	X	X		
X	X	X	X	X	X
X	X	X	X		
X	X	X	X		
X			X		
			X		
X	X	X	X	X	X
X	X	X	X		
X			X		
X	X	X	X	X	X
X	X	X	X		
			X		
X	X	X	X	X	X
X			X		
X	X	X	X	X	X
X	X	X	X	X	X
X	X	X	X	X	X
				X	X

# 24" Monitors



	BHB24aHDR DayBrite	4K24bHDR	BHB24aHDR	DID24-SDI	PVB24	PVB24_TE
16:9 Native	X	X	X	X	X	X
4:3 Native						
Daylight Viewable	X					
4k Resolution		X				
12G SDI		X				
3G SDI	X	X	X	X	X	X
QUAD Link SDI		X				
HDMI/DVI	X	X	X	X	X	X
Analog Inputs	X		X		X	X
Markers	X	X	X		X	X
Focus Assist	X	X	X		X	X
False Color	X	X	X		X	X
Waveform & Vectorscope	X	X	X		X	X
Selectable Aspect Ratios	X	X	X		X	X
Audio Meters	X	X	X		X	X
Audio De-embed	X	X	X		X	X
HDR 2084 & HLG	X	X	X			
2020 Color Space		X				
Rec 709 / D65	X	X	X	X	X	X
DCinema-P3	X	X	X		X	X
3D LUT	X	X	X			
Gamma Correct	X	X	X		X	X
4:4:4	X	X	X		X	X
10 bit LCD	X	X	X			
Scan Reverse - Image Flip						
UMD / IMD	X	X	X		X	X
SFP Socket	X	X	X			
Truck Edition- Plain Front Bezel						
Ultra Thin Bezel						
Battery Mount & Power Adaptors Available	X	X	X		X	X
Rack Mount Available	X	X	X		X	X
Stand Available	X	X	X		X	X
Value Model / Low Cost				X		



## 26" - 31" Monitors



## 26" - 31" Monitors

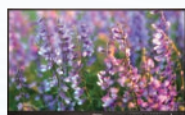
# 32" - 42" Monitors



	BHB32aHDR	DID32-SDI	PVB32	PVB32_TE	BHB42aHDR
16:9 Native	X	X	X	X	X
4:3 Native					
Daylight Viewable					
4k Resolution					
12G SDI					
3G SDI	X	X	X	X	X
QUAD Link SDI					
HDMI/DVI	X	X	X	X	X
Analog Inputs	X		X	X	X
Markers	X		X	X	X
Focus Assist	X		X	X	X
False Color	X		X	X	X
Waveform & Vectorscope	X		X	X	X
Selectable Aspect Ratios	X		X	X	X
Audio Meters	X		X	X	X
Audio De-embed	X		X	X	X
HDR 2084 & HLG	X				X
2020 Color Space					
Rec 709 / D65	X	X	X	X	X
DCinema-P3	X		X	X	X
3D LUT	X				X
Gamma Correct	X		X	X	X
4:4:4	X		X	X	X
10 bit LCD					X
Scan Reverse - Image Flip					
UMD / IMD	X		X	X	X
SFP Socket	X				X
Truck Edition- Plain Front Bezel				X	
Ultra Thin Bezel					
Battery Mount & Power Adaptors Available	X		X	X	X
Rack Mount Available	X		X	X	X
Stand Available	X		X	X	X
Value Model / Low Cost		X			



# 43" - 49" Monitors



4K43bHDR	DID43-SDI	DID46SNB	4K49bHDR	BHB49aHDR	DID49-SDI	DID49SNB
X	X	X	X	X	X	X
X			X			
X			X			
X	X	OPTIONAL	X	X	X	OPTIONAL
X			X			
X	X	X	X	X	X	X
				X		
X			X	X		
X			X	X		
X			X	X		
X			X	X		
X			X	X		
X			X	X		
X			X	X		
X			X	X		
X			X	X		
X			X	X		
X	X	X	X	X	X	X
X			X	X		
X			X	X		
X			X	X		
X			X	X		
X			X	X		
X			X	X		
X			X	X		
X			X	X		
		X				X
X			X	X		
X			X	X		
X			X	X		
	X				X	

# 55" Monitors



	4K55bHDR	BHB55aHDR	DID55-SDI	DID55SNB	x4K55HDR5-OLED
16:9 Native	X	X	X	X	X
4:3 Native					
Daylight Viewable					
4k Resolution	X				X
12G SDI	X				X
3G SDI	X	X	X	OPTIONAL	X
QUAD Link SDI	X				X
HDMI/DVI	X	X	X	X	X
Analog Inputs		X			
Markers	X	X			X
Focus Assist	X	X			X
False Color	X	X			X
Waveform & Vectorscope	X	X			X
Selectable Aspect Ratios	X	X			X
Audio Meters	X	X			X
Audio De-embed	X	X			X
HDR 2084 & HLG	X	X			X
2020 Color Space	X				X
Rec 709 /D65	X	X	X	X	X
DCinema-P3	X	X			X
3D LUT	X	X			X
Gamma Correct	X	X			X
4:4:4	X	X			X
10 bit LCD	X	X			X
Scan Reverse - Image Flip					
UMD / IMD	X	X			X
SFP Socket	X	X			X
Truck Edition- Plain Front Bezel					
Ultra Thin Bezel				X	
Battery Mount & Power Adaptors Available	X	X			X
Rack Mount Available	X	X			X
Stand Available	X	X			X
Value Model / Low Cost			X		



# 65" - 98" Monitors



x4K65HDR5-OLED	4K65bHDR	4K75bHDR	DID75-SDI	4K98bHDR	DID98-SDI
X	X	X	X	X	X
X	X	X		X	
X	X	X		X	
X	X	X	X	X	X
X	X	X		X	
X	X	X	X	X	X
X	X	X		X	
X	X	X		X	
X	X	X		X	
X	X	X		X	
X	X	X		X	
X	X	X		X	
X	X	X		X	
X	X	X		X	
X	X	X		X	
X	X	X	X	X	X
X	X	X		X	
X	X	X		X	
X	X	X		X	
X	X	X		X	
X	X	X		X	
X	X	X		X	
X	X	X		X	
X	X	X		X	
X	X	X		X	
X	X	X		X	
			X		X

# Accessories



**B6M4K Signal Generator**

**New**



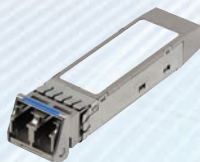
**6" Panavise 1/4-20 Mount**



**Desk Top Stands up to 65"**



**IR Remote Control**



**SFP Modules**



**P-Tap to Mini XLR Power Cable**



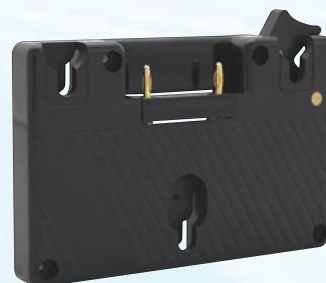
**Power Supplies (various sizes)**



**Yoke Mount**



**Director Handles**



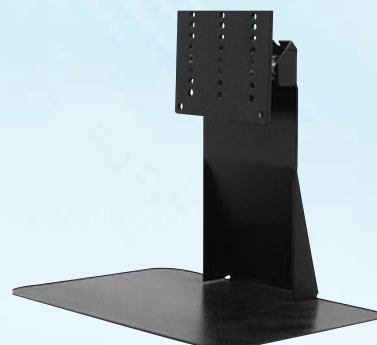
**Anton Bauer Plate  
(V Mount also available)**



**Rack Mount Plates and Frame**



**Stationary Stand Under 55"**



**Tilting Stand Under 20"**



# Custom Built Monitors

## Your needs. Your Specifications.

Built in America, Boland is proud to have served many of our nation's finest museums, government facilities, corporate headquarters, and other unique audio-video installations. Whatever the specifications call for, Boland will deliver exacting standards. Custom color, size, or extra-special technical request? No problem.

### Available Options

- "Truck Edition" Reduced Height Cabinet (Plain bezel front, buttons on rear)
- Custom Color Bezels
- NVG / Night Vision Compatible LCDs
- Touchscreens up to 72"
- Fiber / SFP signal input
- Standard and DayBrite
- 12 & 28 Volt Power (9-36v)
- Various input configurations



We use only high quality components...and it shows. Some of our past custom creations are now featured in the 911 Memorial, The Smithsonian, The Museum of Natural History in NYC, Moscone Center, Bank of America, The Pentagon, Disney, and on The Wheel of Fortune.



**Call Today!**  
**(800) 918-9090**





 **is dependable, delivers quality, built with new technology, so reach for excellence.**

**Broadcast and Film Production  
/ Post-Production:**

ABC  
All Mobile Video  
AOL  
CTV Bell Media  
CBC Toronto  
CBS  
Chainsaw  
CNN  
ESPN  
F&F Productions  
FedEX Field  
Fotokem  
Fox  
Frontline Communications  
GameCreek Video  
Global News  
Harb Productions  
Mastercut  
Mid America Jib  
Mirror Image  
MSNBC  
MTV/CMT  
NBA

NBC  
NEP Supershooters  
Paramount Studios  
Pepsi Center  
PSSI Global  
Rogers TV  
Sweetwater Digital  
Sony Pictures  
Televisa  
Television New Zealand  
Touring Video  
Turner Broadcast  
Universal Studios  
Univision  
Warner Brothers  
Zoic Studios  
ZDF

**Aviation/Vehicle:**

Aero Computers  
Aero Services  
Airborne Energy Solutions  
Boeing  
Bombardier  
Calif Hwy Patrol  
Churchill/Sure Shot

Flir Systems  
Rosenbauer  
Houston PD  
Las Vegas PD  
Mesa PD  
OC Sheriff  
NASA  
New South Wales PD  
Norwegian Special Forces  
Phoenix PD  
Raytheon  
Riverside PD  
Rockwell Collins  
SafetyVision  
US Army  
US Air Force

**Films/Television Programs:**

American Idol  
The Voice  
House of Cards  
Dr. Phil  
Superbowl  
Academy Awards  
Grammy's  
Spiderman

The Muppets  
After Earth  
Fast and the Furious  
Phil Spector  
Rose Bowl  
NCAA Final Four  
The Tonight Show  
The Talk  
The View  
Kimmel Live

**Custom:**

American Museum Natural History  
Bank of America  
Disney  
General Electric  
Guggenheim  
Los Alamos  
Moscone Center  
Pentagon  
Social Security Administration  
Smithsonian  
Wheel of Fortune  
911 Memorial

  
*High Quality Professional Broadcast Monitors*



(800) 918-9090 • [www.bolandcom.com](http://www.bolandcom.com) • [sales@bolandcom.com](mailto:sales@bolandcom.com)

Use your barcode scanner  
application to view our website  
[www.bolandcom.com](http://www.bolandcom.com)

